


LOC I-MWD <b>110.7</b>	APP CRS <b>224°</b>	Rwy Idg TDZE Apt Elev	<b>8001</b> <b>559</b> <b>559</b>
---------------------------	------------------------	-----------------------------	---

# ILS or LOC RWY 22

FREDERICK DOUGLASS/GREATER ROCHESTER INTL (ROC)

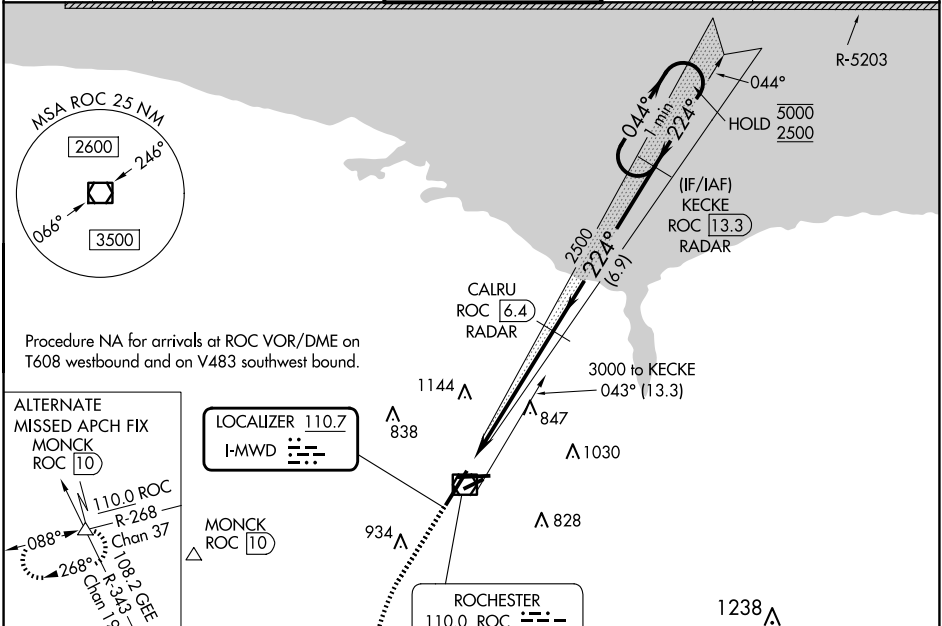
DME or RADAR required.

**▼** When R-5203 active hold in lieu NA. DME from ROC VOR/DME.  
**▲** DME use requires simultaneous reception of I-MWD and ROC DME.  
 \* RVR 1800 authorized with use of FD or AP or HUD to DA.

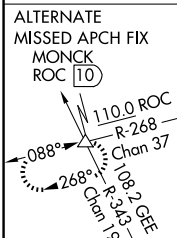
MALSR 

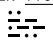
MISSED APPROACH: Climb to 1000 then climbing left turn to 4000 direct GEE VOR/DME and hold.

ATIS <b>124.825</b>	ROCHESTER APP CON <b>119.55 269.6</b>	ROCHESTER TOWER <b>118.3 254.3</b>	GND CON <b>121.7</b>	CLNC DEL <b>118.8 343.65</b>
------------------------	--	---------------------------------------	-------------------------	---------------------------------



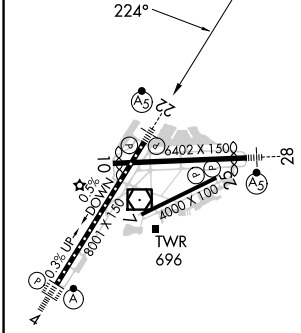
Procedure NA for arrivals at ROC VOR/DME on T608 westbound and on V483 southwest bound.



**LOCALIZER 110.7**  
I-MWD 

**MONCK ROC 10**

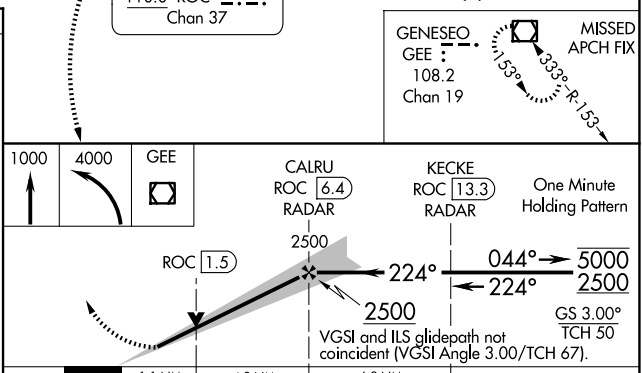
ELEV 559	<b>D</b>	TDZE 559
----------	----------	----------



TDZ/CL Rwy 4  
REIL Rws 7, 10 and 25  
MIRL Rwy 7-25  
HIRL Rws 4-22 and 10-25

FAF to MAP 5.9 NM

Knots	60	90	120	150	180
Min:Sec	5:54	3:56	2:57	2:22	1:58



CATEGORY	A	B	C	D
S-ILS 22 *	759/24 200 (200-1/2)			
S-LOC 22	980/24	421 (500-1/2)	980/40	421 (500-3/4)
CIRCLING	1060-1	501 (600-1)	1460-2 3/4 901 (1000-2 3/4)	1460-3 901 (1000-3)

NE-2, 20 MAR 2025 to 17 APR 2025

NE-2, 20 MAR 2025 to 17 APR 2025