

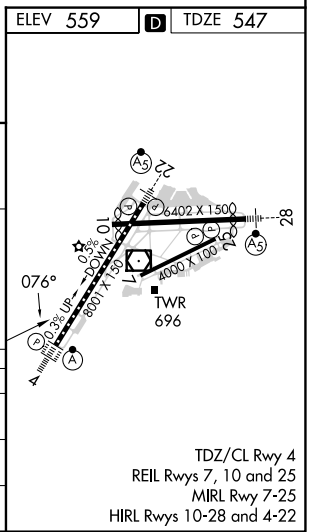
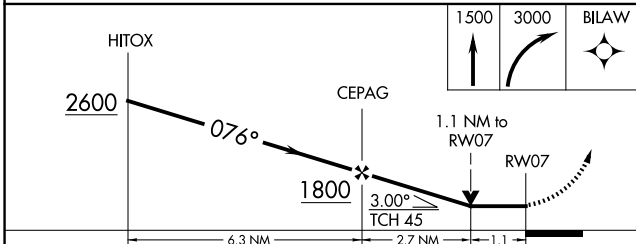
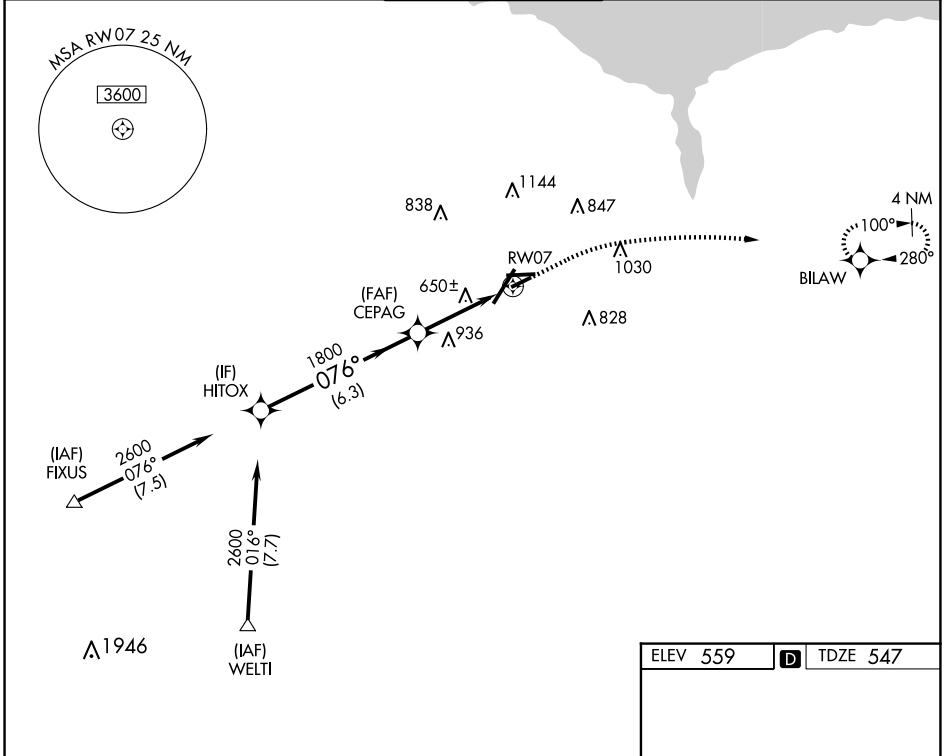
WAAS CH 61334 W07A	APP CRS 076°	Rwy Idg TDZE Apt Elev	4000 547 559
--	------------------------	-----------------------------	---

RNAV (GPS) RWY 7

FREDERICK DOUGLASS/GREATER ROCHESTER INTL (ROC)

RNP APCH - GPS.	MISSED APPROACH: Climb to 1500 then climbing right turn to 3000 direct BILAW and hold.
▼ ▲ Rwy 7 helicopter visibility reduction below 3/4 SM NA.	

ATIS 124.825	ROCHESTER APP CON 119.55 269.6	ROCHESTER TOWER 118.3 254.3	GND CON 121.7	CLNC DEL 118.8 343.65
------------------------	--	---------------------------------------	-------------------------	---------------------------------



CATEGORY	A	B	C	D
LP MDA	940-1 393 (400-1)		940-1 1/8 393 (400-1 1/8)	
LNAV MDA	1060-1 513 (600-1)		1060-1 3/8 513 (600-1 3/8)	
C CIRCLING	1060-1 501 (600-1)		1500-2 3/4 941 (1000-2 3/4)	1500-3 941 (1000-3)

RNAV (GPS) RWY 7

NE-2, 20 MAR 2025 to 17 APR 2025

NE-2, 20 MAR 2025 to 17 APR 2025