

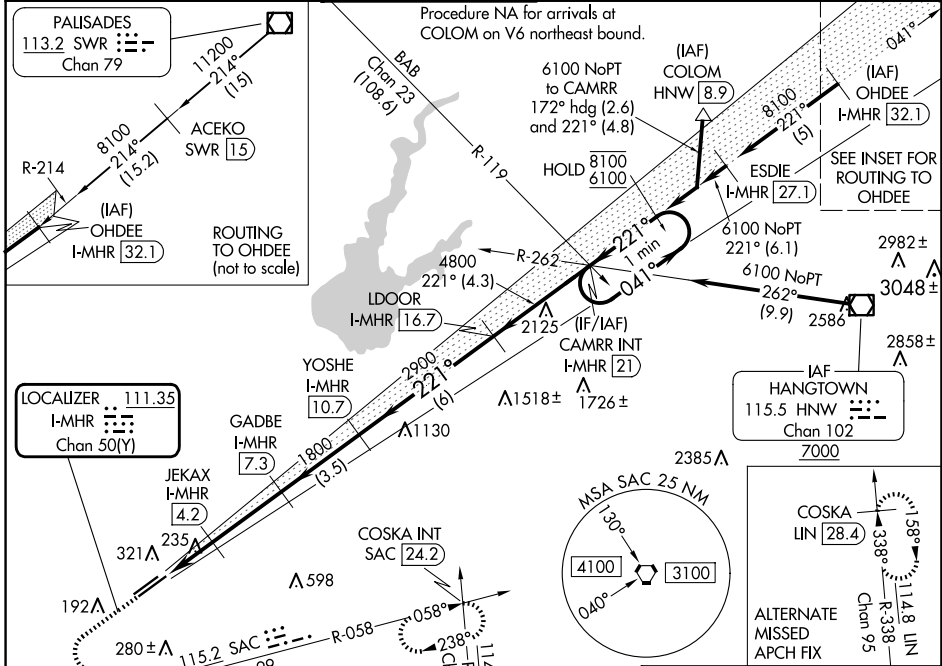
LOC/DME I-MHR 111.35 Chan 50(Y)	APP CRS 221°	Rwy Idg TDZE Apt Elev	11301 98 98
--	------------------------	-----------------------------	--

ILS Z or LOC Z RWY 22L

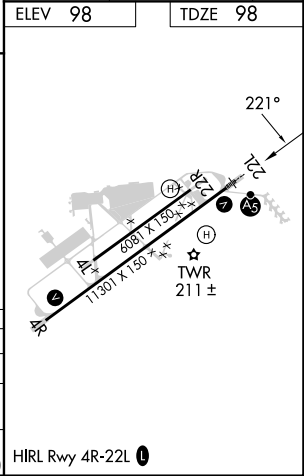
SACRAMENTO MATHER (MHR)

DME required for LOC only.		MALS R	MISSED APPROACH: Climb to 1000, then climbing left turn to 3500 on heading 090° and SAC VORTAC R-058 to COSKA INT/ SAC 24.2 DME and hold, continue climb-in-hold to 3500.
⚠ For inop ALS, increase S-ILS Cat E visibility to RVR 4000 and S-LOC Cat C/D/E visibility to RVR 6000. Circling NA northwest of Rwy 4R-22L. *RVR 1800 authorized with use of FD or AP or HUD to DA (NA when using Sacramento Exec altimeter setting).			

ATIS 118.325	NORCAL APP CON 127.4 317.5	MATHER TOWER * 120.65 (CTAF) 282.25	GND CON 121.85 307.9	CLNC DEL 121.85 307.9	UNICOM 122.95
------------------------	--------------------------------------	---	--------------------------------	---------------------------------	-------------------------



ELEV 98	TDZE 98
1000 3500 SAC R-058 COSKA INT One Minute Holding Pattern	VGSi and ILS glidepath not coincident (VGSi Angle 3.00/TCH 50). CAMRR INT I-MHR [21]
JEKAX I-MHR [4.2] GADBE I-MHR [7.3] YOSHE I-MHR [10.7] LDOOR I-MHR [16.7]	041° → 8100 ← 221° 6100 GS 3.00° TCH 56
1.1 1 NM 3.1 NM 3.5 NM 6 NM 4.3 NM	
CATEGORY	A B C D E
S-ILS 22L*	298/24 200 (200-½)
S-LOC 22L	500/24 402 (500-½) 500/40 402 (500-¾)
CIRCLING	560-1 462 (500-1) 600-1½ 800-2¼ 800-2½ 502 (600-1½) 702 (800-2¼) 702 (800-2½)



SW-2, 20 MAR 2025 to 17 APR 2025

SW-2, 20 MAR 2025 to 17 APR 2025