

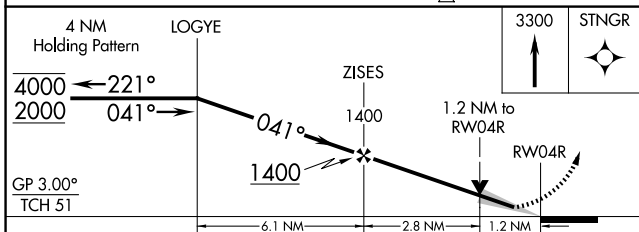
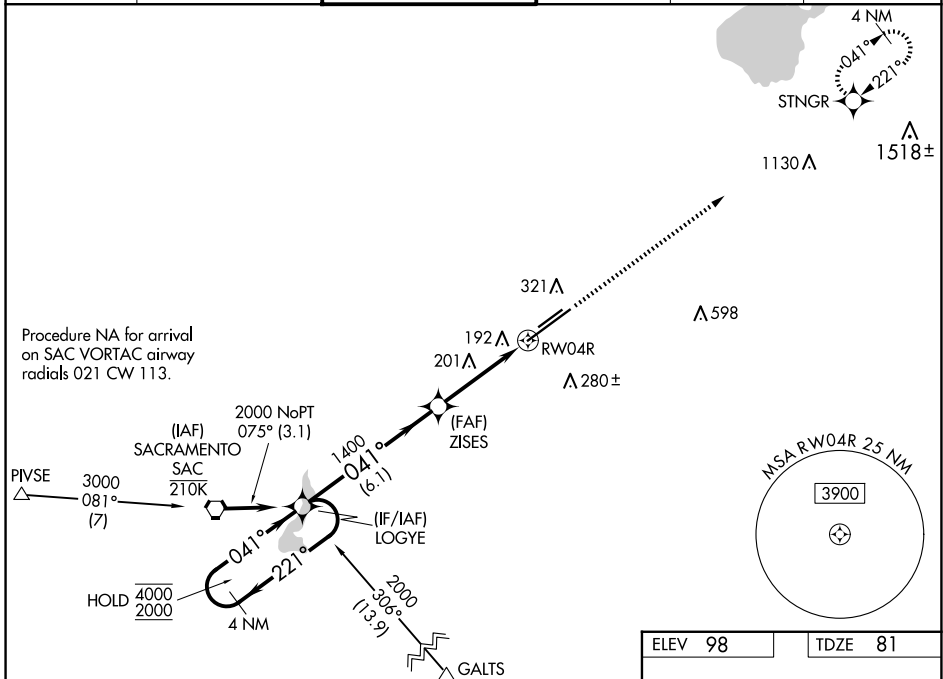
WAAS CH <b>45601</b> <b>W04A</b>	APP CRS <b>041°</b>	Rwy Idg <b>11301</b> TDZE <b>81</b> Apt Elev <b>98</b>
--	------------------------	--

# RNAV (GPS) RWY 4R

SACRAMENTO MATHER (MHR)

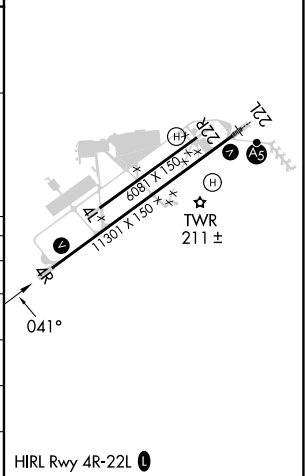
RNP APCH - GPS.	MISSED APPROACH: Climb to 3300 direct STNGR and hold. *Missed approach requires minimum climb of 210 feet per NM to 2500.
<p><b>▼</b> Circling NA northwest of Rwy 4R-22L. For uncompensated Baro-VNAV systems, LNAV/VNAV NA below -15°C or above 54°C.</p> <p><b>▲</b></p>	

ATIS <b>118.325</b>	NORCAL APP CON <b>127.4 317.5</b>	MATHER TOWER ★ <b>120.65 (CTAF) 0 282.25</b>	GND CON <b>121.85 307.9</b>	CLNC DEL <b>121.85 307.9</b>	UNICOM <b>122.95</b>
------------------------	--------------------------------------	---	--------------------------------	---------------------------------	-------------------------



ELEV 98	TDZE 81
---------	---------

CATEGORY	A	B	C	D
LPV DA*	331/40		250 (300-¾)	
LNAV/VNAV DA*	365/45		284 (300-⅞)	
LNAV MDA*	520/55	439 (500-1)	520-1¼	439 (500-1¼)
LNAV MDA	540/55 459 (500-1)	560/55 479 (500-1)	580-1⅓	499 (500-1⅓)
CIRCLING	560-1	580-1	600-1½	740-2
	462 (500-1)	482 (500-1)	502 (600-1½)	642 (700-2)



SW-2, 20 MAR 2025 to 17 APR 2025

SW-2, 20 MAR 2025 to 17 APR 2025