

LOC I-MCC 109.7	APP CRS 163°	Rwy ldg 10599 TDZE 77 Apt Elev 77
---------------------------	------------------------	--

ILS or LOC RWY 16

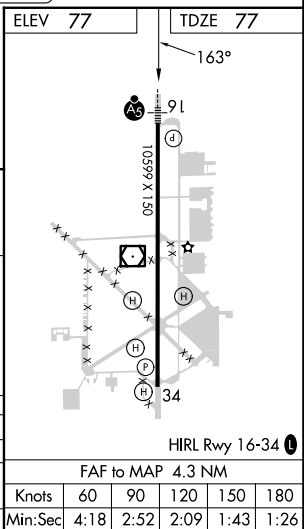
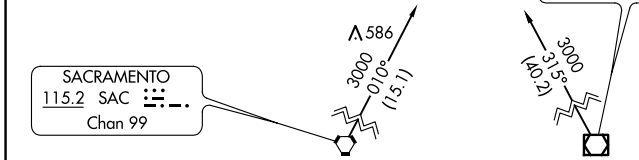
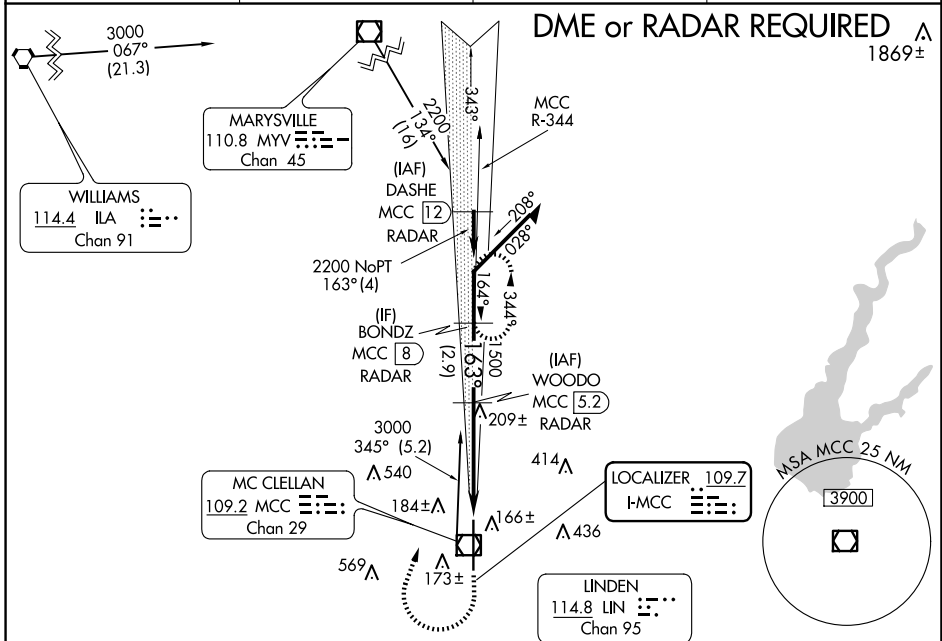
MC CLELLAN AIRFIELD (MCC)

NA DME from MCC VOR/DME. If local altimeter setting is not received, use Sacramento Intl altimeter setting and increase all DH/MDAs 40 feet.

MALSR

MISSED APPROACH: Climb to 1200 then climbing right turn to 2200 via MCC VOR/DME R-344 to BONDZ/MCC 8 DME/RADAR and hold.

AWOS-3 125.975	NORCAL APP CON 127.4 317.5	CINC DEL 119.825	UNICOM 122.975 (CTAF)
--------------------------	--------------------------------------	----------------------------	---------------------------------



Remain within 10 NM	WOODO MCC /RADAR	1200	2200	BONDZ MCC RADAR
3000	343°	↑	↻	MCC R-344
3000	163°			
GS 3.00° TCH 51	1500			
			4.3 NM	

CATEGORY	A	B	C	D
S-ILS 16		277-1/2	200 (200-1/2)	
S-LOC 16		460-1/2	383 (400-1/2)	460-3/4 383 (400-3/4)
CIRCLING		NA		

FAF to MAP 4.3 NM					
Knots	60	90	120	150	180
Min:Sec	4:18	2:52	2:09	1:43	1:26

SW-2, 20 MAR 2025 to 17 APR 2025

SW-2, 20 MAR 2025 to 17 APR 2025