

VOR/DME MCC 109.2 Chan 29	APP CRS 333°	Rwy Idg 10599 TDZE 72 Apt Elev 77
---	------------------------	--

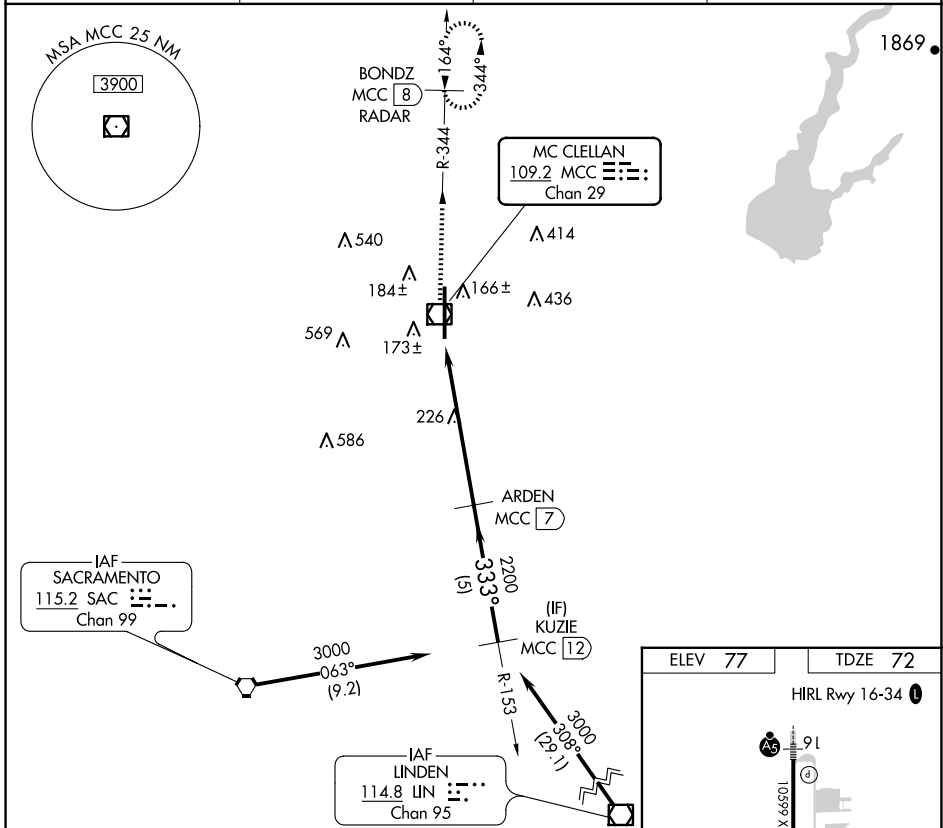
VOR/DME RWY 34

MC CLELLAN AIRFIELD (MCC)

NA VDP NA when using Sacramento Intl altimeter setting. When local altimeter setting not received, use Sacramento Intl altimeter setting and increase all MDAs 40 feet.

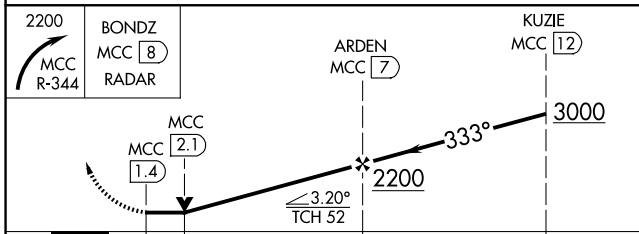
MISSED APPROACH: Climbing right turn to 2200 via MCC R-344 to BONDZ/MCC 8 DME/RADAR and hold.

AWOS-3 125.975	NORCAL APP CON 127.4 317.5	CLNC DEL 119.825	UNICOM 122.975 (CTAF) 0
--------------------------	--------------------------------------	----------------------------	-----------------------------------



SW-2, 20 MAR 2025 to 17 APR 2025

SW-2, 20 MAR 2025 to 17 APR 2025



2200 MCC R-344	BONDZ MCC 8 RADAR	ARDEN MCC 7	KUZIE MCC 12	
0.5	0.7	4.9 NM	5 NM	
CATEGORY	A	B	C	D
S-34	500-1	428 (500-1)	500-1½ 428 (500-1½)	500-1½ 428 (500-1½)
CIRCLING	NA			

