

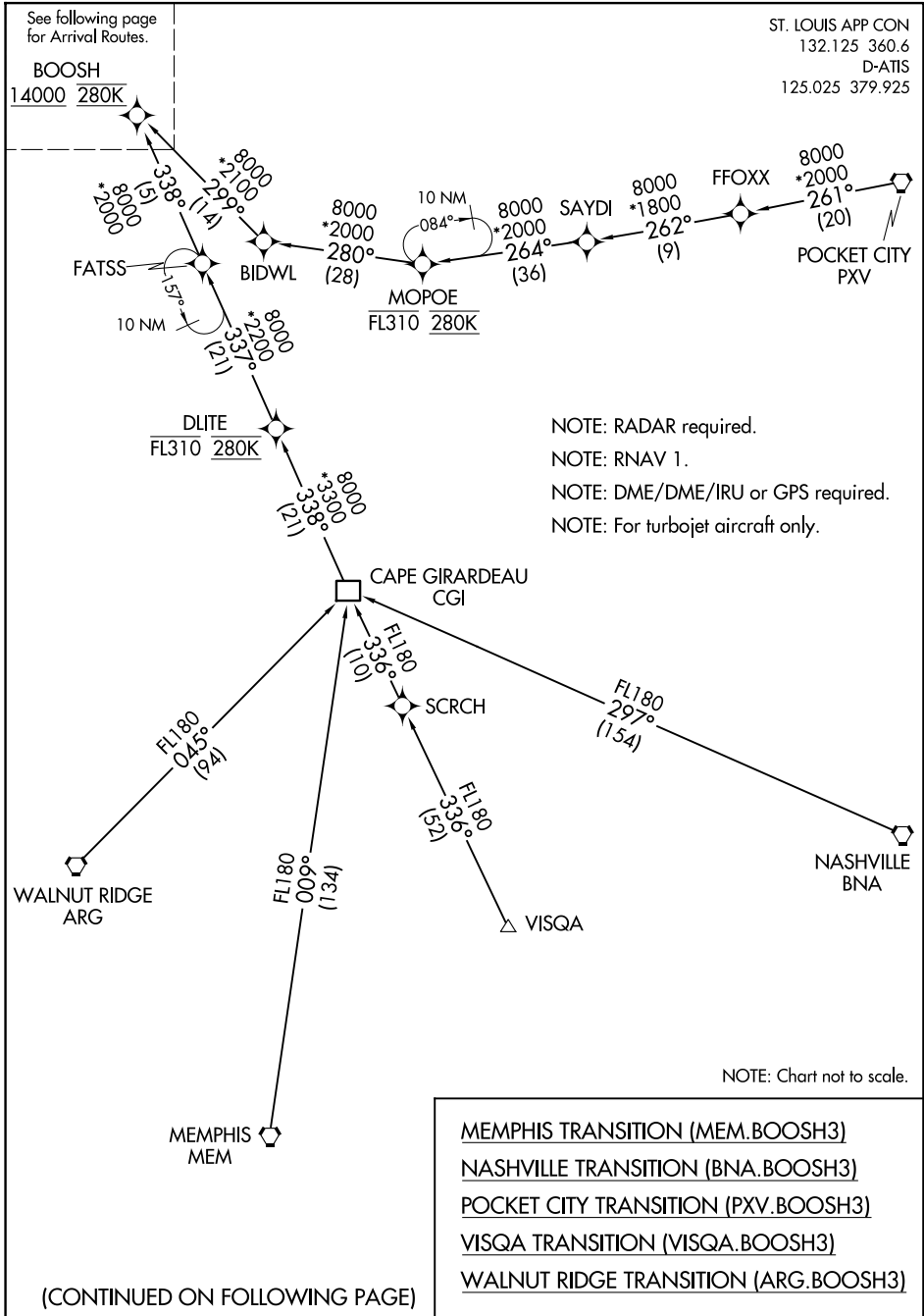
# BOOSH THREE ARRIVAL (RNAV) Transition Routes

ST LOUIS LAMBERT INTL (STL)  
ST. LOUIS, MISSOURI

See following page  
for Arrival Routes.

ST. LOUIS APP CON  
132.125 360.6  
D-ATIS  
125.025 379.925

BOOSH  
14000 280K



NOTE: RADAR required.  
 NOTE: RNAV 1.  
 NOTE: DME/DME/IRU or GPS required.  
 NOTE: For turbojet aircraft only.

NOTE: Chart not to scale.

- MEMPHIS TRANSITION (MEM.BOOSH3)
- NASHVILLE TRANSITION (BNA.BOOSH3)
- POCKET CITY TRANSITION (PXV.BOOSH3)
- VISQA TRANSITION (VISQA.BOOSH3)
- WALNUT RIDGE TRANSITION (ARG.BOOSH3)

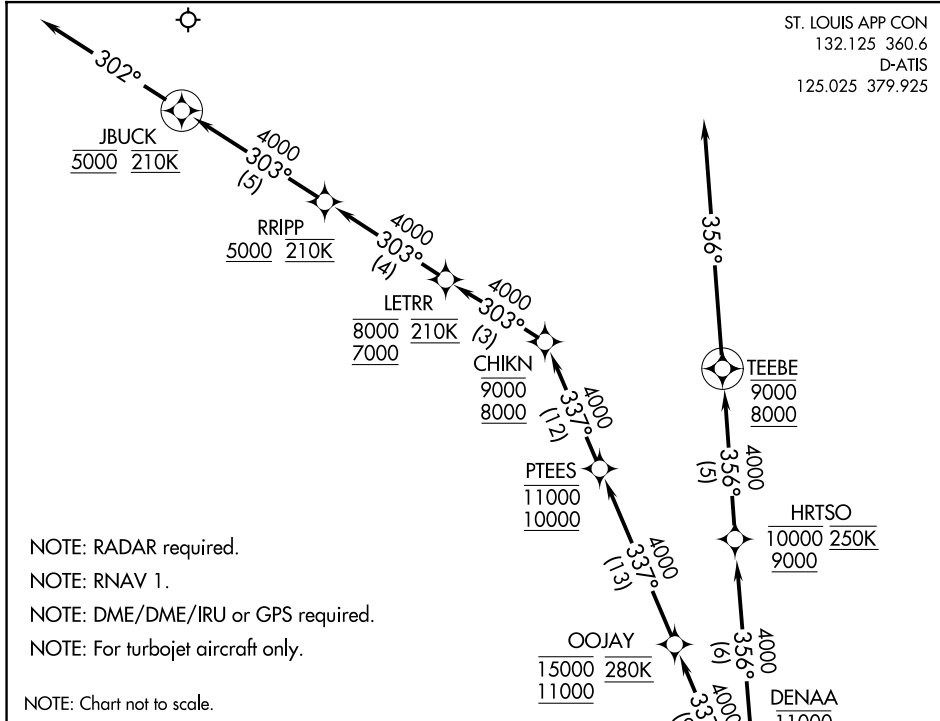
(CONTINUED ON FOLLOWING PAGE)

NC-3, 20 MAR 2025 to 17 APR 2025

NC-3, 20 MAR 2025 to 17 APR 2025

# BOOSH THREE ARRIVAL (RNAV) Arrival Routes

ST. LOUIS APP CON  
132.125 360.6  
D-ATIS  
125.025 379.925



- NOTE: RADAR required.
- NOTE: RNAV 1.
- NOTE: DME/DME/IRU or GPS required.
- NOTE: For turbojet aircraft only.
- NOTE: Chart not to scale.

## ARRIVAL ROUTE DESCRIPTION

From BOOSH on track 337° to QBALL.

LANDING RUNWAYS 11/12L/R: From QBALL on track 337° to cross OOJAY at or above 11000 and at or below 15000 and at 280K, then on track 337° to cross PTEES at or above 10000 and at or below 11000, then on track 337° to cross CHIKN at or above 8000 and at or below 9000, then on track 303° to cross LETRR at or above 7000 and at or below 8000 and at 210K, then on track 303° to cross RRIPP at or above 5000 and at 210K, then on track 303° to cross JBUCK at 5000 and at 210K, if approach clearance not received by JBUCK, then on track 302°. Expect RADAR vectors to final approach course.

LANDING RUNWAYS 29/30L/R: From QBALL on track 356° to cross DENAA at or above 10000 and at or below 11000, then on track 356° to cross HRTSO at or above 9000 and at or below 10000 and at 250K, then on track 356° to cross TEEBE at or above 8000 and at or below 9000, then via assigned instrument approach procedure. If approach clearance not received by TEEBE, then on track 356°, expect RADAR vectors to final approach course.

# BOOSH THREE ARRIVAL (RNAV) Arrival Routes