

LOC/DME I-OGZ <b>111.95</b> Chan 56(Y)	APP CRS <b>123°</b>	Rwy ldg TDZE Apt Elev <b>9000</b> <b>618</b> <b>618</b>
--	------------------------	--

# ILS RWY 11 (CAT II & III)

## ST LOUIS LAMBERT INTL (STL)

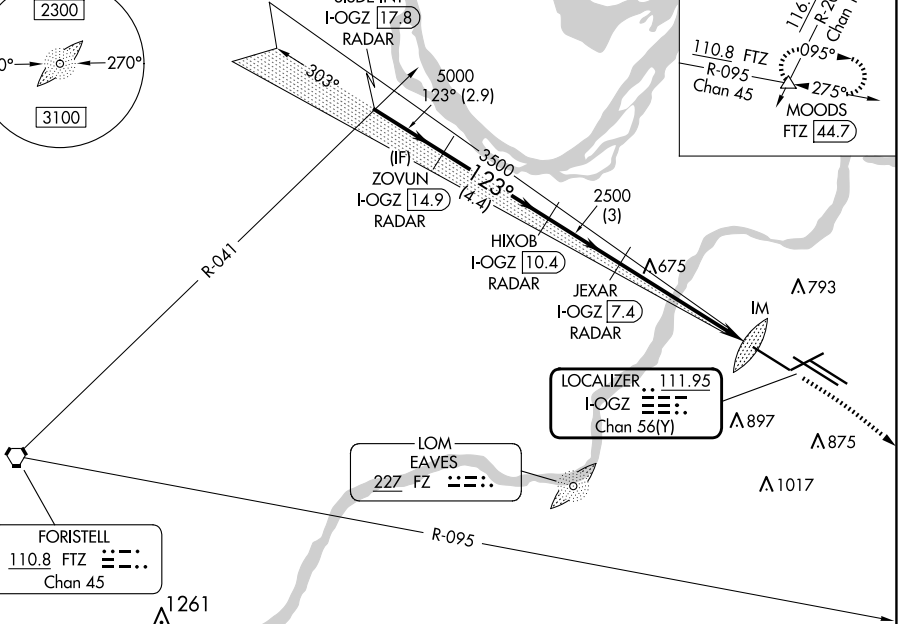
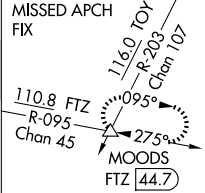
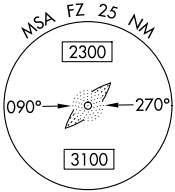
RADAR required for procedure entry. DME or RADAR required.



MISSED APPROACH: Climb to 1060 then climbing right turn to 3000 on heading 130° and FTZ R-095 to MOODS INT/FTZ 44.7 DME and hold.

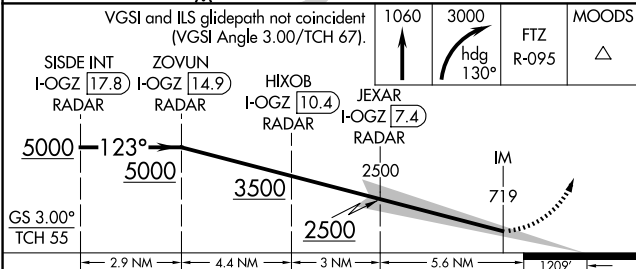
Simultaneous approach authorized with Rwy 12R/L. Disregard OM signal associated with ILS to Rwy 12R.

D-ATIS <b>125.025</b> <b>379.925</b>	ST. LOUIS APP CON <b>132.125 360.6</b>	ST. LOUIS TOWER <b>132.475 239.275</b>	GND CON <b>121.9 348.6</b> (Inbound) <b>121.65 377.175</b> (Outbound) <b>118.925 227.125</b> (Rwy 11/29)	CLNC DEL <b>119.5 363.1</b>	CPDLC
--	---	---	---	--------------------------------	-------

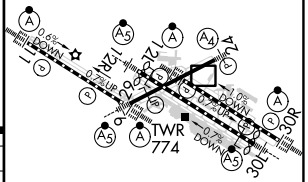


NC-3, 20 MAR 2025 to 17 APR 2025

NC-3, 20 MAR 2025 to 17 APR 2025



VGSI and ILS glidepath not coincident (VGSI Angle 3.00/TCH 67).	1060	3000	FTZ R-095	MOODS	ELEV 618	TDZE 618
SISDE INT I-OGZ 17.8	ZOVUN I-OGZ 14.9	HIXOB I-OGZ 10.4	JEXAR I-OGZ 7.4	IM	Rwy 6-24 7603 X 150	Rwy 11-29 9000 X 150
					Rwy 12L-30R 9013 X 150	Rwy 12R-30L 11020 X 150



CATEGORY	A	B	C	D
S-ILS 11	CAT II RA 187/12 100 DA 718			
S-ILS 11	CAT III RVR 06			

### CATEGORY II & III ILS - SPECIAL AIRCREW & AIRCRAFT CERTIFICATION REQUIRED

HIRL all Rwys  
TDZ/CL Rws 11, 12L, 12R, 29, and 30R