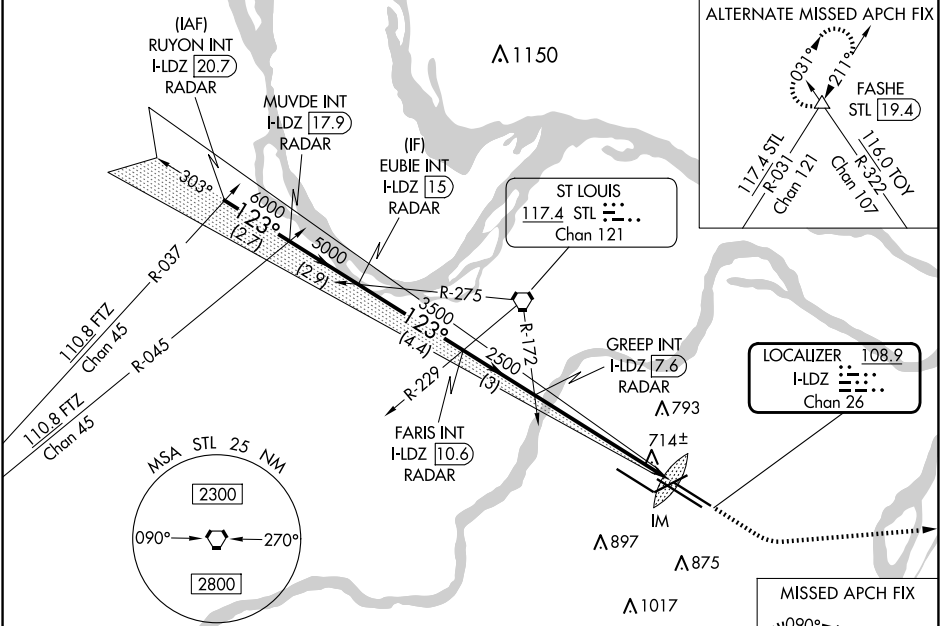


LOC/DME I-LDZ <b>108.9</b> Chan 26	APP CRS <b>123°</b>	Rwy Idg TDZE Rwy Elev <b>8956</b> <b>541</b> <b>618</b>
--	------------------------	---

# ILS RWY 12L (CAT II & III)

ST LOUIS LAMBERT INTL (STL)

D-ATIS <b>125.025</b> <b>379.925</b>	ST. LOUIS APP CON <b>132.125 360.6</b>	ST. LOUIS TOWER <b>120.05 284.6</b>	GND CON <b>121.9 348.6</b> (Inbound) <b>121.65 377.175</b> (Outbound) <b>118.925 227.125</b> (Rwy 11/29)	CLNC DEL <b>119.5 363.1</b>	CPDLC
			Disregard OM indications. Simultaneous approach authorized with Rwy 11.		



NC-3, 20 MAR 2025 to 17 APR 2025

NC-3, 20 MAR 2025 to 17 APR 2025

ELEV 618	D	TDZE 541
----------	---	----------

Rwy 6-24 7603 X 150  
Rwy 11-29 9000 X 150  
Rwy 12L-30R 9013 X 150  
Rwy 12R-30L 11020 X 150

HIRL all Rwy TDZ/CL Rwy 11, 12L, 12R, 29, and 30R

## RADAR and DME REQUIRED

RUYON INT RADAR I-LDZ [20.7]	MUVDE INT RADAR I-LDZ [17.9]	EUBIE INT RADAR I-LDZ [15]	FARIS INT RADAR I-LDZ [10.6]	GREEP INT RADAR I-LDZ [7.6]	IM
---------------------------------	---------------------------------	-------------------------------	---------------------------------	--------------------------------	----

2500	3000	TOY
------	------	-----

6000	5000	3500	2500	IM 639
------	------	------	------	--------

GS 3.00°	TCH 54
----------	--------

CATEGORY	A	B	C	D
S-ILS 12L	CAT II RA 112/12 100 DA 641			
S-ILS 12L	CAT III RVR 06			

### CATEGORY II & III ILS - SPECIAL AIRCREW & AIRCRAFT CERTIFICATION REQUIRED