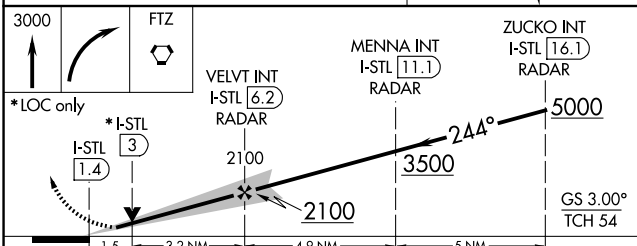
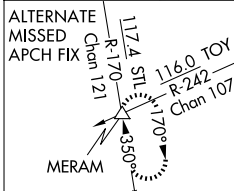
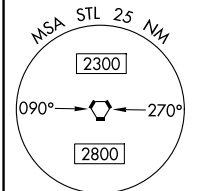
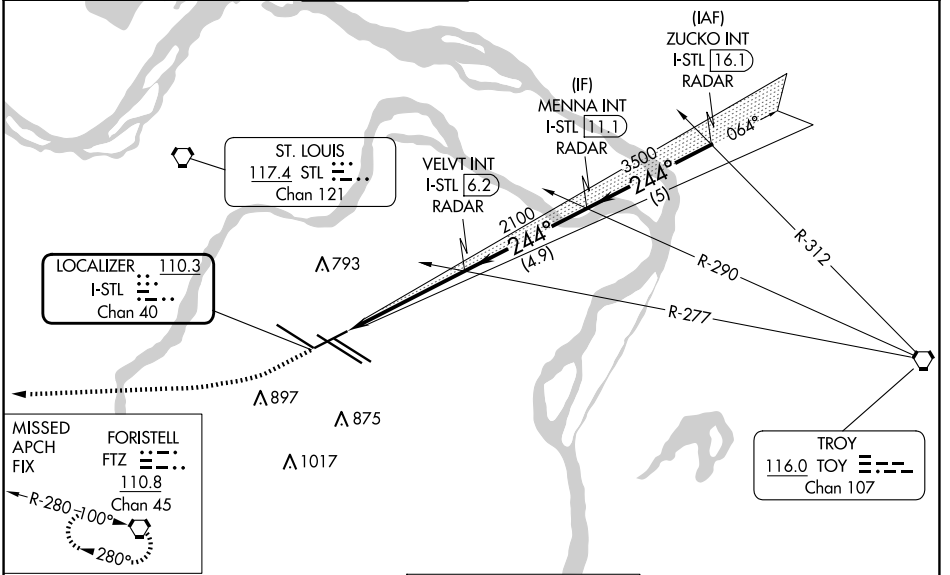


LOC/DME I-STL <b>110.3</b> Chan 40	APP CRS <b>244°</b>	Rwy Idg TDZE <b>7603</b> <b>534</b> Apt Elev <b>618</b>
--	------------------------	---

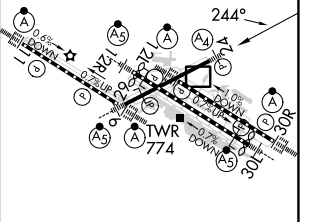
# ILS or LOC RWY 24

ST LOUIS LAMBERT INTL (STL)

RADAR required for procedure entry.		MALS 	MISSED APPROACH: Climb to 3000 then right turn direct FTZ VORTAC and hold.		
▼ Inop table does not apply to S-ILS 24. For inop ALS, increase S-LOC 24 Cat E visibility to 1 1/2 SM.		GND CON <b>121.9 348.6</b> (Inbound) <b>121.65 377.175</b> (Outbound) <b>118.925 227.125</b> (Rwy 11/29)			CLNC DEL <b>119.5 363.1</b>
D-ATIS <b>125.025</b> <b>379.925</b>	ST. LOUIS APP CON <b>132.125 360.6</b>	ST. LOUIS TOWER <b>120.05 284.6</b>	CPDLC		



ELEV 618	TDZE 534
Rwy 6-24 7603 X 150 Rwy 11-29 9000 X 150 Rwy 12L-30R 9013 X 150 Rwy 12R-30L 11020 X 150	



CATEGORY	A	B	C	D	E
S-ILS 24	734/40 200 (200-3/4)				
S-LOC 24	1080/40	546 (500-3/4)	1080-1 3/8	546 (500-1 1/2)	

HIRL all Rwys					
TDZ/CL Rwys 11, 12L, 12R, 29, and 30R					
FAF to MAP 4.8 NM					
Knots	60	90	120	150	180
Min:Sec	4:48	3:12	2:24	1:55	1:36

NC-3, 20 MAR 2025 to 17 APR 2025

NC-3, 20 MAR 2025 to 17 APR 2025