

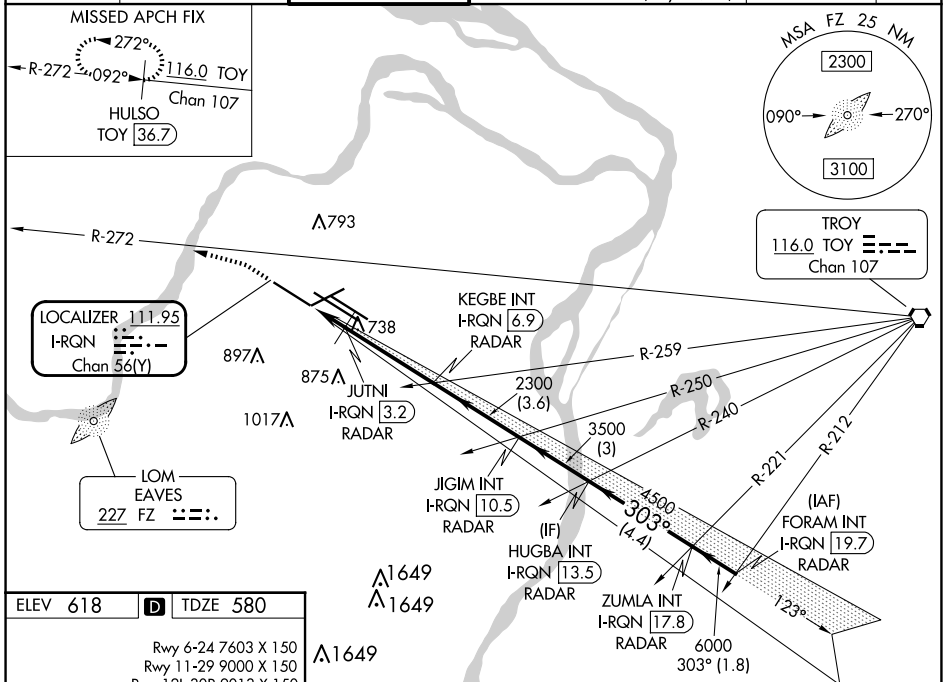
LOC/DME I-RQN 111.95 Chan 56(Y)	APP CRS 303°	Rwy Idg TDZE Apt Elev 9000 580 618
---	------------------------	--

ILS or LOC RWY 29

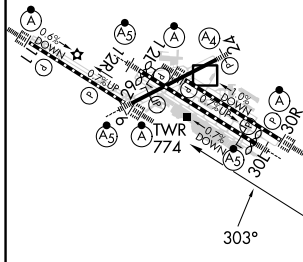
ST LOUIS LAMBERT INTL (STL)

RADAR required for procedure entry. DME or RADAR required.		ALSIF-2 	MISSED APPROACH: Climb to 1040 then climbing left turn to 3000 on heading 286° and on TOY VORTAC R-272 to HULSO/TOY 36.7 DME and hold.
<p>Simultaneous approach authorized with Rwy 30R/L. Autopilot coupled approach NA. Rwy 29 helicopter visibility reduction below RVR 4000 NA. For inop ALS, increase S-ILS Cat E visibility to RVR 4000, increase S-LOC Cats A/B visibility to RVR 5500, and Cat C/D/E to RVR 6000.</p>			

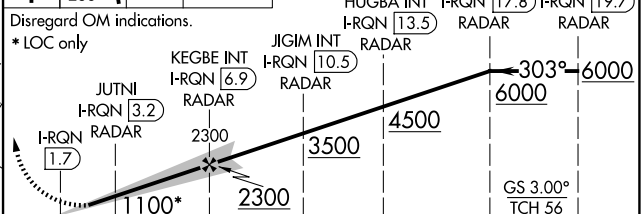
D-ATIS 125.025 379.925	ST. LOUIS APP CON 132.125 360.6	ST. LOUIS TOWER 132.475 239.275	GND CON 121.9 348.6 (Inbound) 121.65 377.175 (Outbound) 118.925 227.125 (Rwy 11/29)	CLNC DEL 119.5 363.1	CPDLC
--	---	---	---	--------------------------------	-------



ELEV 618	D	TDZE 580
----------	----------	----------



1040	3000	TOY R-272	HULSO TOY 36.7	VGSI and ILS glidepath not coincident (VGSI Angle 3.00/ TCH 73).
------	------	-----------	----------------	--



HIRL all Rwy's					
TDZ/CL Rwy's 11, 12L, 12R, 29, and 30R					
FAF to MAP 5.2 NM					
Knots	60	90	120	150	180
Min:Sec	5:12	3:28	2:36	2:05	1:44
S-ILS 29	780/18		200 (200-½)		
S-LOC 29	980/40		400 (400-¾)		

NC-3, 20 MAR 2025 to 17 APR 2025

NC-3, 20 MAR 2025 to 17 APR 2025