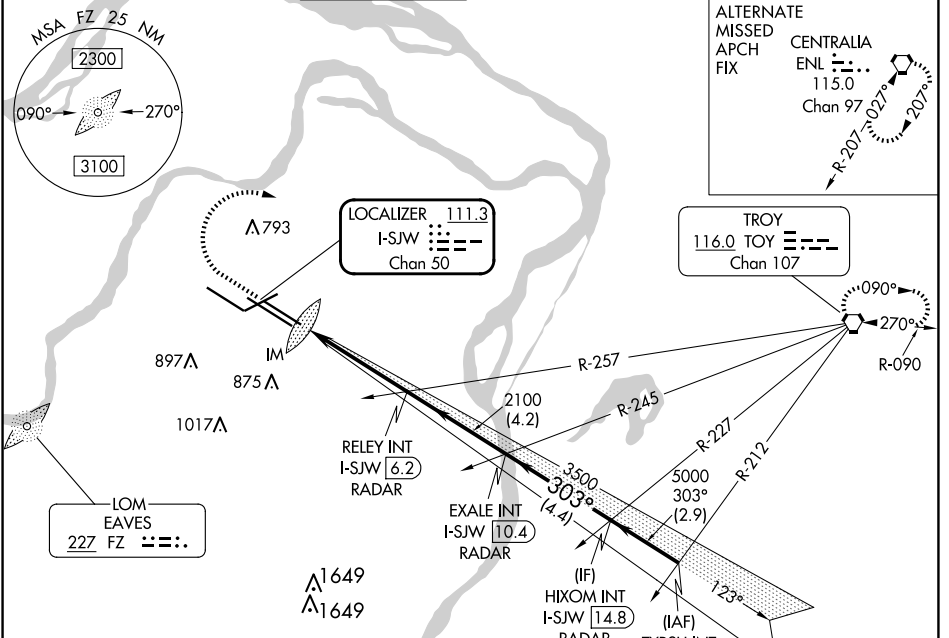


LOC/DME I-SJW 111.3 Chan 50	APP CRS 303°	Rwy Idg TDZE Apt Elev	9013 605 618
---	------------------------	-----------------------------	---

ILS or LOC RWY 30R

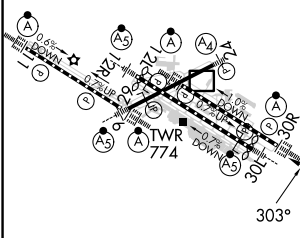
ST LOUIS LAMBERT INTL (STL)

RADAR required for procedure entry.		ALSF-2 		MISSED APPROACH: Climb to 1020 then climbing right turn to 3000 direct TOY VORTAC and hold.	
▼ For inop ALS, increase S-ILS 30R Cat E visibility to RVR 4000 and S-LOC 30R Cat C/D/E visibility to 1 3/8 SM. Simultaneous approach authorized with Rwy 29. Simultaneous approach authorized with Rwy 30L requires use of vertical guidance; maintain last assigned altitude until established on glideslope.		GND CON 121.9 348.6 (Inbound) 121.65 377.175 (Outbound) 118.925 227.125 (Rwy 11/29)		CLNC DEL 119.5 363.1	
D-ATIS 125.025 379.925	ST. LOUIS APP CON 132.125 360.6	ST. LOUIS TOWER 120.05 284.6	CPDLC		



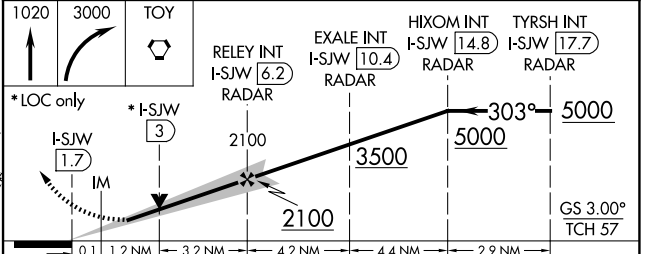
ELEV 618	D TDZE 605
----------	-------------------

Rwy 6-24 7603 X 150
Rwy 11-29 9000 X 150
Rwy 12L-30R 9013 X 150
Rwy 12R-30L 11020 X 150



HIRL all Rwy's
TDZ/CL Rwy's 11, 12L, 12R, 29, and 30R
FAF to MAP 4.5 NM

Knots	60	90	120	150	180
Min:Sec	4:30	3:00	2:15	1:48	1:30



CATEGORY	A	B	C	D	E
S-ILS 30R	805/18 200 (200-1/2)				
S-LOC 30R	1080/24 475 (500-1/2)		1080/50 475 (500-1)		

NC-3, 20 MAR 2025 to 17 APR 2025

NC-3, 20 MAR 2025 to 17 APR 2025