

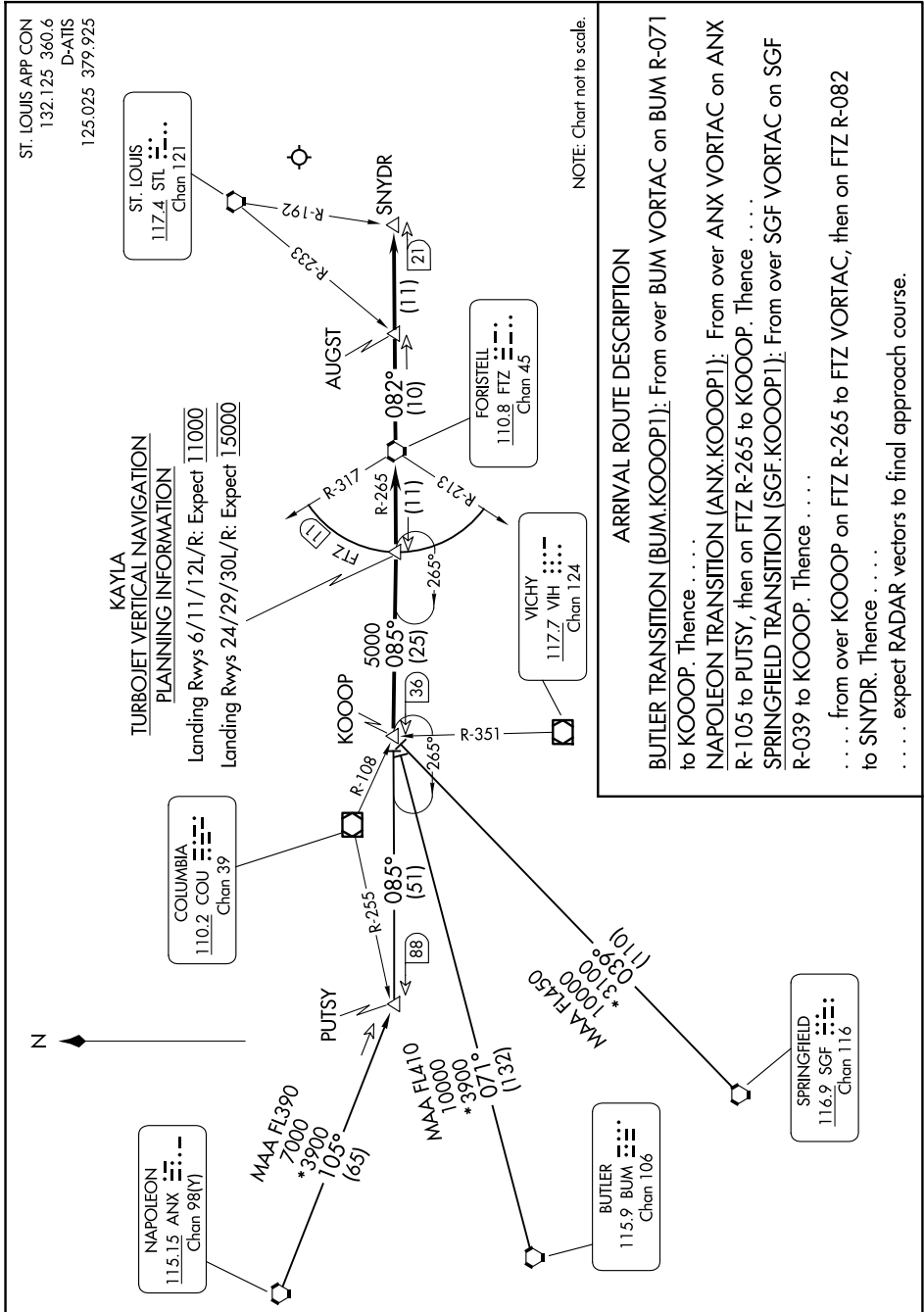
KOOOP ONE ARRIVAL

AL-360 (FAA)

ST LOUIS LAMBERT INTL (STL)

ST. LOUIS, MISSOURI

NC-3, 20 MAR 2025 to 17 APR 2025



ST. LOUIS APP CON
132.125 360.6
D-ATIS
125.025 379.925

KAYLA
TURBOJET VERTICAL NAVIGATION
PLANNING INFORMATION
Landing Rwy 6/11/12L/R: Expect 11000
Landing Rwy 24/29/30L/R: Expect 15000

NOTE: Chart not to scale.

ARRIVAL ROUTE DESCRIPTION

BUTLER TRANSITION [BUM.KOOOP1]: From over BUM VORTAC on BUM R-071 to KOOOP. Thence

NAPOLEON TRANSITION [ANX.KOOOP1]: From over ANX VORTAC on ANX R-105 to PUTSY, then on FTZ R-265 to KOOOP. Thence

SPRINGFIELD TRANSITION [SGF.KOOOP1]: From over SGF VORTAC on SGF R-039 to KOOOP. Thence

. from over KOOOP on FTZ R-265 to FTZ VORTAC, then on FTZ R-082 to SNYDR. Thence

. expect RADAR vectors to final approach course.

KOOOP ONE ARRIVAL

NC-3, 20 MAR 2025 to 17 APR 2025