

(LINDY8.STL) 25051

# LINDBERGH EIGHT DEPARTURE

AL-360 (FAA)

ST LOUIS LAMBERT INTL (STL)

ST. LOUIS, MISSOURI

D-ATIS  
 125.025 379.925  
 CLNC DEL  
 119.5 363.1  
 CPDLC  
 GND CON  
 121.9 348.6 (Inbound)  
 121.65 377.175 (Outbound)  
 118.925 227.125 (Rwy 11/29)  
 ST. LOUIS TOWER  
 120.05 284.6 (Rwys 12L/30R, 24)  
 118.5 257.7 (Rwy 12R/30L)  
 132.475 239.275 (Rwys 6, 11/29)  
 ST. LOUIS DEP CON  
 128.1 307.05

ST LOUIS  
 117.4 STL :...  
 Chan 121

**TOP ALTITUDE:  
 (JETS) 5000/  
 (PROPS) 3000**

VICHY  
 117.7 VIH :...  
 Chan 124

FARMINGTON  
 115.7 FAM :...  
 Chan 104

LITTLE ROCK  
 113.9 LIT :...  
 Chan 86

WALNUT RIDGE  
 114.5 ARG :...  
 Chan 92

### TAKEOFF MINIMUMS

- Rwys 6, 12L/R, 24, 29: Standard.
- Rwy 11: 200-1 or standard with minimum climb of 370' per NM to 900.
- Rwy 30L: 200-1 or standard with minimum climb of 245' per NM to 800.
- Rwy 30R: 200-1 $\frac{3}{8}$  or standard with minimum climb of 230' per NM to 800.

NOTE: DME and RADAR required.

(CONTINUED ON FOLLOWING PAGE)

NOTE: Chart not to scale.

# LINDBERGH EIGHT DEPARTURE

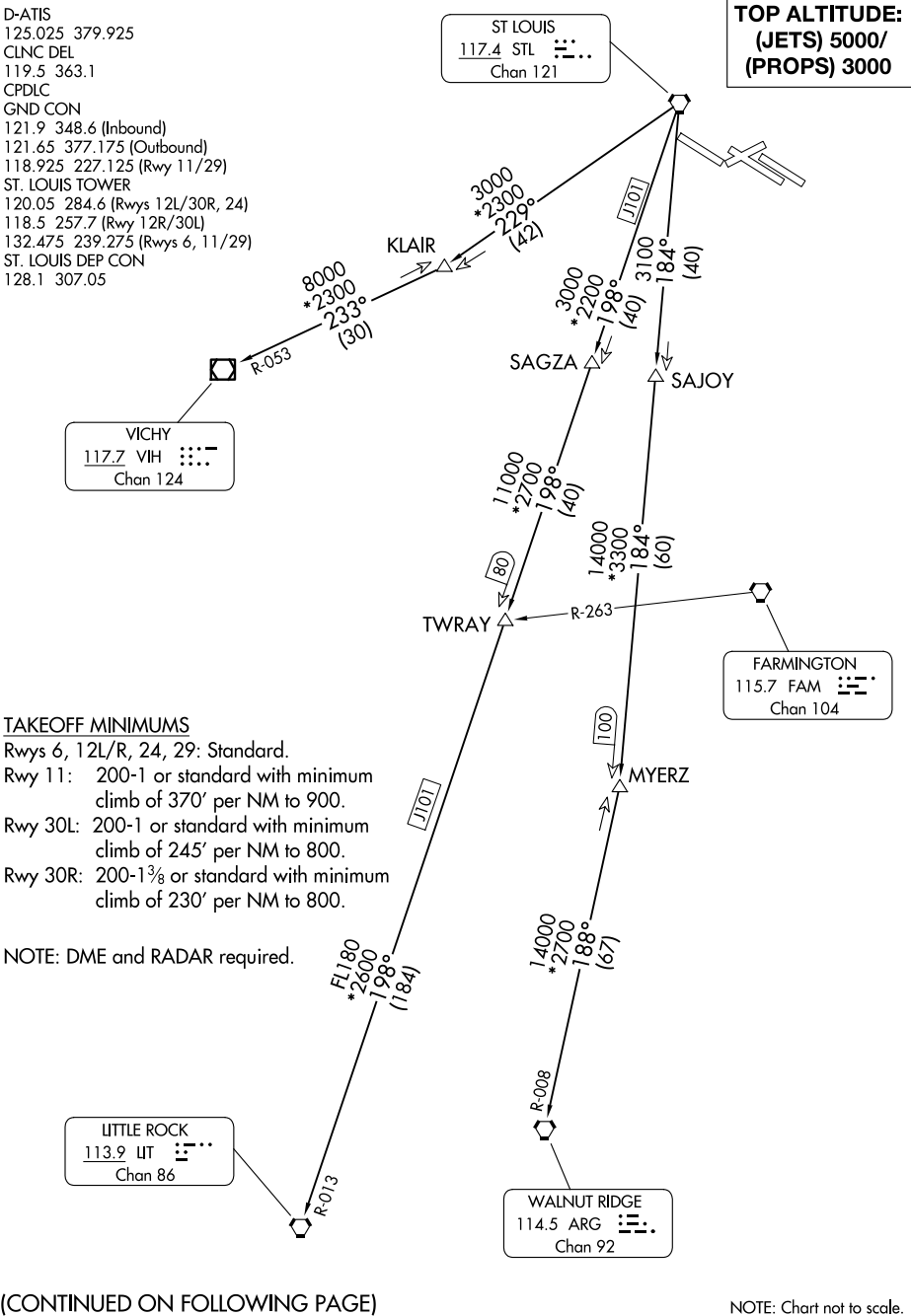
(LINDY8.STL) 17JUN21

ST. LOUIS, MISSOURI

ST LOUIS LAMBERT INTL (STL)

NC-3, 20 MAR 2025 to 17 APR 2025

NC-3, 20 MAR 2025 to 17 APR 2025





DEPARTURE ROUTE DESCRIPTION

Climb on assigned heading for vector to appropriate route.

JETS: Maintain 5000 or assigned altitude, thence . . . .

PROPS: Maintain 3000 or assigned altitude, thence . . . .

. . . . (transition). Expect filed altitude 10 minutes after departure.

LITTLE ROCK TRANSITION (LINDY8.LIT): From over STL VORTAC on STL R-198 to TWRAY, then on STL R-198 and LIT R-013 to LIT VORTAC.

MYERZ TRANSITION (LINDY8.MYERZ): From over STL VORTAC on STL R-184 to MYERZ.

VICHY TRANSITION (LINDY8.VIH): From over STL VORTAC on STL R-229 to KLAIR, then on VIH R-053 to VIH VOR/DME.

WALNUT RIDGE TRANSITION (LINDY8.ARG): From over STL VORTAC on STL R-184 to MYERZ, then on ARG R-008 to ARG VORTAC.

NC-3, 20 MAR 2025 to 17 APR 2025

NC-3, 20 MAR 2025 to 17 APR 2025