

APP CRS	Rwy Idg	9000
123°	TDZE	618
	Apt Elev	618

RNAV (RNP) Z RWY 11

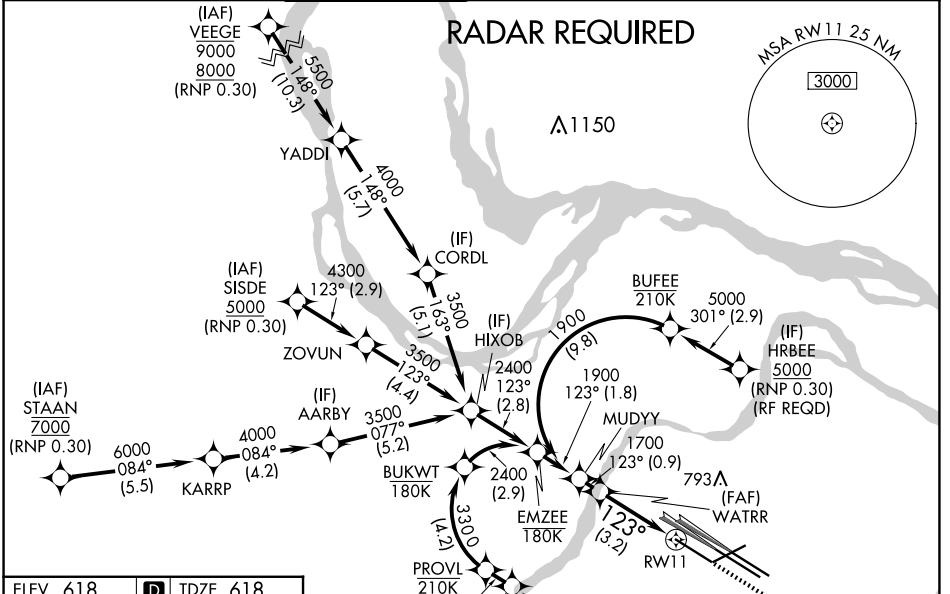
ST LOUIS LAMBERT INTL (STL)

V For uncompensated Baro-VNAV systems, procedure NA below -16°C (4°F) or above 54°C (130°F). Simultaneous approach authorized with Rwy 12L/R, except for arrivals at RRRPP and HRBEE. Use of FD or AP providing RNAV track guidance required during simultaneous operations. GPS required. For inop ALS, increase RNP 0.30 all Cats visibility to ¾.

ALS-F-2

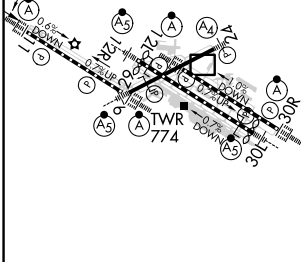
MISSED APPROACH: Climb to 1100 then climbing right turn to 3000 direct IMPER and hold.

D-ATIS 125.025 379.925	ST. LOUIS APP CON 132.125 360.6	ST. LOUIS TOWER 132.475 239.275	GND CON 121.9 348.6 (Inbound) 121.65 377.175 (Outbound) 118.925 227.125 (Rwy 11/29)	CLNC DEL 119.5 363.1	CPDLC
--	---	---	---	--------------------------------	-------



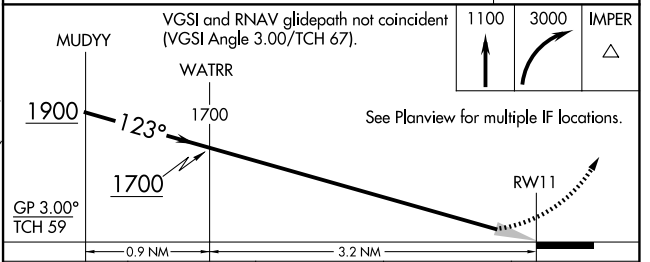
ELEV 618	D	TDZE 618
----------	----------	----------

Rwy 6-24 7603 X 150
 Rwy 11-29 9000 X 150
 Rwy 12L-30R 9013 X 150
 Rwy 12R-30L 11020 X 150



MISSED APCH FIX IMPER

006° 180° 4 NM



CATEGORY	A	B	C	D
RNP 0.30 DA		875-½	257 (300-½)	

HIRL all Rwys
 TDZ/CL Rwys 11, 12L, 12R, 29, and 30R

ST. LOUIS, MISSOURI
 Orig-B 17AUG17

38°45'N-90°22'W

AUTHORIZATION REQUIRED

ST LOUIS LAMBERT INTL (STL)
 RNAV (RNP) Z RWY 11

NC-3, 20 MAR 2025 to 17 APR 2025

NC-3, 20 MAR 2025 to 17 APR 2025