

WAAS CH <b>78121</b> <b>W12B</b>	APP CRS <b>123°</b>	Rwy ldg TDZE Apt Elev	<b>10553</b> <b>540</b> <b>618</b>
--	------------------------	-----------------------------	--

# RNAV (GPS) Y RWY 12R

ST LOUIS LAMBERT INTL (STL)

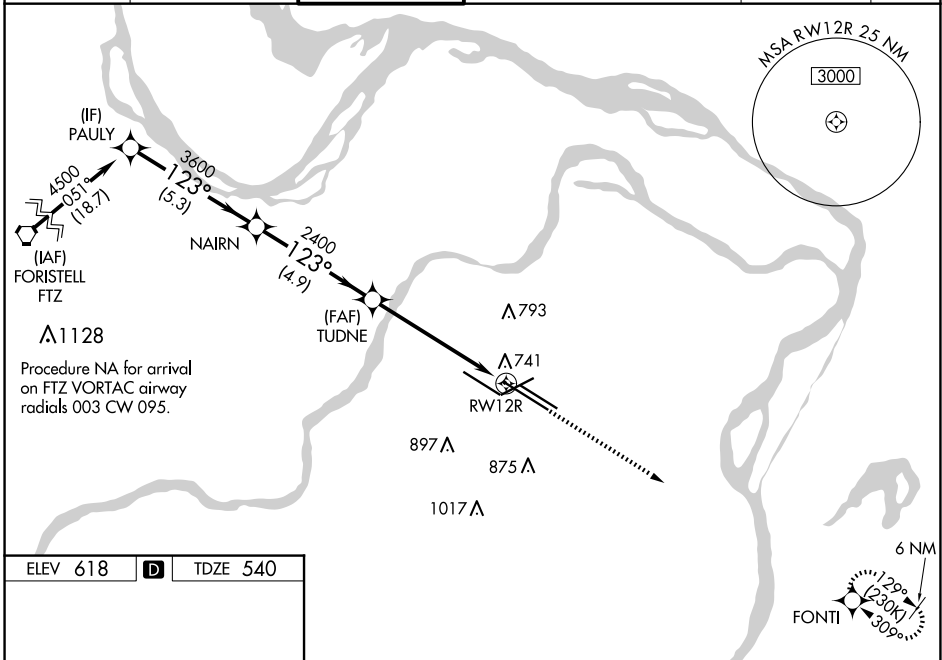
**▽** For uncompensated Baro-VNAV systems, LNAV/VNAV NA below -16°C (4°F) or above 54°C (130°F). DME/DME RNP-0.3 NA. For inop ALS, increase LPV Cat E visibility to RVR 4000, LNAV Cats A/B visibility to RVR 5000, and LNAV Cat E visibility to 1½ SM. Inop table does not apply to LNAV/VNAV. Simultaneous approach authorized with Rwy 11. LNAV procedure NA during simultaneous operations. Use of FD or AP required during simultaneous operations.

MALSR



**MISSED APPROACH:**  
Climb to 5000 direct FONTI and hold, continue climb-in-hold to 5000.

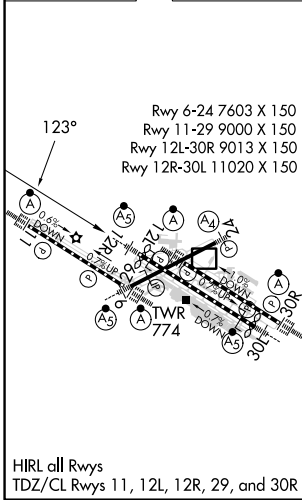
D-ATIS <b>125.025</b> <b>379.925</b>	ST. LOUIS APP CON <b>132.125 360.6</b>	ST. LOUIS TOWER <b>118.5 257.7</b>	GND CON <b>121.9 348.6</b> (Inbound) <b>121.65 377.175</b> (Outbound) <b>118.925 227.125</b> (Rwy 11/29)	CLNC DEL <b>119.5 363.1</b>	CPDLC
--	---	---------------------------------------	---	--------------------------------	-------



NC-3, 20 MAR 2025 to 17 APR 2025

NC-3, 20 MAR 2025 to 17 APR 2025

ELEV 618	<b>D</b>	TDZE 540
----------	----------	----------



	PAULY	NAI RN	TUDNE	RWY 12R	
	4500	3600	2400		
	123°				
	5.3 NM		4.9 NM	4.4 NM	
	GP 3.00°		TCH 54		
			*1.3 NM to RWY 12R		
			5000	FONTI	
			*LNAV only		
CATEGORY	A	B	C	D	E
LPV	DA	740/18		200 (200-½)	
LNAV/VNAV	DA	1103-2		563 (500-2)	
LNAV MDA	1000/40		460 (400-¾)	1000/50 460 (400-1)	