

ST. LOUIS, MISSOURI

TACAN RWY 30L

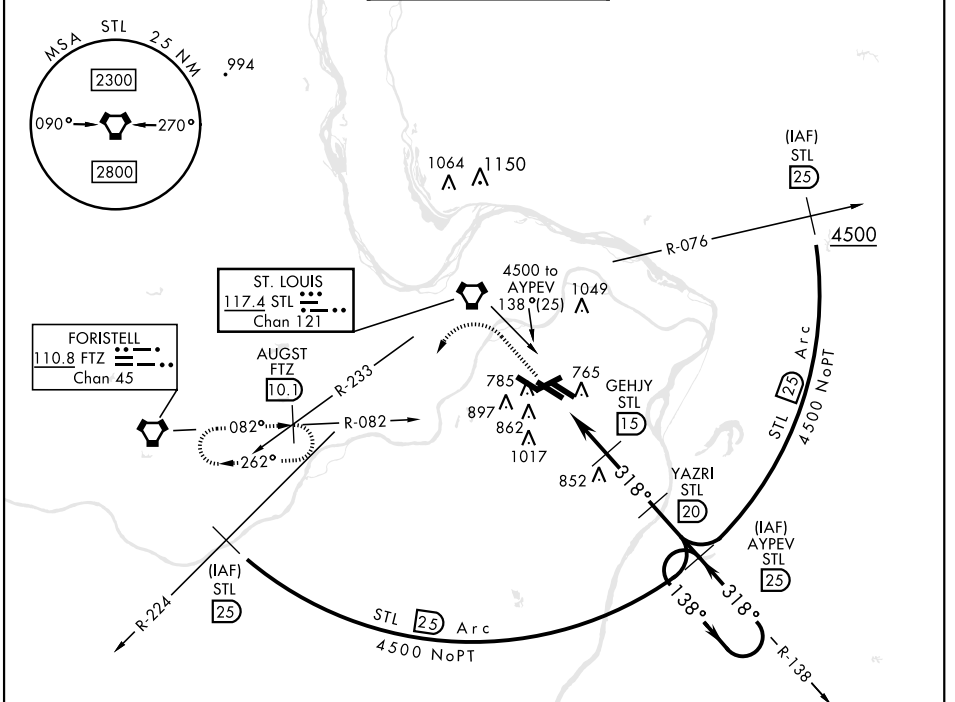
VORTAC STL 117.4 Chan 121	APCH CRS 318°	Rwy ldg 10,679 TDZE 583 Arprt Elev 618
---	-------------------------	---

[USAF]

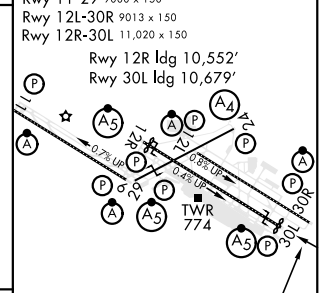
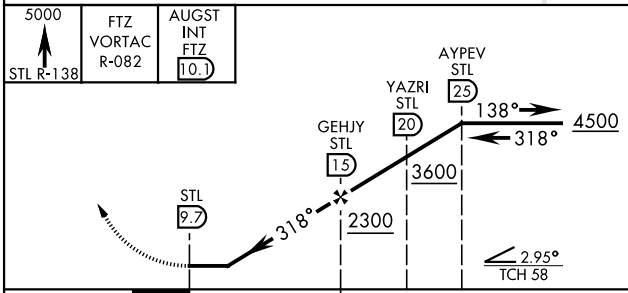
ST. LOUIS LAMBERT INTL (KSTL)

NA * Inoperative table does not apply.	MALSR A5	MISSED APPROACH: Climb to 5000 via STL R-138 and FTZ VORTAC R-082 to AUGST INT/FTZ 10.1 DME and hold.
---	--------------------	---

ATIS 125.025 379.925	ST. LOUIS APP CON 121.02 338.25	N 120.05	ST. LOUIS TOWER 132.475	S 118.5	(Inbd) 121.9 348.6	GND CON 121.65 377.175	CLNC DEL 119.5 363.1
		W 284.6	239.275	257.7	(Outbd) 121.65 377.175	(West) 118.925 227.125	



ELEV 618	TDZE 583
Rwy 6-24 7603 x 150 Rwy 11-29 9000 x 150 Rwy 12L-30R 9013 x 150 Rwy 12R-30L 11,020 x 150 Rwy 12R ldg 10,552' Rwy 30L ldg 10,679'	



CATEGORY	A	B	C	D	E
S-30L*	1100/50	517 (500-1)	1100-1½ 517(500-1½)	1100-1¾	517 (500-1¾)
CIRCLING	NOT AUTHORIZED				

ST. LOUIS, MISSOURI 38°45'N-90°22'W ST. LOUIS LAMBERT INTL (KSTL)

Amdt 1 25079

TACAN RWY 30L

NC-3, 20 MAR 2025 to 17 APR 2025

NC-3, 20 MAR 2025 to 17 APR 2025