

WAAS CH <b>86202</b> <b>W31A</b>	APP CRS <b>313°</b>	Rwy Idg TDZE Apt Elev	<b>5811</b> <b>214</b> <b>214</b>
--	------------------------	-----------------------------	---

# RNAV (GPS) RWY 31

MCNARY FLD (SLE)

RNP APCH.

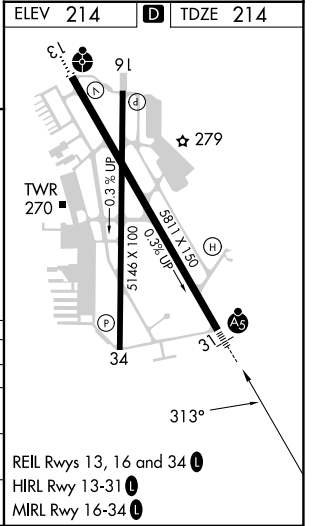
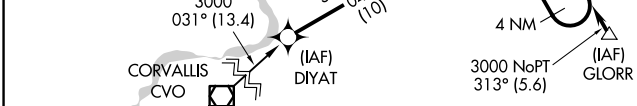
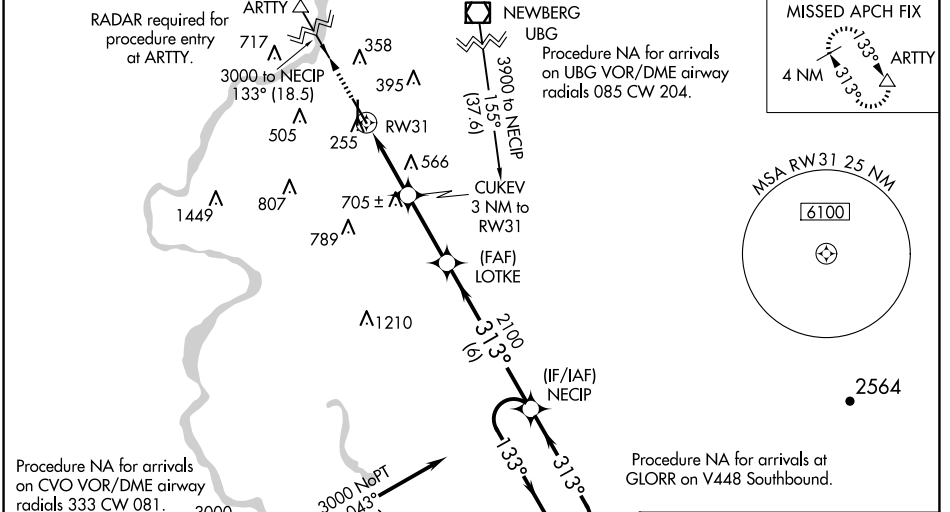
For uncompensated Baro-VNAV systems, LNAV/VNAV NA below -15°C or above 54°C

When local altimeter setting not received, use Mc Minnville altimeter setting and increase all DA 49 feet; increase all MDAs 60 feet; increase LNAV/VNAV visibility all Cats to 1 3/8 SM, LNAV Cat C and D visibility to 2 SM, and Circling Cat A visibility to 1 1/4 SM and Cat C visibility to 2 3/4 SM. Baro-VNAV and VDP NA when using Mc Minnville altimeter setting. For inop ALS, increase LNAV/VNAV all Cats visibility to 1 7/8 SM and increase LNAV Cat C and D visibility to 2 1/2 SM. For inop ALS when using Mc Minnville altimeter setting, increase LPV all Cats visibility to 4500, increase LNAV/VNAV all Cats visibility to 2 SM, increase LNAV Cats C and D visibility to 2 1/2 SM. \*\*RVR 1800 authorized with use of FD or AP or HUD to DA, NA when using Mc Minnville altimeter setting.

MALSR

MISSED APPROACH:  
Climb to 3700 direct ARTTY and hold, continue climb-in-hold to 3700.

ATIS <b>124.55</b>	SEATTLE CENTER <b>125.8 291.7</b>	SALEM TOWER * <b>119.1 (CTAF) 0 257.2</b>	GND CON <b>121.9</b>	UNICOM <b>122.95</b>
-----------------------	--------------------------------------	--	-------------------------	-------------------------



CATEGORY	A	B	C	D
LPV DA **		414/24	200 (200-1/2)	
LNAV/VNAV DA		891-1 1/2	677 (700-1 1/2)	
LNAV MDA	1020/50	806 (900-1)	1020-1 7/8	806 (900-1 7/8)
CIRCLING	1020-1 806 (900-1)	1020-1 1/4 806 (900-1 1/4)	1060-2 1/2 846 (900-2 1/2)	1260-3 1046 (1100-3)

NW-1, 20 MAR 2025 to 17 APR 2025

NW-1, 20 MAR 2025 to 17 APR 2025