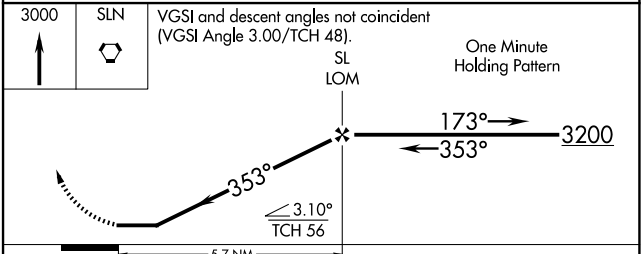
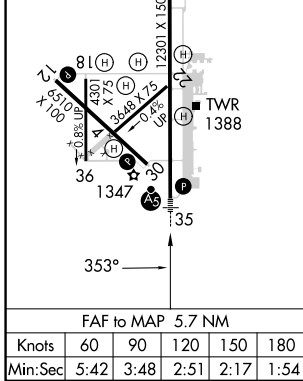
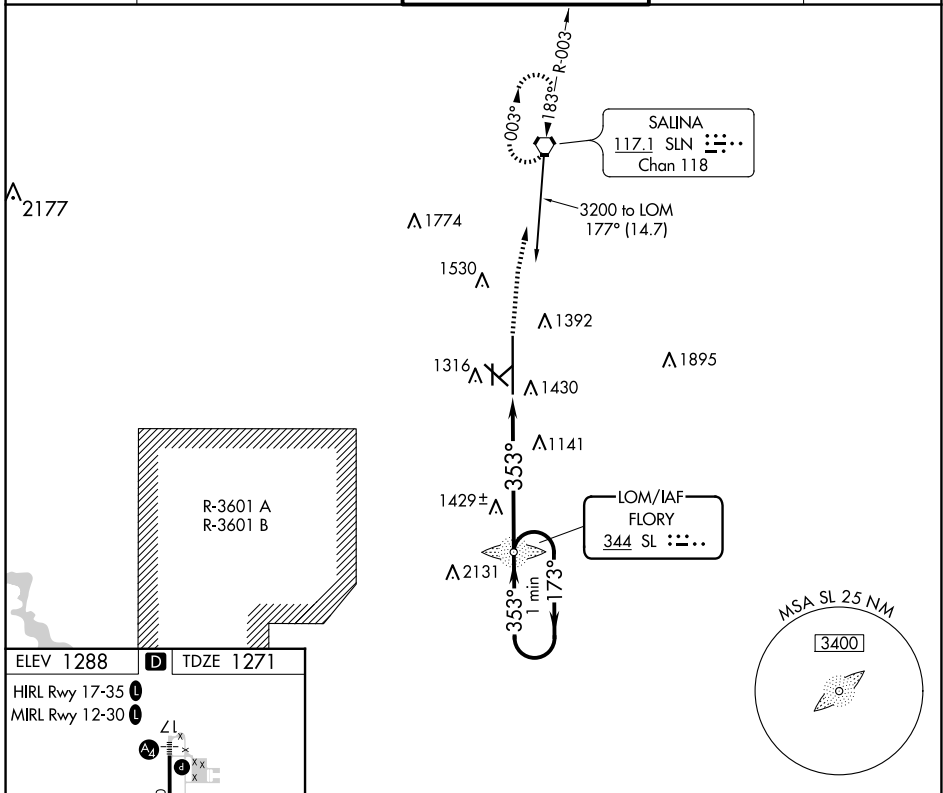


LOM SL <b>344</b>	APP CRS <b>353°</b>	Rwy Idg TDZE Apt Elev	<b>12300</b> <b>1271</b> <b>1288</b>
----------------------	------------------------	-----------------------------	--

# NDB RWY 35

SALINA RGNL (SLN)

ATIS <b>120.15</b>	KANSAS CITY CENTER <b>134.9 363.2</b>	SALINA TOWER ★ <b>119.3 (CTAF) 257.7</b>	GND CON <b>121.9 360.8</b>	UNICOM <b>122.95</b>
		Cat D Circling NA southwest of runway 12-30. For inop ALS, increase S-35 Cats A/B visibility to 1 SM and Cats C/D to 1½ SM. MALS R MISSED APPROACH: Climb to 3000 direct SLN VORTAC and hold.		



CATEGORY	A	B	C	D
S-35	1760-¾ 489 (500-¾)	489 (500-¾)	1760-1 489 (500-1)	1760-1¼ 489 (500-1¼)
CIRCLING	1820-1 532 (600-1)	1840-1 552 (600-1)	1860-1½ 572 (600-1½)	1860-2 572 (600-2)

SALINA, KANSAS  
Amdt 17C 20MAY21

38°47'N-97°39'W

SALINA RGNL (SLN)  
**NDB RWY 35**

NC-2, 20 MAR 2025 to 17 APR 2025

NC-2, 20 MAR 2025 to 17 APR 2025