

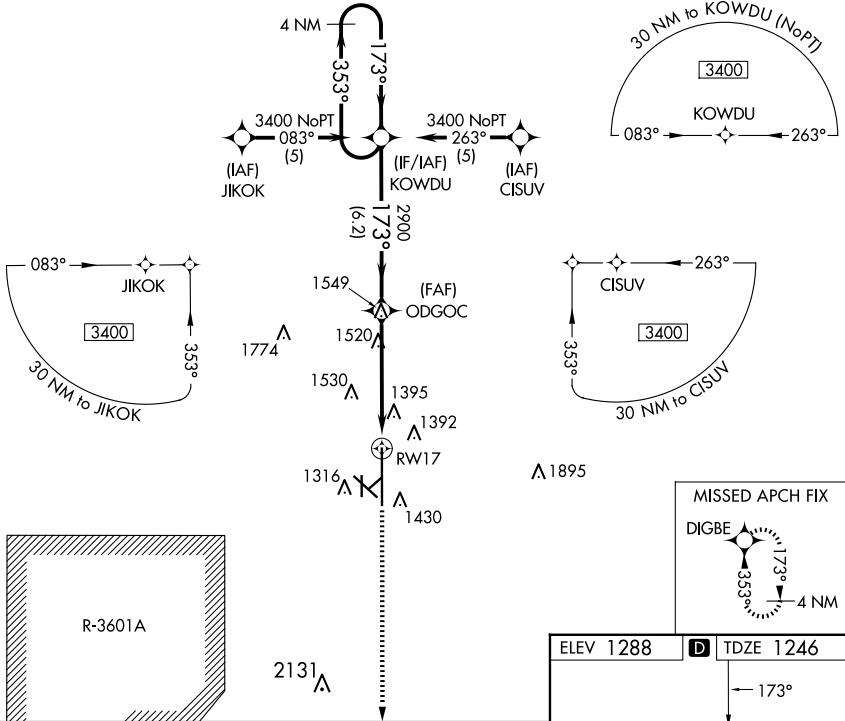
WAAS CH <b>70322</b> <b>W17A</b>	APP CRS <b>173°</b>	Rwy Idg <b>12300</b> TDZE <b>1246</b> Apt Elev <b>1288</b>
--	------------------------	--

# RNAV (GPS) RWY 17

SALINA RGNL (SLN)

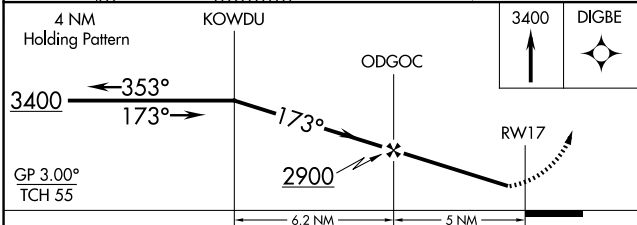
<b>▽</b> DME/DME RNP-0.3 NA. Baro-VNAV NA below -17°C (2°F). Circling NA for Cat D southwest of Rwy 12-30. Inoperative table does not apply.	MALS 	MISSED APPROACH: Climb to 3400 direct DIGBE and hold.
--	----------	---

ATIS <b>120.15</b>	KANSAS CITY CENTER <b>134.9 363.2</b>	SALINA TOWER ★ <b>119.3 (CTAF) 257.7</b>	GND CON <b>121.9 360.8</b>	UNICOM <b>122.95</b>
-----------------------	--	---	-------------------------------	-------------------------



NC-2, 20 MAR 2025 to 17 APR 2025

NC-2, 20 MAR 2025 to 17 APR 2025



GP 3.00° TCH 55	3400	← 353°	173° →	2900	6.2 NM	5 NM
CATEGORY	A	B	C	D		
LPV DA	1496-1		250 (300-1)			
LNAV/VNAV DA	1741-1¾		495 (500-1¾)			
LNAV MDA	1780-1	534 (500-1)	1780-1½	534 (500-1½)	1780-1¾	534 (500-1¾)
CIRCLING	1820-1¾	1840-1¾	1860-1¾	1860-2	HIRL Rwy 17-35 1 MIRL Rwy 12-30 1	
	532 (600-1¾)	552 (600-1¾)	572 (600-1¾)	572 (600-2)		

