

RNAV 1 - GPS.  
RADAR required.

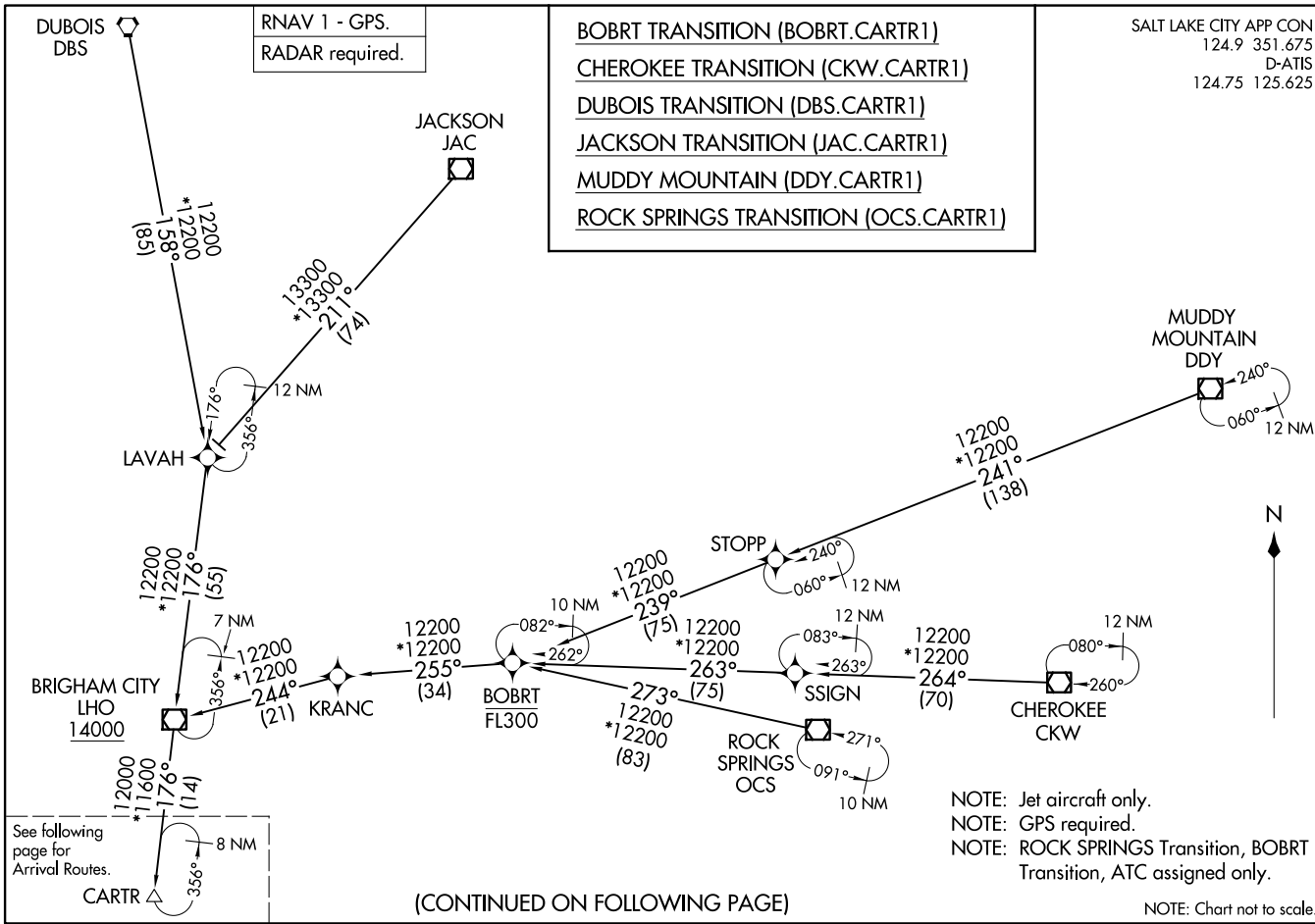
- BOBRT TRANSITION (BOBRT.CARTR1)
- CHEROKEE TRANSITION (CKW.CARTR1)
- DUBOIS TRANSITION (DBS.CARTR1)
- JACKSON TRANSITION (JAC.CARTR1)
- MUDDY MOUNTAIN (DDY.CARTR1)
- ROCK SPRINGS TRANSITION (OCS.CARTR1)

SALT LAKE CITY APP CON  
124.9 351.675  
D-ATIS  
124.75 125.625

CARTR ONE ARRIVAL (RNAV) Transition Routes  
(CARTR.CARTR1) 20FEB25

(CARTR.CARTR1) 25051  
CARTR ONE ARRIVAL (RNAV) Transition Routes  
AL-365 (FAA)

SALT LAKE CITY INTL (SLC)  
SALT LAKE CITY, UTAH



See following page for Arrival Routes.

(CONTINUED ON FOLLOWING PAGE)

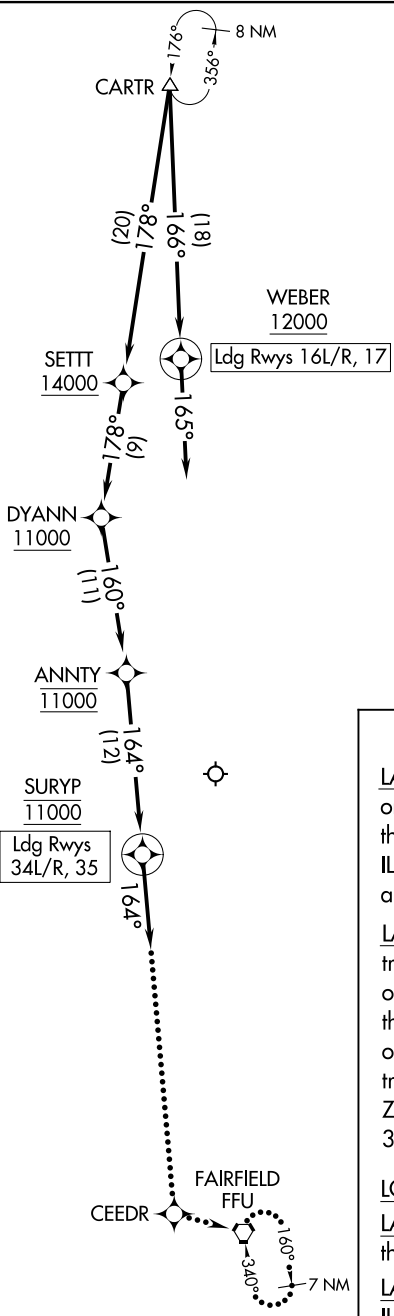
NOTE: Jet aircraft only.  
NOTE: GPS required.  
NOTE: ROCK SPRINGS Transition, BOBRT Transition, ATC assigned only.

NOTE: Chart not to scale.

# CARTR ONE ARRIVAL (RNAV) Arrival Routes

RNAV 1 - GPS.  
RADAR required.

SALT LAKE CITY APP CON  
124.9 351.675  
D-ATIS  
124.75 125.625



NOTE: Jet aircraft only.  
NOTE: GPS required.  
NOTE: ROCK SPRINGS Transition, BOBRT Transition, ATC assigned only.

NOTE: Chart not to scale.

### ARRIVAL ROUTE DESCRIPTION

**LANDING RUNWAYS 16L/R, 17:** From CARTR on track 166° to cross WEBER at or above 12000, then on track 165°. Expect RADAR vectors for ILS or RNAV approach to Rwy 16L/R or Rwy 17 approach.

**LANDING RUNWAYS 34L/R, 35:** From CARTR on track 178° to cross SETTT at or above 14000, then on track 178° to cross DYANN at or above 11000, then on track 160° to cross ANNTY at 11000, then on track 164° to cross SURYP at 11000, then on track 164°. Expect RADAR vectors for RNAV (RNP) Z RWY 34L approach or RADAR vectors to 34L/R, RWY 35 final approach course.

### LOST COMMUNICATIONS

**LANDING NORTH:** After SURYP proceed to CEEDR, then left turn to FFU VORTAC and hold at 11000.

**LANDING SOUTH:** After WEBER proceed on the ILS or RNAV RWY 16L approach.

SW-4, 20 MAR 2025 to 17 APR 2025

SW-4, 20 MAR 2025 to 17 APR 2025