

LOC/DME I-MOY <b>109.5</b> Chan <b>32</b>	APP CRS <b>164°</b>	Rwy Idg <b>12002</b> TDZE <b>4231</b> Apt Elev <b>4231</b>
---	------------------------	--

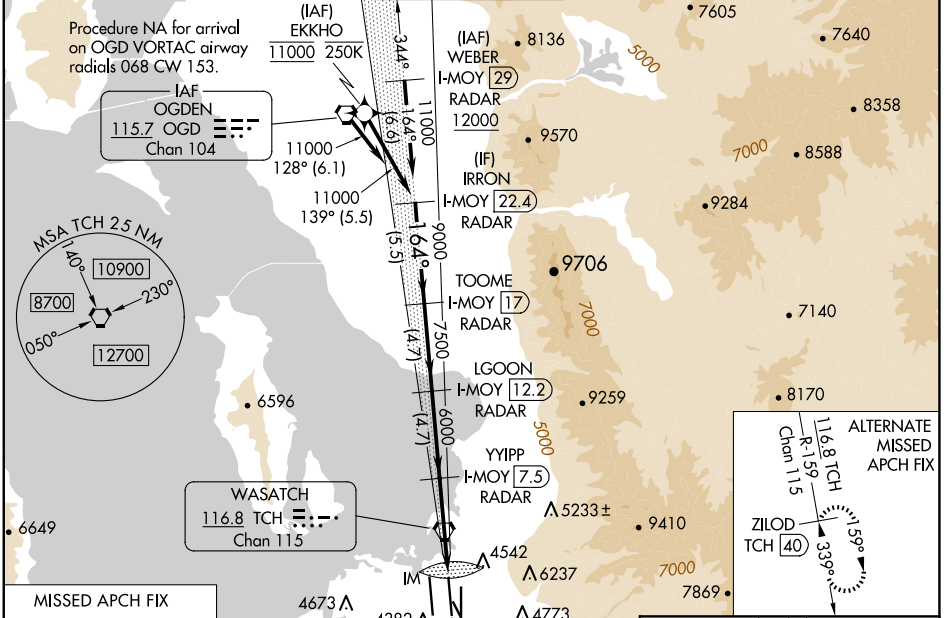
# ILS or LOC RWY 16L

SALT LAKE CITY INTL (SLC)

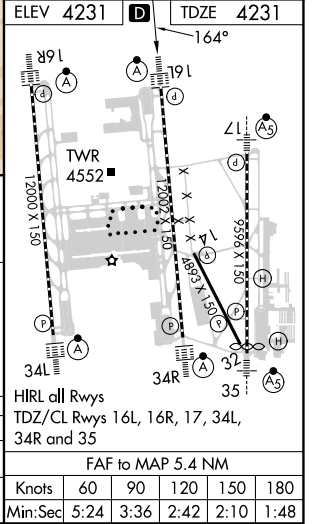
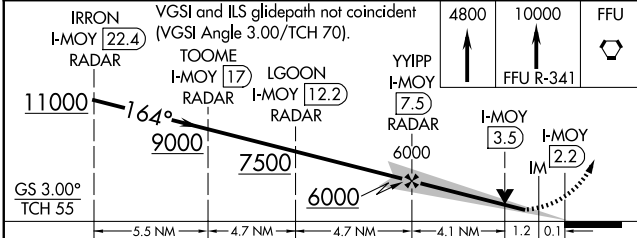
RNP APCH - GPS. From EKKHO.  
DME or RADAR required.  
Simultaneous approach authorized. For inop ALS, increase S-LOC 16L Cat C/D visibility to 1 3/8 SM.

ALSF-2  
MISSED APPROACH: Climb to 4800 then climb to 10000 on FFU VORTAC R-341 to FFU VORTAC and hold.

D-ATIS <b>124.75 125.625</b>	SALT LAKE CITY APP CON <b>125.7 284.6</b>	SALT LAKE CITY TOWER <b>119.05 257.8</b>	GND CON <b>123.775 348.6</b>	CLNC DEL <b>127.3 379.975</b>	CPDLC
---------------------------------	--	---	---------------------------------	----------------------------------	-------



MISSED APCH FIX FAIRFIELD FFU 116.6 Chan 113	WASATCH 116.8 TCH Chan 115	LOCALIZER 109.5 I-MOY Chan 32	IRON I-MOY 22.4 RADAR	TOOME I-MOY 17 RADAR	LGOON I-MOY 12.2 RADAR	YYIPP I-MOY 7.5 RADAR	FFU R-341
--	----------------------------------	--	-----------------------------	----------------------------	------------------------------	-----------------------------	--------------



CATEGORY	A	B	C	D
S-ILS 16L		4431/18	200 (200-1/2)	
S-LOC 16L	4720/24	489 (500-1/2)	4720/50	489 (500-1)

SW-4, 20 MAR 2025 to 17 APR 2025

SW-4, 20 MAR 2025 to 17 APR 2025

HIRL all Rwys					
TDZ/CL Rwys 16L, 16R, 17, 34L, 34R and 35					
FAF to MAP 5.4 NM					
Knots	60	90	120	150	180
Min:Sec	5:24	3:36	2:42	2:10	1:48