
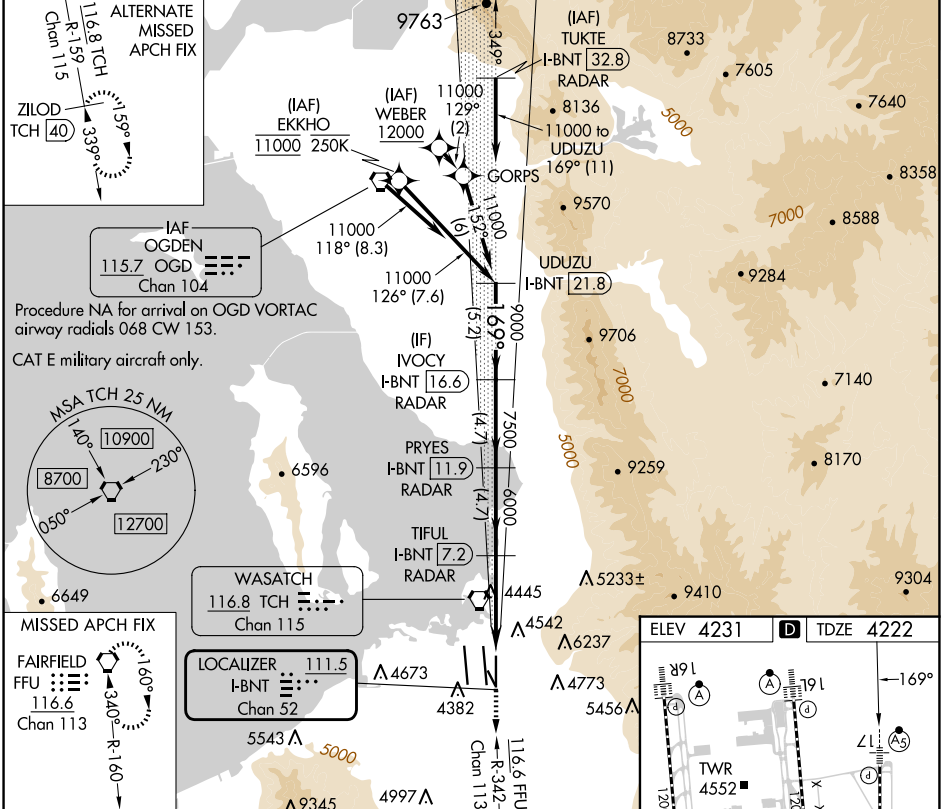


LOC/DME I-BNT	APP CRS	Rwy Idg TDZE	9596
111.5	169°R	4222	
Chan 52		Apt Elev	4231

ILS or LOC RWY 17

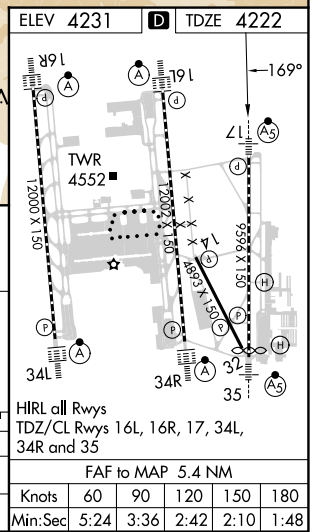
SALT LAKE CITY INTL (SLC)

From WEBER, EKKHO: RNAV 1-GPS required.		MALSR 	MISSED APPROACH: Climb to 10000 on FFU R-342 to FFU VORTAC and hold.		
DME or RADAR required.					
<p>▼ Simultaneous approach authorized. For inop ALS, increase S-ILS 17 Cat E visibility to RVR 4000, increase S-LOC 17 Cat C/D/E visibility to 1/4 SM.</p>					
D-ATIS	SALT LAKE CITY APP CON	SALT LAKE CITY TOWER	GND CON	CLNC DEL	CPDLC
124.75 125.625	125.7 284.6	118.3 257.8	121.9 348.6	127.3 379.975	



Procedure NA for arrival on OGD VORTAC airway radials 068 CW 153.
CAT E military aircraft only.

UDUZU I-BNT 21.8	IVOCY I-BNT 16.6	PRYES I-BNT 11.9	TIFUL I-BNT 7.2	FFU	
11000	9000	7500	6000	10000	
GS 3.00° TCH 55				FFU R-342	
5.2 NM	4.7 NM	4.7 NM	4.1 NM	1.3	
CATEGORY	A	B	C	D	E
S-ILS 17	4222/18 200 (200-1/2)				
S-LOC 17	4700/24	478 (500-1/2)	4700/50 478 (500-1)		



SW-4, 20 MAR 2025 to 17 APR 2025

SW-4, 20 MAR 2025 to 17 APR 2025