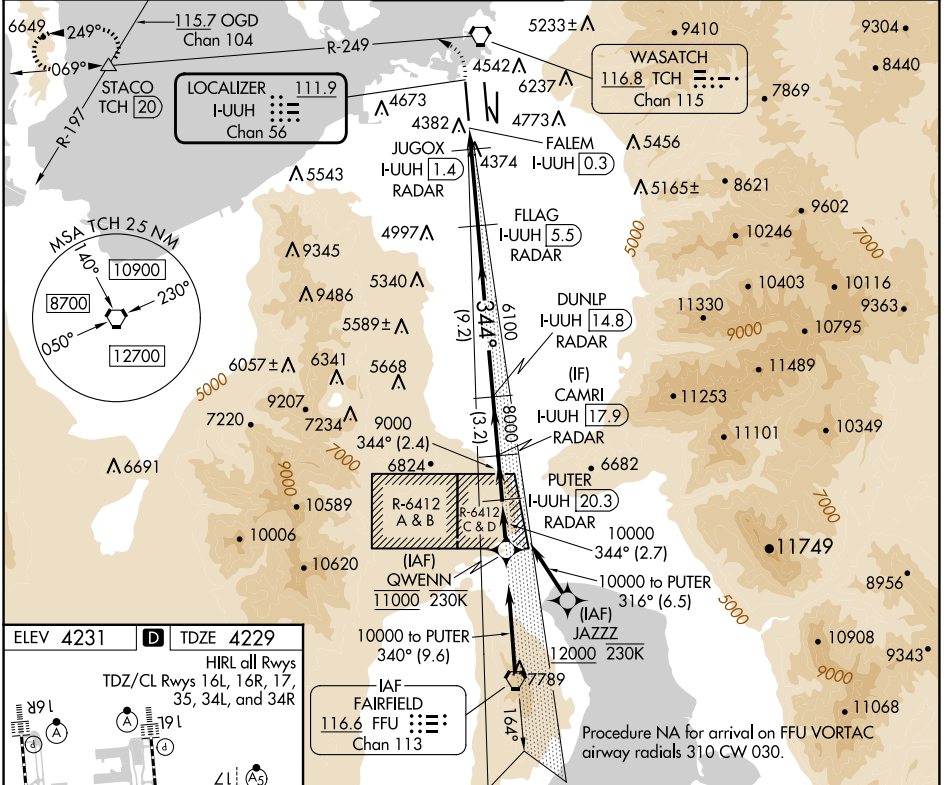


LOC/DME I-UUH <b>111.9</b> Chan 56	APP CRS <b>344°</b>	Rwy Idg TDZE <b>12000</b> <b>4229</b>	Apt Elev <b>4231</b>
--	------------------------	---	-------------------------

# ILS or LOC RWY 34L

SALT LAKE CITY INTL (SLC)

RNP APCH - GPS. From QWENN or JAZZZ.		ALSIF-2 	MISSED APPROACH: Climb to 4800 then climbing left turn to 8100 on TCH VORTAC R-249 to STACO INT/TCH 20 DME and hold.		
DME or RADAR required.					
<p>Simultaneous approach authorized. For inop ALS, increase S-LOC 34L Cat C/D visibility to RVR 6000.</p>					
D-ATIS <b>124.75 125.625</b>	SALT LAKE CITY APP CON <b>125.7 284.6</b>	SALT LAKE CITY TOWER <b>132.65 336.4</b>	GND CON <b>123.775 348.6</b>	CLNC DEL <b>127.3 379.975</b>	CPDLC



ELEV 4231	TDZE 4229
HIRL all Rwys TDZ/CL Rwys 16L, 16R, 17, 35, 34L, and 34R	
FAF to MAP 5.3 NM	
Knots	60 90 120 150 180
Min:Sec	5:18 3:32 2:39 2:07 1:46

4800	8100	STACO	VGSI and ILS glidepath not coincident (VGSI Angle 3.00/TCH 73).	PUTER I-UUH 20.3 RADAR
TCH R-249				CAMRI I-UUH 17.9 RADAR
				DUNLP I-UUH 14.8 RADAR
				JUGOX I-UUH 1.4 RADAR
				FLAG I-UUH 5.5 RADAR
				FALEM I-UUH 0.3
				10000
				GS 3.00° TCH 55
CATEGORY	A	B	C	D
S-ILS 34L	4429/18 200 (200-½)			
S-LOC 34L	4640/24 411 (500-½)		4640/40 411 (500-¾)	

SW-4, 20 MAR 2025 to 17 APR 2025

SW-4, 20 MAR 2025 to 17 APR 2025