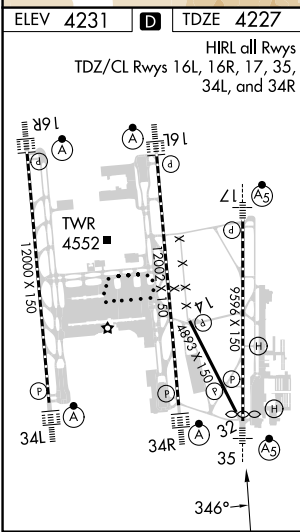


APP CRS	Rwy Idg	<b>9272</b>
<b>346°</b>	TDZE	<b>4227</b>
	Apt Elev	<b>4231</b>

# RNAV (RNP) Z RWY 35

SALT LAKE CITY INTL (SLC)

RNP AR APCH - GPS.		MALSR	MISSED APPROACH: Climb to 9000 direct KNOBY and on track 334° to OGD VORTAC and hold.		
<p>▼ For uncompensated Baro-VNAV systems, procedure NA below -10°C or above 54°C. For inop ALS, increase RNP 0.20 all Cats visibility to RVR 4500.</p>			D-ATIS	SALT LAKE CITY APP CON	SALT LAKE CITY TOWER
			<b>124.75 125.625</b>	<b>125.7 284.6</b>	<b>118.3 257.8</b>
			<b>121.9 348.6</b>	<b>127.3 379.975</b>	CPDLC



ELEV	<b>4231</b>	TDZE	<b>4227</b>
HIRL all Rwys			
TDZ/CL Rwys 16L, 16R, 17, 35, 34L, and 34R			
9000	KNOBY	OGD	VGSI and RNAV glidepath not coincident (VGSI Angle 3.00/TCH 74).
↑	tr 334°	⬠	HLMET
RW35		YICYU	PEDLE
346°		343°	344°
6100		9000	11000
5.7 NM		9.1 NM	3.1 NM
			GP 3.00°
			TCH 55

CATEGORY	A	B	C	D	E
RNP 0.20 DA		4502/24	275 (300-½)		
RNP 0.30 DA		4625/35	398 (400-¾)		

**AUTHORIZATION REQUIRED**

SW-4, 20 MAR 2025 to 17 APR 2025

SW-4, 20 MAR 2025 to 17 APR 2025