

WAAS CH 82338 W17A	APP CRS 169°	Rwy Idg TDZE Apt Elev	9596 4222 4231
----------------------------------------	------------------------	-----------------------------	-------------------------------------------


RNAV (GPS) Y RWY 17

SALT LAKE CITY INTL (SLC)

RNP APCH - GPS.

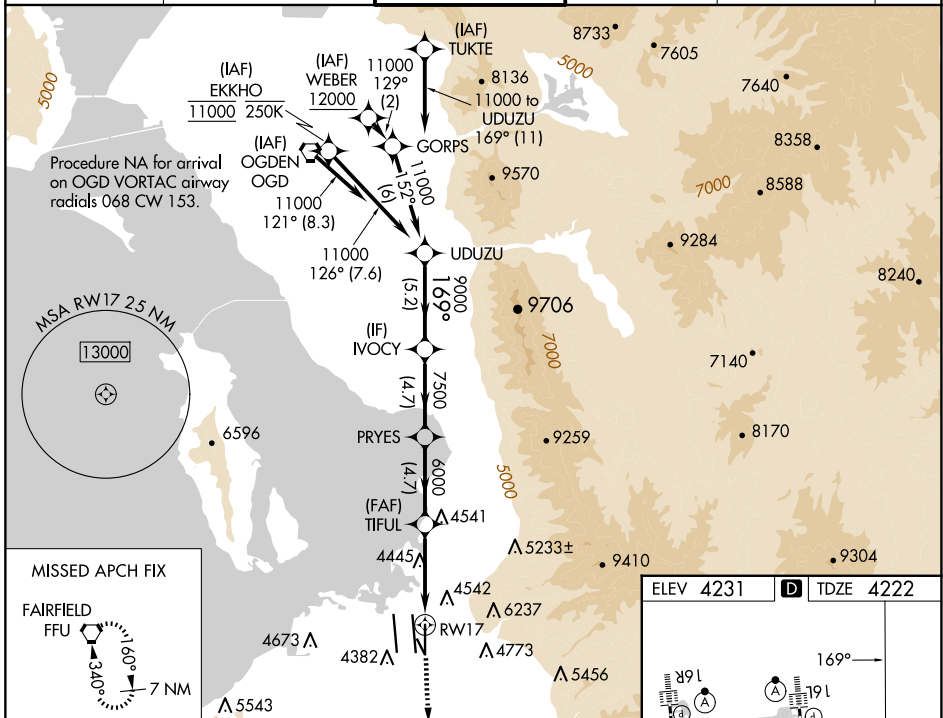
For uncompensated Baro-VNAV systems, LNAV/VNAV NA below -10°C or above 49°C. Simultaneous approach authorized. LNAV procedure NA during simultaneous operations. Use of FD or AP providing RNAV track guidance required during simultaneous operations. For inop ALS, increase LPV Cat E visibility to RVR 4000, LNAV/VNAV all Cats visibility to RVR 5500, and LNAV Cat C/D/E visibility to 1 3/8 SM.

MALSR

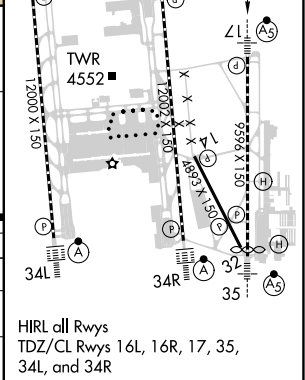


MISSED APPROACH: Climb to 4700 then climb to 10000 direct FFU VORTAC and hold.

D-ATIS 124.75 125.625	SALT LAKE CITY APP CON 125.7 284.6	SALT LAKE CITY TOWER 118.3 257.8	GND CON 121.9 348.6	CLNC DEL 127.3 379.975	CPDLC
---------------------------------	----------------------------------------------	--------------------------------------------	-------------------------------	----------------------------------	-------



UDUZU	IVOCY	PRYES	TIFUL	RWY 17	FFU
11000	9000	7500	6000	4700	10000
GP 3.00° TCH 55		VGSi and RNAV glidepath not coincident (VGSi Angle 3.00/TCH 73).		4700	10000
5.2 NM		4.7 NM		4.1 NM	
169°		169°		169°	
1.3 NM to RWY 17		1.3 NM to RWY 17		1.3 NM to RWY 17	
CATEGORY	A	B	C	D	E
LPV DA	4422/18		200 (200-1/2)		
LNAV/VNAV DA	4571/30		349 (400-5/8)		4574/30 352 (400-5/8)
LNAV MDA	4700/24		478 (500-1/2)		4700/50 478 (500-1)



SW-4, 20 MAR 2025 to 17 APR 2025

SW-4, 20 MAR 2025 to 17 APR 2025