

SEVVR THREE DEPARTURE
(SEVVR3:SEVVR) 17AUG17

SALT LAKE CITY, UTAH
SALT LAKE CITY INTL (SLC)

D-ATIS
124.75 125.625
CLNIC DEL
127.3 379.975
CPDLC
SALT LAKE CITY DEP CON
128.1 307.05

TAKEOFF MINIMUMS

Rwys 14, 16L/R, and 17: NA - Operational.
Rwy 32: 400-1 or standard with a minimum climb of 450' per NM to 7500.
Rwys 34L/R and 35: Aircraft assigned heading 263° CW through 322° standard with a minimum climb of 260' per NM to 7500. Aircraft assigned heading 323° CW through 343° standard with a minimum climb of 340' per NM to 7500.

NOTE: This is a RADAR vector departure to assigned route or fix.
NOTE: For turbojet and turboprop aircraft only.
NOTE: RADAR required.

(CONTINUED ON FOLLOWING PAGE)

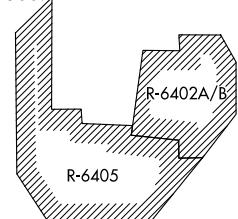
**TOP ALTITUDE:
10000**

WASATCH
116.8 TCH :---:
Chan 115
11500

DELTA
116.1 DTA :---:
Chan 108

COALDALE
117.7 OAL :---:
Chan 124

MILFORD
112.1 MLF :---:
Chan 58

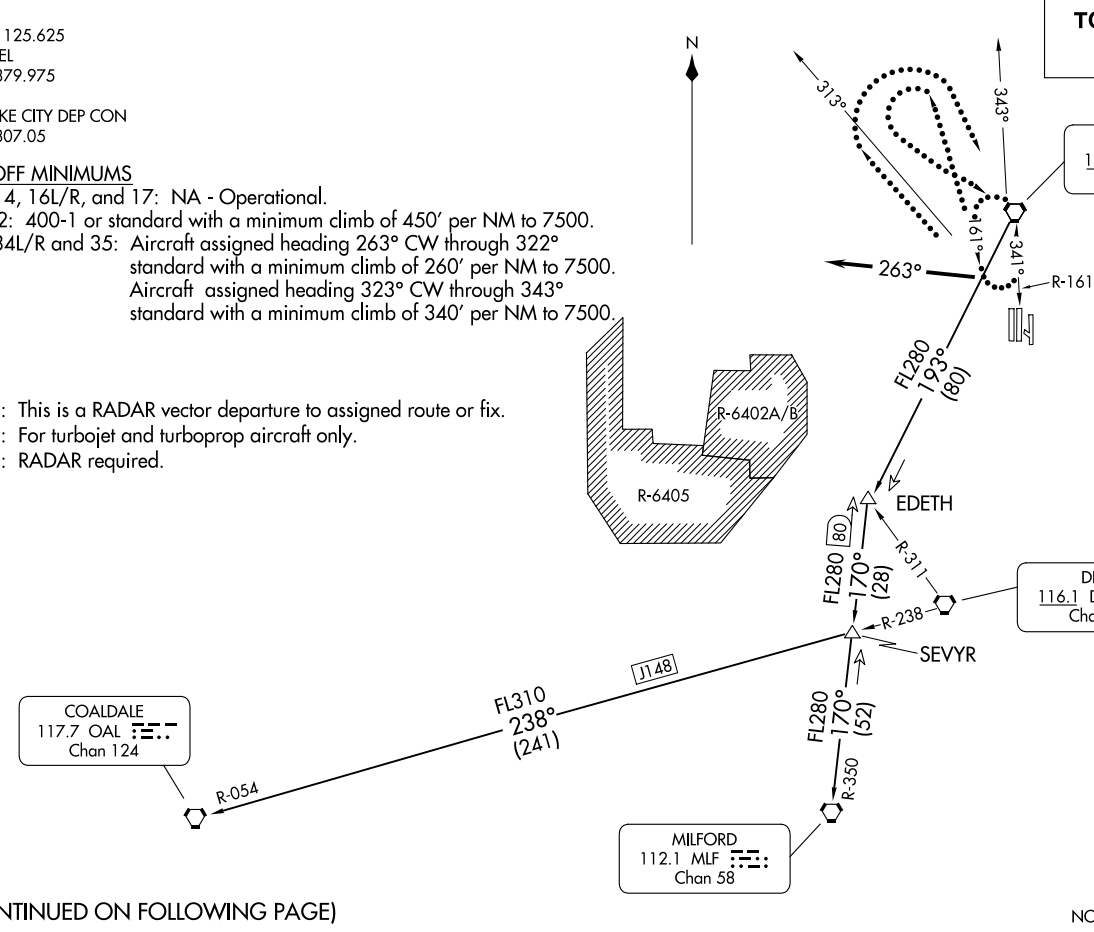


(SEVVR3:SEVVR) 24025
SEVVR THREE DEPARTURE

AL-365 (FAA)

SALT LAKE CITY INTL (SLC)
SALT LAKE CITY, UTAH

NOTE: Chart not to scale.





DEPARTURE ROUTE DESCRIPTION

TAKEOFF RUNWAYS 32, 34L/R, and 35: Climb on heading 263° or as assigned for RADAR vectors to assigned route or fix. Maintain 10000 or assigned lower altitude. Expect clearance to filed altitude 10 minutes after departure.

LOST COMMUNICATIONS: If not in contact with departure control within 1 minute after takeoff, fly assigned heading to 11000. Then, aircraft assigned heading 313° CW through 343°, execute a climbing left turn, all others execute a climbing right turn to TCH VORTAC. Continue climb in the TCH VORTAC holding pattern to cross TCH VORTAC at or above 11500. Proceed on course.

COALDALE TRANSITION (SEVYR3.OAL): From over TCH VORTAC on TCH R-193 and MLF R-350 to SEVYR, then on DTA R-238 and OAL R-054 to OAL VORTAC.

MILFORD TRANSITION (SEVYR3.MLF): From over TCH VORTAC on TCH R-193 and MLF R-350 to MLF VORTAC.

SW-4, 20 MAR 2025 to 17 APR 2025

SW-4, 20 MAR 2025 to 17 APR 2025