

SPANE EIGHT ARRIVAL

AL-365 (FAA)

SALT LAKE CITY INTL (SLC)
SALT LAKE CITY, UTAH

SW-4, 20 MAR 2025 to 17 APR 2025

ARRIVAL ROUTE DESCRIPTION

HELPR TRANSITION (HELPR.SPANE8): From over HELPR on FFU R-100 to SPANE, thence

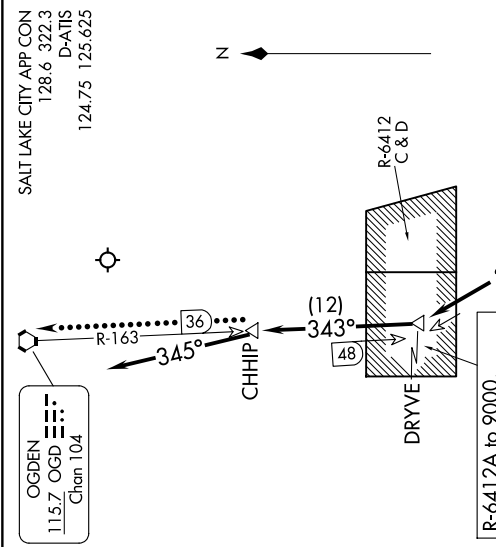
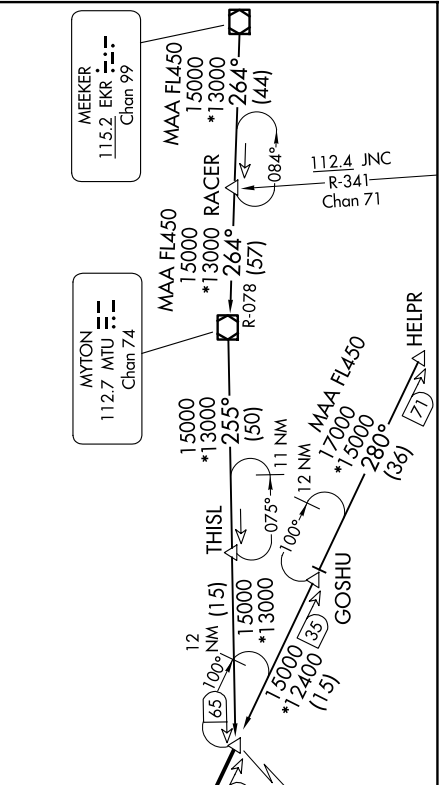
MEEKER TRANSITION (EKR.SPANE8): From over EKR VOR/DME on EKR R-264 to RACER, then on EKR R-264 and MTU R-078 to MTU VOR/DME, then on MTU R-255 to SPANE, thence

LANDING NORTH: From SPANE on FFU R-100 to BOAGY, then to FFU VORTAC. Expect ILS RWY 34R approach.

LANDING SOUTH: From SPANE on FFU R-100 to BOAGY, then to FFU VORTAC, then on FFU R-314 to DRYVE, then on OGD R-163 to CHHIP. After CHHIP, fly heading 345° for vectors to ILS or Visual RWY 16R approach.

LOST COMMUNICATIONS

LANDING SOUTH: In the event of lost communications, at CHHIP proceed direct OGD VORTAC. Maintain 12000 until OGD VORTAC.



VERTICAL NAVIGATION PLANNING INFORMATION

PROP/TURBOPROP

LANDING NORTH: Expect 16000
LANDING SOUTH: Expect 17000

JET

LANDING NORTH: Expect 16000
LANDING SOUTH: Expect FL190

NOTE: DME required.

NOTE: Chart not to scale.

SPANE EIGHT ARRIVAL

SALT LAKE CITY, UTAH
SALT LAKE CITY INTL (SLC)

SW-4, 20 MAR 2025 to 17 APR 2025