

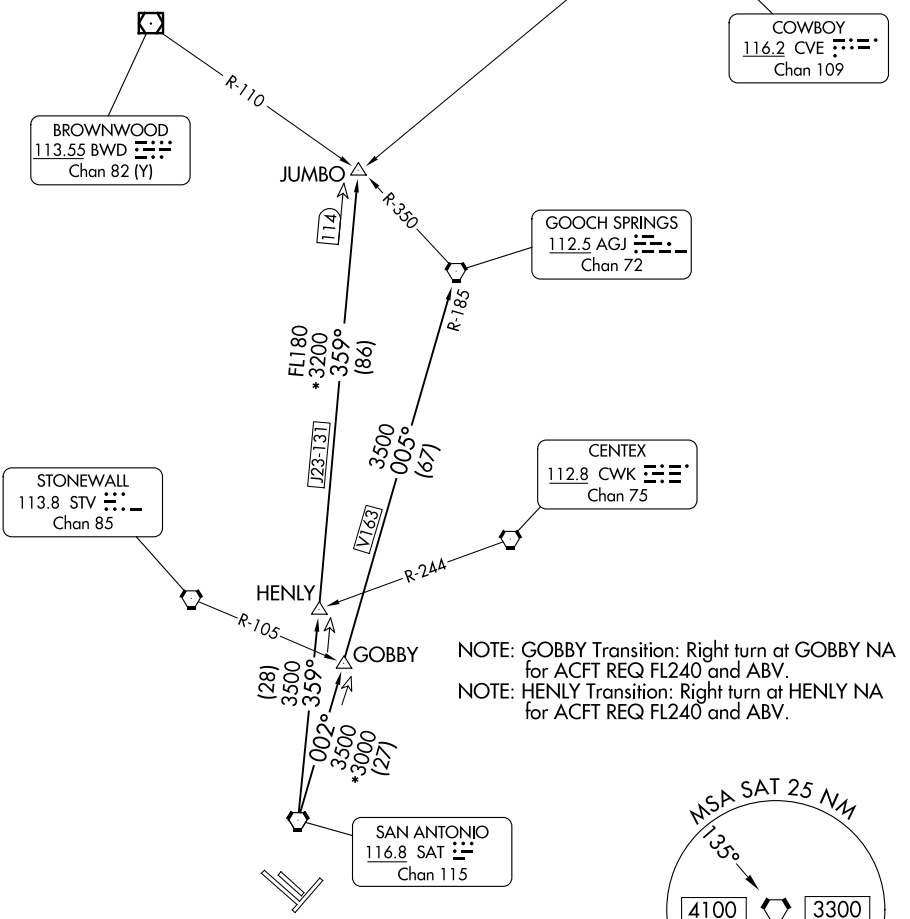
ALAMO FOUR DEPARTURE

TOP ALTITUDE:
5000

RADAR required.

SAN ANTONIO DEP CON
125.1 307.0 (Rwys 04/22/31)
127.1 269.1 (Rwy 13)
D-ATIS
118.9
CLNC DEL
126.7
CPDLC
GND CON
121.9 348.6
SAN ANTONIO TOWER
119.8 257.8

TAKEOFF MINIMUMS
Rwys 4, 13L/R, 22, 31L/R: Standard.



SC-3, 20 MAR 2025 to 17 APR 2025

SC-3, 20 MAR 2025 to 17 APR 2025

(CONTINUED ON FOLLOWING PAGE)

NOTE: Chart not to scale.

ALAMO FOUR DEPARTURE

ALAMO FOUR DEPARTURE



DEPARTURE ROUTE DESCRIPTION

TAKEOFF ALL RUNWAYS: Climb on assigned heading for RADAR vectors to SAT VORTAC, then on transition/route. Maintain 5000. Expect filed altitude 10 minutes after departure.

GOBBY TRANSITION (ALAMO4.GOBBY): From over SAT VORTAC on SAT R-002 to GOBBY.

GOOCH SPRINGS TRANSITION (ALAMO4.AGJ): From over SAT VORTAC on SAT R-002 to GOBBY, then on SAT R-002 and AGJ R-185 to AGJ VORTAC.

HENLY TRANSITION (ALAMO4.HENLY): From over SAT VORTAC on SAT R-359 to HENLY.

JUMBO TRANSITION (ALAMO4.JUMBO): From over SAT VORTAC on SAT R-359 to JUMBO.

SC-3, 20 MAR 2025 to 17 APR 2025

SC-3, 20 MAR 2025 to 17 APR 2025