

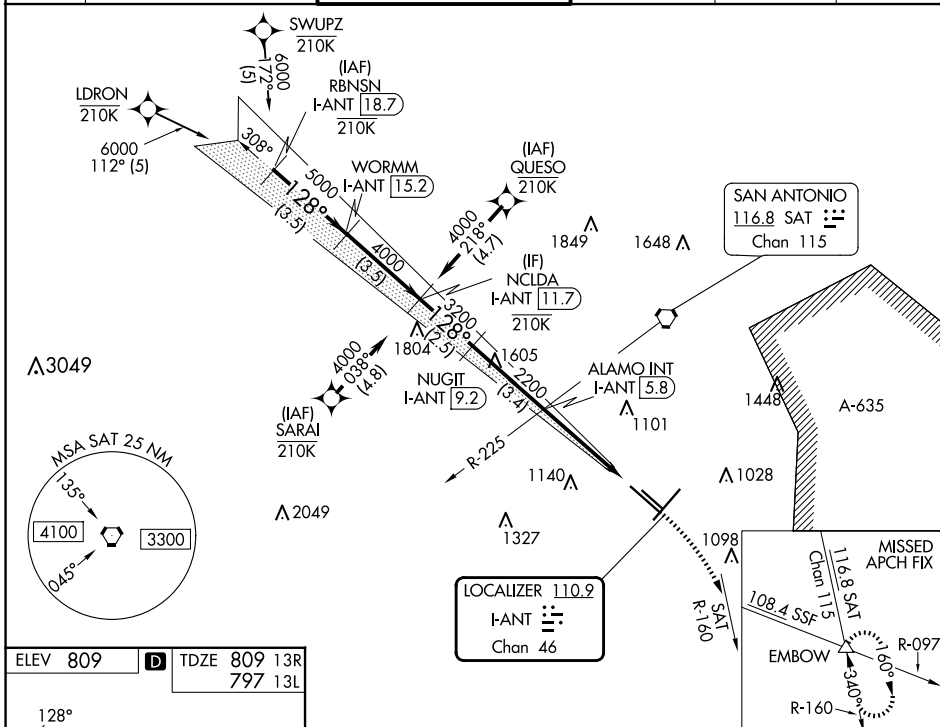
LOC/DME I-ANT 110.9 Chan 46	APP CRS 128°	Rwy 13R Idg 8502 TDZE 809 Apt Elev 809	Rwy 13L Idg 5519 TDZE 797 Apt Elev 809
---	------------------------	---	---

ILS or LOC RWY 13R

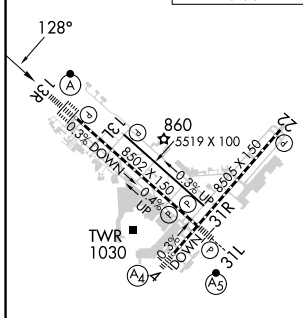
SAN ANTONIO INTL (SAT)

RNP APCH-GPS. From LDRON, SWUPZ, SARAI, QUESO.		ALSIF-2 A	MISSED APPROACH: Climb to 3100 on heading 128° and SAT VORTAC R-160 to EMBOW INT and hold.
RNAV 1-GPS or RADAR required for procedure entry. DME required.			
Circling NA northwest of Rws 4 and 13R.			

D-ATIS 118.9	SAN ANTONIO APP CON 125.1 307.0	SAN ANTONIO TOWER 119.8 257.8	GND CON 121.9 348.6	CLNC DEL 126.7	CPDLC
------------------------	---	---	-------------------------------	--------------------------	-------



ELEV 809	D	TDZE 809 13R 797 13L
-----------------	----------	---------------------------------------



TDZ/CL Rwy 13R
REL Rws 13L, 22 and 31R
HIRL Rws 4-22 and 13R-31L
MIRL Rwy 13L-31R

FAF to MAP 4.2 NM

Knots	60	90	120	150	180
Min:Sec	4:12	2:48	2:06	1:41	1:24

VGSI and ILS glidepath not coincident (VGSI Angle 3.00/TCH 75).

NCLDA I-ANT 11.7 4000	NUGIT I-ANT 9.2 3200	ALAMO INT I-ANT 5.8 2200	I-ANT 3.4 2200	I-ANT 1.6 2200
GS 3.00° TCH 58				
CATEGORY	A			
S-ILS 13R	1009/18 200 (200-1/2)			
S-LOC 13R	1460/24	651 (700-1/2)	1460-1 3/8	651 (700-1 3/8)
SIDESTEP 13L	1480-1	683 (700-1)	1480-2 683 (700-2)	1480-2 1/4 683 (700-2 1/4)
CIRCLING	1480-1	671 (700-1)	1480-2 671 (700-2)	1520-2 1/4 711 (800-2 1/4)

SC-3, 20 MAR 2025 to 17 APR 2025

SC-3, 20 MAR 2025 to 17 APR 2025