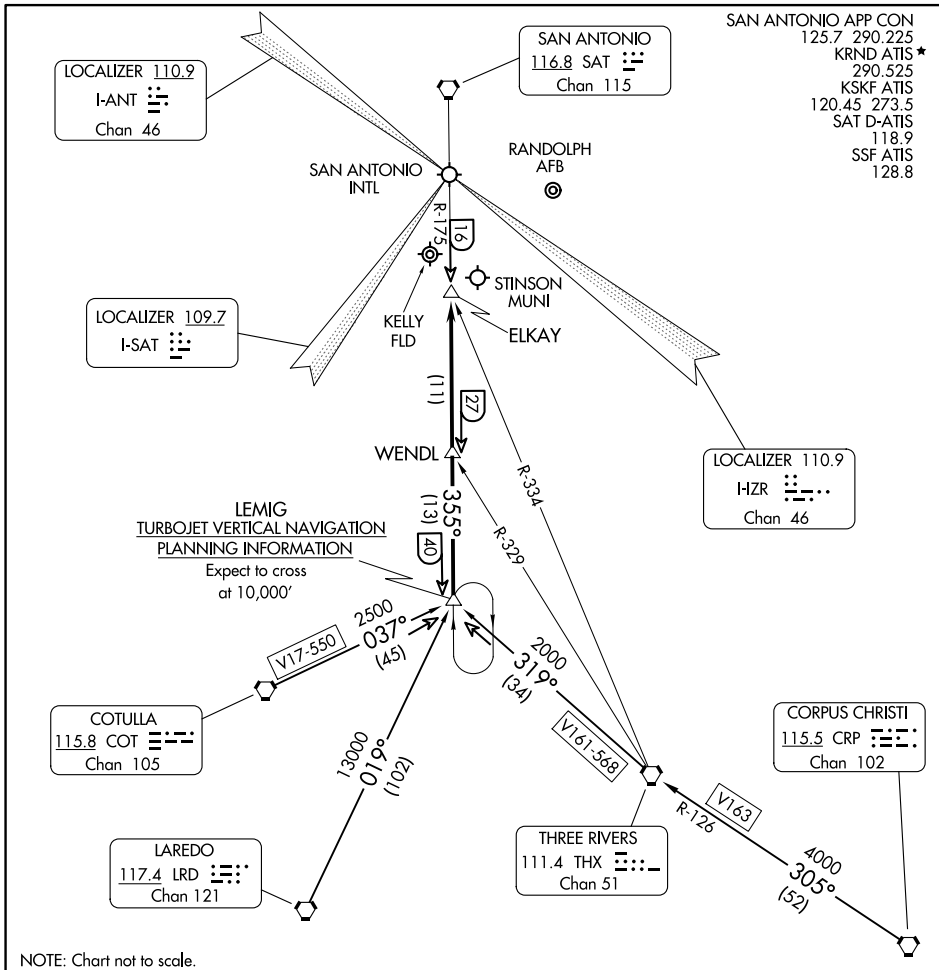


LEMIG ONE ARRIVAL

SAN ANTONIO, TEXAS



SC-3, 20 MAR 2025 to 17 APR 2025

SC-3, 20 MAR 2025 to 17 APR 2025

ARRIVAL ROUTE DESCRIPTION

CORPUS CHRISTI TRANSITION (CRP.LEMIG1): From over CRP VORTAC via CRP R-305 and THX R-126 to THX VORTAC, then via THX R-319 to LEMIG INT. Thence . . .

COTULLA TRANSITION (COT.LEMIG1): From over COT VORTAC via COT R-037 to LEMIG INT. Thence . . .

LAREDO TRANSITION (LRD.LEMIG1): From over LRD VORTAC via LRD R-019 to LEMIG INT. Thence . . .

THREE RIVERS TRANSITION (THX.LEMIG1): From over THX VORTAC via THX R-319 to LEMIG INT. Thence . . .

. . . **ALL AIRPORTS:** From over LEMIG INT via SAT R-175 to ELKAY INT. Expect radar vectors to final approach course.

LEMIG ONE ARRIVAL

SAN ANTONIO, TEXAS