

| | | |
|-------------|----------|-------------|
| APP CRS | Rwy Idg | 8505 |
| 217° | TDZE | 770 |
| | Apt Elev | 809 |

RNAV (RNP) Z RWY 22

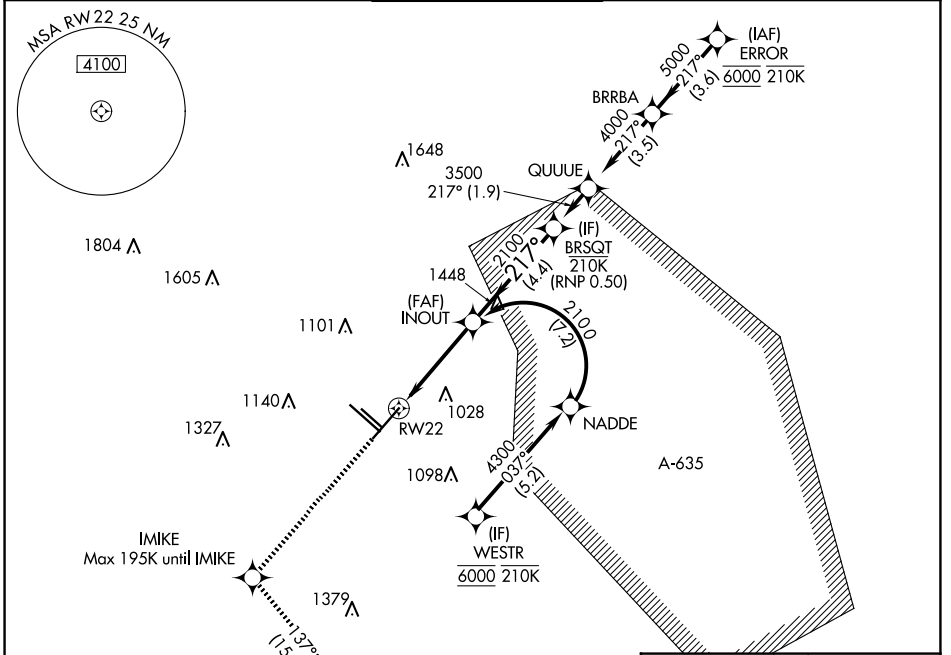
SAN ANTONIO INTL (SAT)

RNP AR APCH - GPS. Authorization required.
From BRSQT: Min RNP 0.50. From NADDE: RF.

MISSED APPROACH: (Do not exceed 195K until IMIKE) Climb to 3100 direct IMIKE and on track 137° to EMBOW and hold.

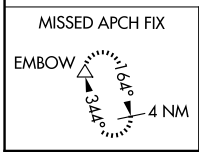
▼ For uncompensated Baro-VNAV systems, procedure NA below -5°C or above 54°C.

| | | | | | |
|--------------|---------------------|--------------------|--------------------|--------------|-------|
| D-ATIS | SAN ANTONIO APP CON | SAN ANTONIO TOWER | GND CON | CLNC DEL | CPDLC |
| 118.9 | 125.1 307.0 | 119.8 257.8 | 121.9 348.6 | 126.7 | |

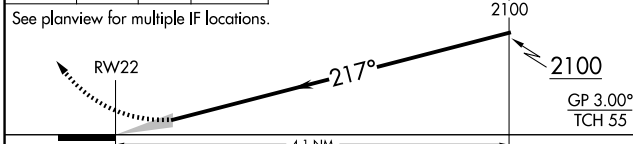


SC-3, 20 MAR 2025 to 17 APR 2025

SC-3, 20 MAR 2025 to 17 APR 2025



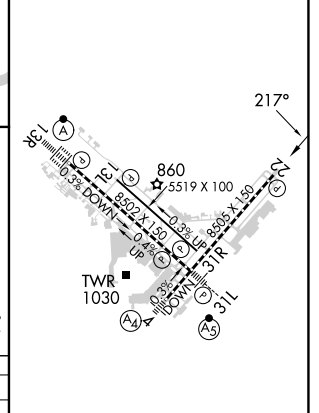
| | | | |
|------|-------|---------|--|
| 3100 | IMIKE | EMBOW | VGSI and RNAV glidepath not coincident (VGSI Angle 3.00/TCH 85). |
| ↑ | ✧ | tr 137° | |



| CATEGORY | A | B | C | D |
|-------------|---|-----------|----------------|---|
| RNP 0.15 DA | | 1068-7/8 | 298 (300-7/8) | |
| RNP 0.30 DA | | 1220-13/8 | 450 (500-13/8) | |

AUTHORIZATION REQUIRED

| | | | | |
|------|-----|---|------|-----|
| ELEV | 809 | D | TDZE | 770 |
|------|-----|---|------|-----|



TDZ/CL Rwy 13R
REIL Rwys 13L, 22 and 31R
HIRL Rwys 4-22 and 13R-31L
MIRL Rwy 13L-31R