

(TJANO1.TJANO) 24081

AL-369 (FAA)

SAN ANTONIO INTL (SAT)
SAN ANTONIO, TEXAS

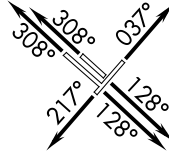
TJANO ONE DEPARTURE (RNAV)

SAN ANTONIO DEP CON
125.7 290.225 (Rwys 13L/R, 22, 31L/R)
127.1 269.1 (Rwy 4)
D-ATIS
118.9
CLNC DEL
126.7
CPDLC
GND CON
121.9 348.6
SAN ANTONIO TOWER
119.8 257.8

RNAV 1 - DME/DME IRU or GPS.

RADAR required.

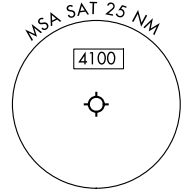
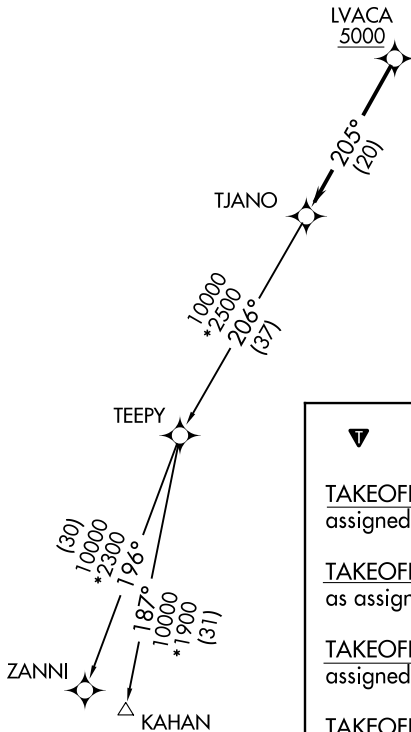
**TOP ALTITUDE:
5000**



TAKEOFF MINIMUMS

Rwys 4, 13L/R, 22, 31L/R: Standard.

NOTE: For non-GPS equipped aircraft,
THX and SAT DME must be operational.



DEPARTURE ROUTE DESCRIPTION

TAKEOFF RUNWAY 4: Climb on heading 037° or as assigned by ATC, for vectors to LVACA, thence. . .

TAKEOFF RUNWAY 13L/R: Climb on heading 128° or as assigned by ATC, for vectors to LVACA, thence. . .

TAKEOFF RUNWAY 22: Climb on heading 217° or as assigned by ATC, for vectors to LVACA, thence. . .

TAKEOFF RUNWAY 31L/R: Climb on heading 308° or as assigned by ATC, for vectors to LVACA, thence. . .

...on track 205° to TJANO, then on Transition. Maintain 5000.

KAHAN TRANSITION (TJANO1.KAHAN)
ZANNI TRANSITION (TJANO1.ZANNI)

Note: Chart not to scale.

SC-3, 20 MAR 2025 to 17 APR 2025

SC-3, 20 MAR 2025 to 17 APR 2025

TJANO ONE DEPARTURE (RNAV)
(TJANO1.TJANO) 25JAN24

SAN ANTONIO, TEXAS
SAN ANTONIO INTL (SAT)