

SW-3, 20 MAR 2025 to 17 APR 2025

TOP ALTITUDE:
6000

NOTE: RADAR required.

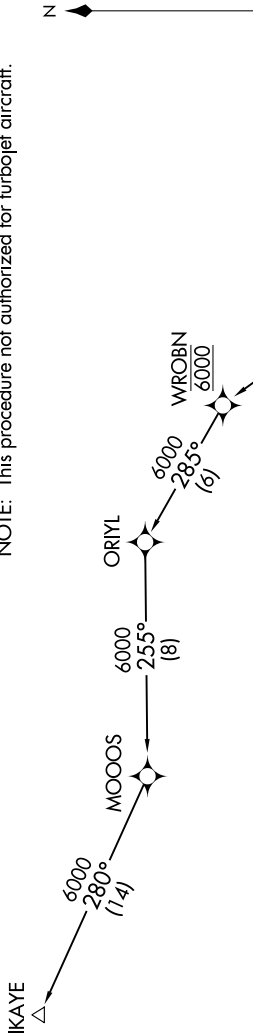
NOTE: RNAV 1.

NOTE: DME/DME/IRU or GPS required.

NOTE: This procedure not authorized for turbojet aircraft.

JOHN WAYNE TOWER*
126.8 343.625
SOCAL DEP CON
125.35 316.125

D-ATIS
126.0
CLNC DEL
118.0
CPDLC
GND CON
120.8



DEPARTURE ROUTE DESCRIPTION

TAKEOFF RUNWAY 2L: Climb heading 014° to 560, then left turn on heading 240° or as assigned by ATC for vectors to PIJIN, cross PIJIN at or above 4000, then on track 290° to cross HAWWC at or above 5000, thence . . .

TAKEOFF RUNWAY 20R: Climb heading 194°, then on heading 210° or as assigned by ATC for vectors to PIJIN, cross PIJIN at or above 4000, then on track 290° to cross HAWWC at or above 5000, thence . . .

. . . on (transition). Maintain 6000. Expect higher altitude 10 minutes after departure.

IKAYE TRANSITION (HAWWC3.IKAYE)

TAKEOFF MINIMUMS
Rwys 2R, 20L: NA-ATC.
Rwy 2L: Standard.
Rwy 20R: Standard with minimum climb of 270' per NM to 1300.

NOTE: Chart not to scale.

SW-3, 20 MAR 2025 to 17 APR 2025