


LOC/DME I-SUX 109.3 Chan 30	APP CRS 313°	Rwy Idg TDZE Apt Elev	9002 1096 1098
---	------------------------	-----------------------------	---

ILS or LOC RWY 31

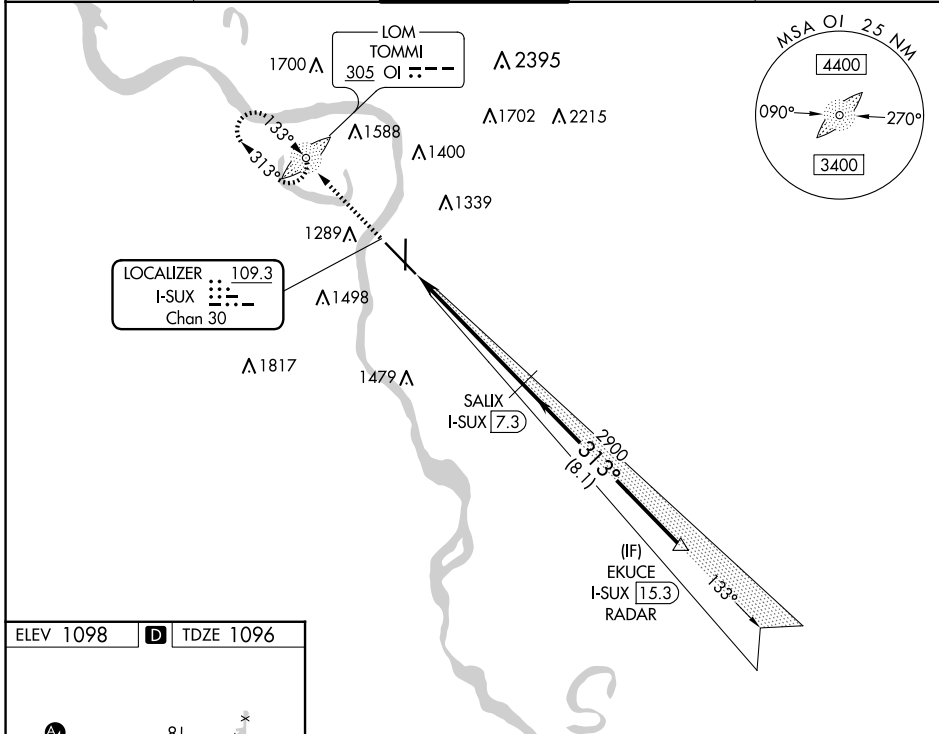
SIoux GATEWAY/BRIG GENERAL BUD DAY FLD (SUX)

ADF required. DME required for LOC only. RADAR required for procedure entry.

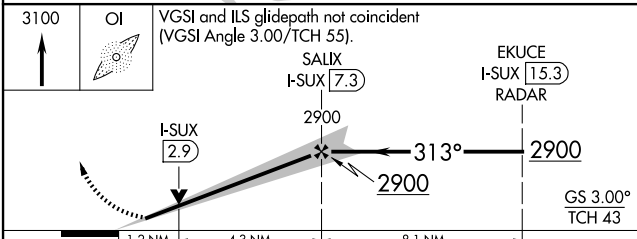
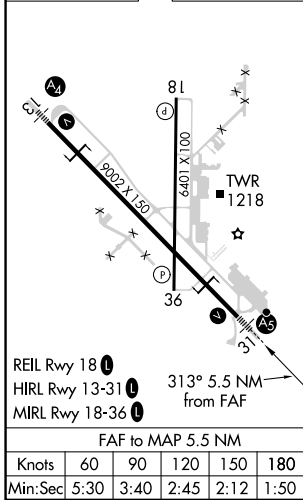
▼ Autopilot coupled approach NA below 2025 MSL. For inop ALS, increase S-ILS 31 Cat E visibility to RVR 4000 and S-LOC 31 Cat E to 1 1/2 SM.
*RVR 1800 authorized with use of FD or AP or HUD to DA.

MALSR  MISSED APPROACH: Climb to 3100 direct TOMMI LOM and hold, continue climb-in-hold to 3100.

ATIS 119.45 270.8	SIoux CITY APP CON * 124.6 307.0	SIoux CITY TOWER * 118.7 (CTAF) 0 254.3	GND CON 121.9 348.6	UNICOM 122.95
-----------------------------	--	---	-------------------------------	-------------------------



ELEV 1098	D	TDZE 1096
-----------	----------	-----------



CATEGORY	A	B	C	D	E
S-ILS 31*	1296/24 200 (200-1/2)				
S-LOC 31	1540/24	444 (500-1/2)	1540/45 444 (500-3/8)		
C CIRCLING	1640-1 542 (600-1)	1700-1 602 (700-1)	1700-1 1/4 602 (700-1 1/4)	1860-2 1/2 762 (800-2 1/2)	1940-3 842 (900-3)

ILS or LOC RWY 31

NC-3, 20 MAR 2025 to 17 APR 2025

NC-3, 20 MAR 2025 to 17 APR 2025