


LOC I-JOU <b>111.1</b>	APP CRS <b>210°</b>	Rwy Idg <b>8999</b> TDZE <b>1430</b> Apt Elev <b>1430</b>
---------------------------	------------------------	---

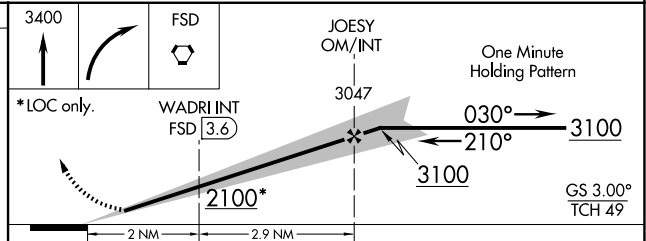
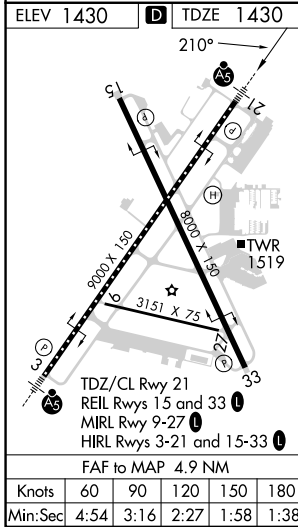
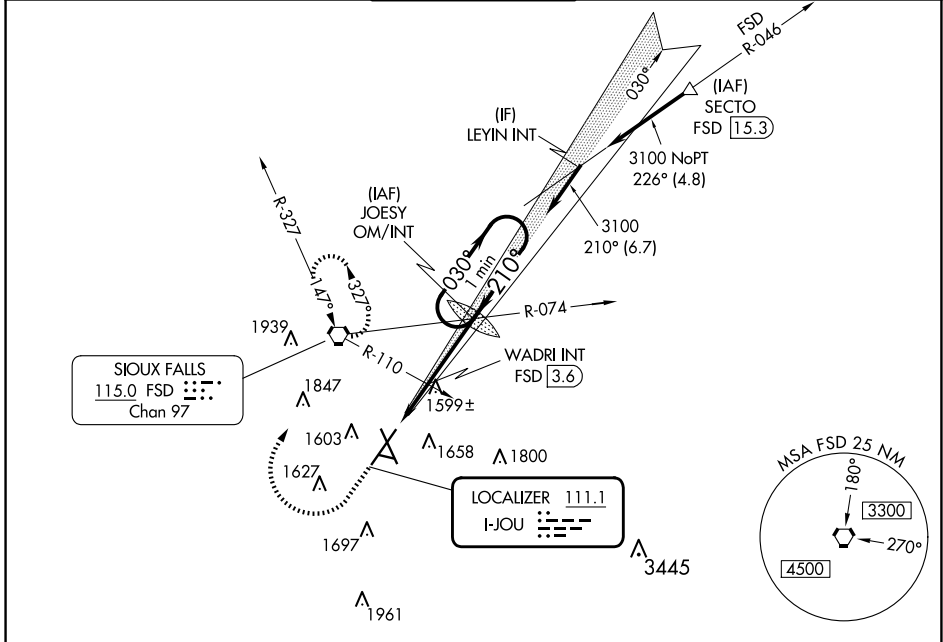
# ILS or LOC RWY 21

JOE FOSS FLD (FSD)

**ASR** -31°C For inoperative MALSR increase S-ILS all Cats visibility to ¾ mile, increase S-LOC 21 Cat C/D visibility to 1½ mile. When using WADRI FIX minimums, increase S-LOC 21 Cat C/D visibility to 1 mile.

**MALSR**  MISSED APPROACH: Climb to 3400 then right turn direct FSD VORTAC and hold.

ATIS <b>126.6</b>	SIoux FALLS APP CON * <b>125.8 284.725</b>	SIoux FALLS TOWER * <b>118.3 (CTAF) 0 257.8</b>	GND CON <b>121.9 348.6</b>	UNICOM <b>122.95</b>
----------------------	---	--	-------------------------------	-------------------------



CATEGORY	A	B	C	D
S-ILS 21	1630/18 200 (200-½)			
S-LOC 21	2100/24	670 (700-½)	2100-1½	670 (700-1½)
<b>C</b> CIRCLING	2100-1	670 (700-1)	2100-1¾ 670 (700-1¾)	2200-2½ 770 (800-2½)
WADRI FIX MINIMUMS				
S-LOC 21	1800/24	370 (400-½)	1800/35	370 (400-¾)
<b>C</b> CIRCLING	1960-1 530 (600-1)	1980-1 550 (600-1)	2060-1¾ 630 (700-1¾)	2200-2½ 770 (800-2½)

NC-1, 20 MAR 2025 to 17 APR 2025

NC-1, 20 MAR 2025 to 17 APR 2025