

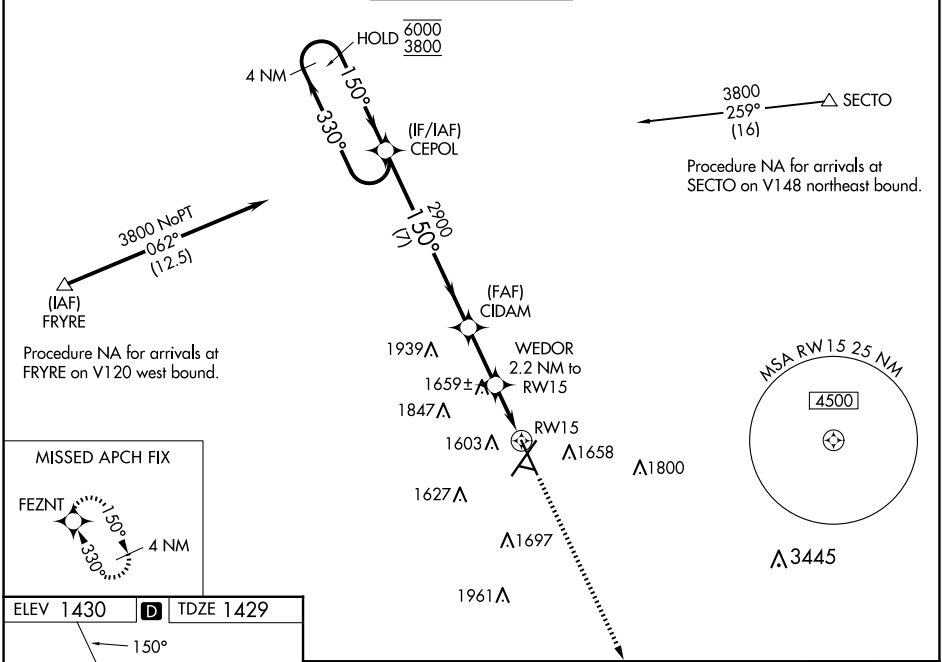
WAAS CH 90235 W15A	APP CRS 150°	Rwy Idg TDZE Apt Elev	8000 1429 1430
--	------------------------	-----------------------------	---

RNAV (GPS) RWY 15

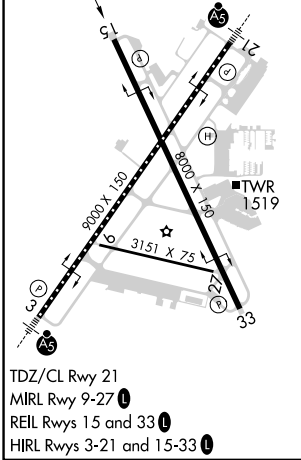
JOE FOSS FLD (FSD)

RNP APCH-GPS.		MISSED APPROACH: Climb to 3800 direct FEZNT and hold.
<p>▽ Rwy 15 helicopter visibility reduction below ¾ SM NA. For uncompensated Baro-VNAV systems, LNAV/VNAV NA below -21°C or above 54°C.</p> <p>ASR -31°C</p>		

ATIS 126.6	SIoux FALLS APP CON * 125.8 284.725	SIoux FALLS TOWER * 118.3 (CTAF) 257.8	GND CON 121.9 348.6	UNICOM 122.95
----------------------	---	---	-------------------------------	-------------------------



ELEV 1430	D	TDZE 1429
-----------	----------	-----------



4 NM Holding Pattern CEPOL 6000 ← 330° 3800 150° → GP 3.00° TCH 48	CEPOL 4 NM Holding Pattern	CIDAM 2900 150°	WEDOR 2.2 NM to RW15 1.4 NM to RW15 RW15	3800	FEZNT
				7 NM 2.3 NM 0.8 1.4 NM	
CATEGORY	A	B	C	D	
LPV DA		1839-1½	410 (500-1½)		
LNAV/VNAV DA		1909-1¾	480 (500-1¾)		
LNAV MDA	1920-1	491 (500-1)	1920-1¾	491 (500-1¾)	
C CIRCLING	1960-1 530 (600-1)	1980-1 550 (600-1)	2060-1¾ 630 (700-1¾)	2200-2½ 770 (800-2½)	

NC-1, 20 MAR 2025 to 17 APR 2025

NC-1, 20 MAR 2025 to 17 APR 2025