

SPOKANE, WASHINGTON

AL-402 (FAA)

23334

VORTAC GEG 115.5 Chan 102	APP CRS 046°	Rwy Idg TDZE 1949 Apt Elev 1957
---	------------------------	---

VOR RWY 4L

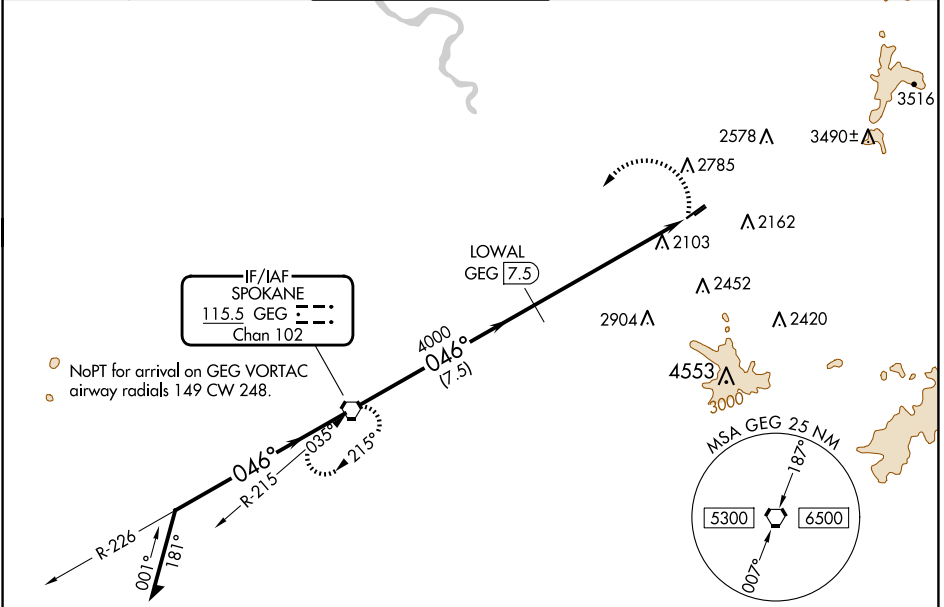
FELTS FLD (S'F'F)

DME required.

⚠ Circling NA northwest of Rwy 4L-22R. Circling Rwy 22L NA at night. Rwy 4L helicopter visibility reduction below ¾ SM NA.
❄ -16°C

MISSED APPROACH: Climbing left turn to 4500 direct GEG VORTAC and hold.

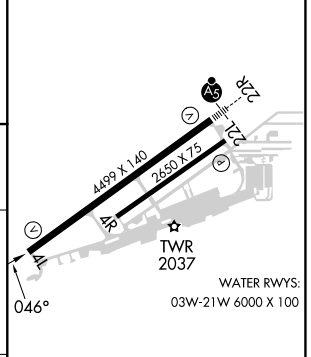
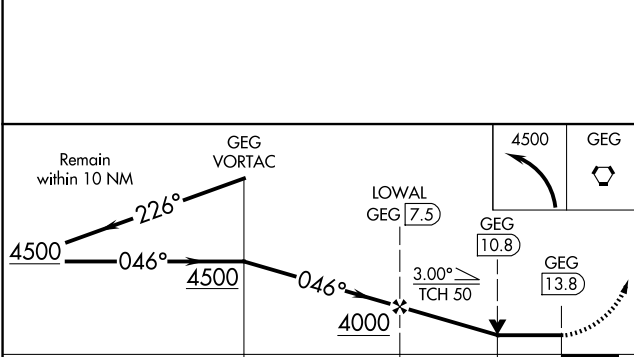
ATIS 120.55	SPOKANE APP CON 133.35 263.0	FELTS TOWER * 132.5 (CTAF) 239.025	GND CON 121.7	CLNC DEL 121.7	UNICOM 122.95
-----------------------	--	--	-------------------------	--------------------------	-------------------------



NW-1, 20 MAR 2025 to 17 APR 2025

NW-1, 20 MAR 2025 to 17 APR 2025

ELEV 1957	D TDZE 1949
-----------	--------------------



CATEGORY	A	B	C	D
S-4L	2960-1¼ 1011 (1100-1¼)	2960-1½ 1011 (1100-1½)	2960-3 1011 (1100-3)	
C CIRCLING	2960-1¼ 1003 (1100-1¼)	2960-1½ 1003 (1100-1½)	3100-3 1143 (1200-3)	3360-3 1403 (1500-3)

REIL Rwy 4L **Ⓛ**
 MRL Rwy 4L-22R **Ⓛ**

SPOKANE, WASHINGTON
 Amdt 6B 15JUN23

47°41'N-117°19'W

FELTS FLD (S'F'F) VOR RWY 4L