

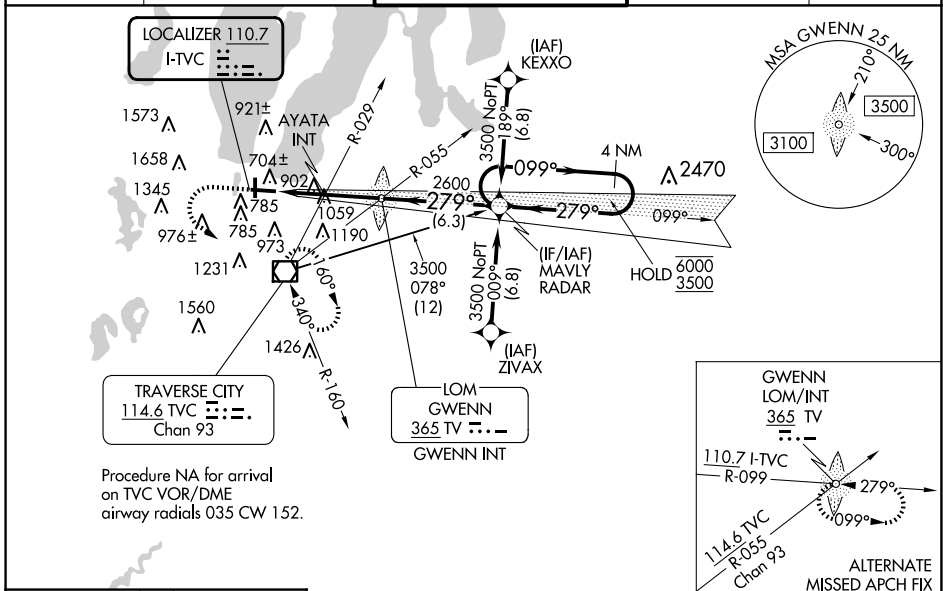
LOC I-TVC 110.7	APP CRS 279°	Rwy Idg TDZE Apt Elev	7016 616 624
---------------------------	------------------------	-----------------------------	---

ILS or LOC RWY 28

CHERRY CAPITAL (TVC)

RNP APCH - GPS. Aircraft not GPS equipped - RADAR required for procedure entry.	MALSR 	MISSED APPROACH: Climb to 1100 then climbing left turn to 3000 direct TVC VOR/DME and hold, continue climb-in-hold to 3000.
 S-LOC 28 minimums: For inop ALS, increase S-LOC 28 Cats C and D visibility to 2 1/2 SM. AYATA FIX minimums: For inop ALS, increase S-LOC 28 Cats C and D visibility to 2 SM.		

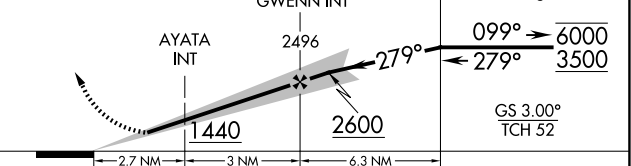
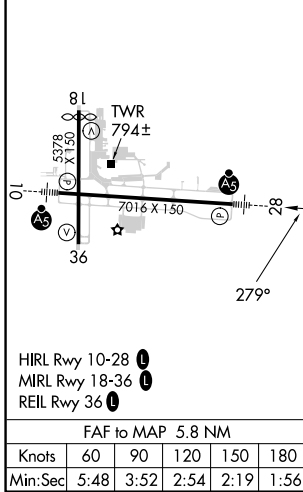
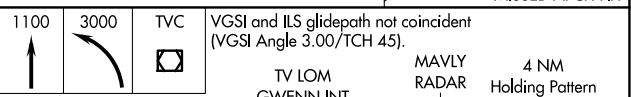
ATIS 119.175	MINNEAPOLIS CENTER 132.9 338.3	TRAVERSE CITY TOWER * 124.2 (CTAF) 348.6	GND CON 121.8 348.6	UNICOM 122.95
------------------------	--	--	-------------------------------	-------------------------



EC-1, 20 MAR 2025 to 17 APR 2025

EC-1, 20 MAR 2025 to 17 APR 2025

ELEV 624	D	TDZE 616
----------	----------	----------



CATEGORY	A	B	C	D
S-ILS 28	816-1/2 200 (200-1/2)			
S-LOC 28	1440-1/2 824 (900-1/2)	1440-3/4 824 (900-3/4)	1440-1 7/8	824 (900-1 7/8)
C CIRCLING	1440-1 1/4	816 (900-1 1/4)	1440-2 1/2 816 (900-2 1/2)	1720-3 1096 (1100-3)
AYATA FIX MINIMUMS (DUAL VOR RECEIVERS REQUIRED)				
S-LOC 28	1320-1/2	704 (700-1/2)	1320-1 5/8	704 (700-1 5/8)
C CIRCLING	1320-1	696 (700-1)	1420-2 1/4 796 (800-2 1/4)	1720-3 1096 (1100-3)