

# HI-TACAN Z RWY 13

TACAN DMA Chan <b>123</b>	APCH CRS <b>133°</b>	Rwy Idg <b>13,645</b> TDZE <b>2615</b> Arprt Elev <b>2704</b>
------------------------------	-------------------------	---

[USAF]

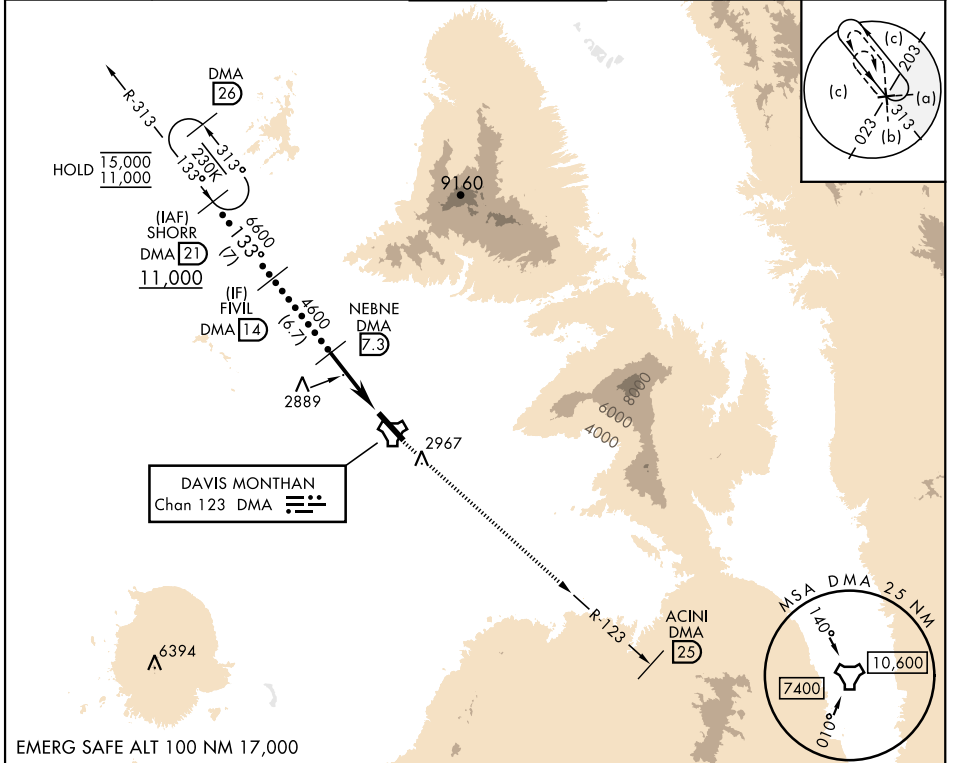
DAVIS-MONTHAN AFB (KDMA)

RNAV or RADAR required.

\*Circling not authorized SW of Rwy 13-31.

MISSED APPROACH: Climbing to 8000 intercept DMA TACAN R-123 to ACINI. Expect RADAR vectors.

ATIS★ <b>132.3 270.1</b>	TUCSON APP CON 066°-274° <b>119.4 318.1</b> 275°-065° <b>125.1 269.55</b>	TOWER <b>118.85 253.5</b>	GND CON <b>121.8 275.8</b>	CLNC DEL <b>121.8 275.8</b>
-----------------------------	---	------------------------------	-------------------------------	--------------------------------



EMERG SAFE ALT 100 NM 17,000

	SHORR DMA (2) 11,000	FIVIL DMA (14) 6600	NEBNE DMA (7.3) 4600	DMA (3.1) ESALD DMA (2)	DMA TACAN	8000 DMA R-123	ACINI DMA (25)	ELEV 2704	TDZE 2615
CATEGORY	C		D		E				
S-13	3160-1½		545 (500-1½)						
CIRCLING*	3280-1½ 576 (600-1½)		3420-2¼ 716 (800-2¼)		3460-2¾ 756 (800-2¾)		HIRL Rwy 13-31 REIL Rwy 13		

TUCSON, ARIZONA      32°10'N-110°53'W      DAVIS-MONTHAN AFB (KDMA)

# HI-TACAN Z RWY 13

SW-4, 20 MAR 2025 to 17 APR 2025

SW-4, 20 MAR 2025 to 17 APR 2025