

LOC/DME I-TUS <b>111.7</b> Chan <b>54</b>	APP CRS <b>126°</b>	Rwy Idg <b>10996</b> TDZE <b>2599</b> Apt Elev <b>2643</b>
---	------------------------	--

# ILS or LOC RWY 12

TUCSON INTL (TUS)

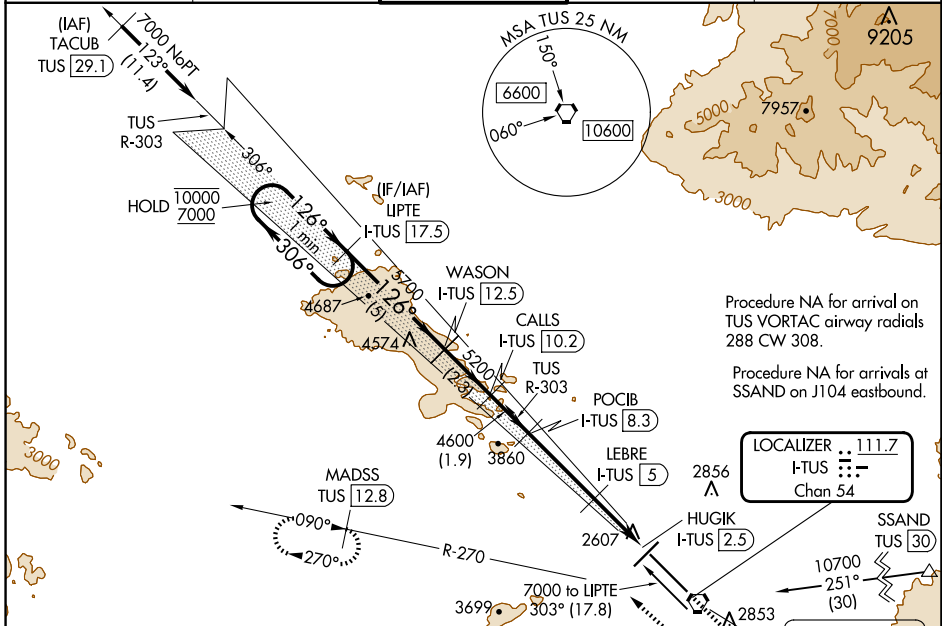
RADAR or DME required. RADAR required for procedure entry at TACUB.



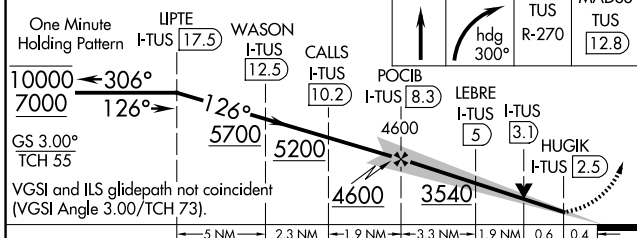
MISSED APPROACH: Climb to 4000 then climbing right turn to 6000 on heading 300° and on TUS VORTAC R-270 to MADSS/TUS 12.8 DME and hold, continue climb in-hold to 6000.

**▼** For inop ALS, increase S-ILS 12 Cat E visibility to RVR 4000,  
**▲** S-LOC 12 Cat E visibility to 2 ½ SM; LEBRE fix minimums: S-LOC 12 Cat C/D/E visibility to RVR 5500.  
\*RVR 1800 authorized with use of FD or AP or HUD to DA.

ATIS <b>123.8 279.65</b>	TUCSON APP CON <b>119.4 318.1</b>	TUCSON TOWER <b>118.3 257.8</b>	GND CON <b>120.025 348.6</b>	CLNC DEL <b>126.65 326.2</b>
-----------------------------	--------------------------------------	------------------------------------	---------------------------------	---------------------------------

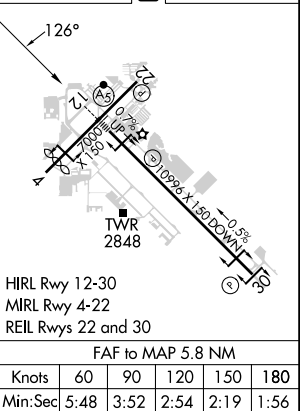


Use I-TUS DME when on the localizer course.



CATEGORY	A	B	C	D	E
S-ILS 12*	2799/24 200 (200-½)				
S-LOC 12	3540/40	941 (1000-¾)	3540-2 941 (1000-2)		
CIRCLING	3540-1¼	897 (900-1¼)	3540-2¾	3640-3	3900-3
			897 (900-2¾)	997 (1000-3)	1257 (1300-3)
LEBRE FIX MINIMUMS					
S-LOC 12	2960/24	361 (400-½)	2960/35	361 (400-¾)	
CIRCLING	3160-1	3220-1	3220-½	3640-3	3900-3
	517 (600-1)	577 (600-1)	577 (600-½)	997 (1000-3)	1257 (1300-3)

ELEV 2643 **D** TDZE 2599



SW-4, 20 MAR 2025 to 17 APR 2025

SW-4, 20 MAR 2025 to 17 APR 2025