

APP CRS	Rwy Idg	<b>6000</b>
<b>216°</b>	TDZE	<b>2572</b>
	Apt Elev	<b>2643</b>

# RNAV (GPS) RWY 22

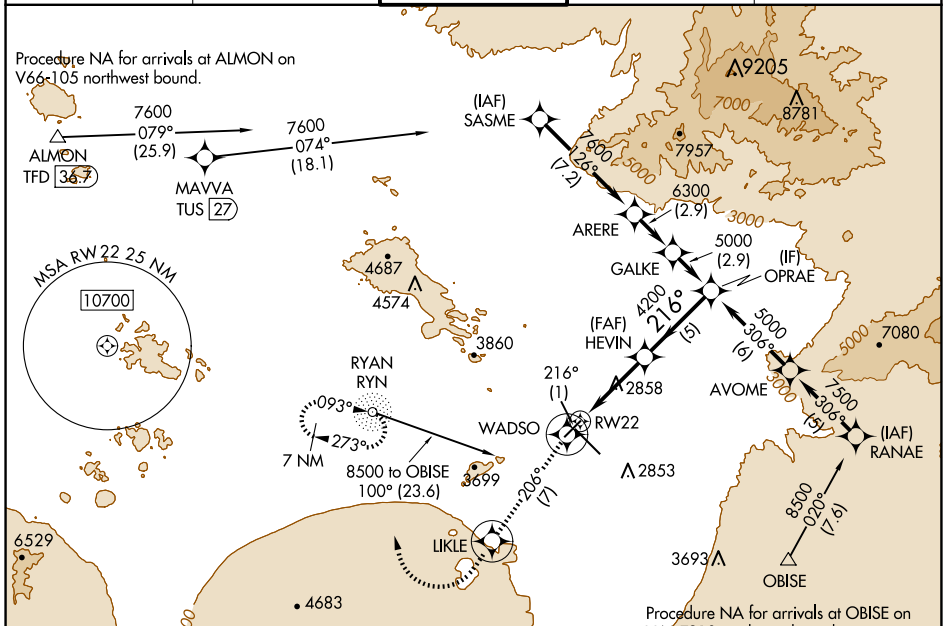
TUCSON INTL (TUS)

RNP APCH - GPS.

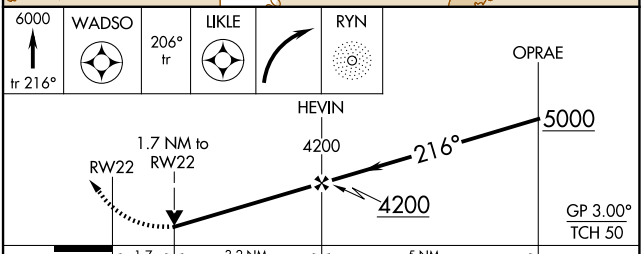
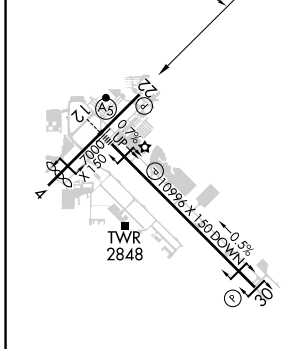
**▼** Rwy 22 helicopter visibility reduction below 3/4 SM NA.  
**▲** For uncompensated Baro-VNAV systems, LNAV/VNAV NA below -2°C or above 54°C.

MISSED APPROACH: Climb to 6000 on track 216° to WADSO and 206° track to LIKLE and right turn direct RYN NDB and hold, continue climb-in-hold to 6000.

ATIS <b>123.8 279.65</b>	TUCSON APP CON <b>119.4 318.1</b>	<b>TUCSON TOWER</b> <b>118.3 257.8</b>	GND CON <b>120.025 348.6</b>	CLNC DEL <b>126.65 326.2</b>
-----------------------------	--------------------------------------	---	---------------------------------	---------------------------------



ELEV 2643	<b>D</b>	TDZE 2572
-----------	----------	-----------



CATEGORY	A	B	C	D
LNAV/VNAV	DA	3145-2		573 (600-2)
LNAV MDA	3160-1	588 (600-1)	3160-1 3/4	588 (600-1 3/4)
CIRCLING	3160-1 517 (600-1)	3220-1 577 (600-1)	3220-1 3/4 577 (600-1 3/4)	3660-3 1017 (1100-3)

HIRL Rwy 12-30  
 MIRL Rwy 4-22  
 REIL Rwy 22 and 30

SW-4, 20 MAR 2025 to 17 APR 2025

SW-4, 20 MAR 2025 to 17 APR 2025