

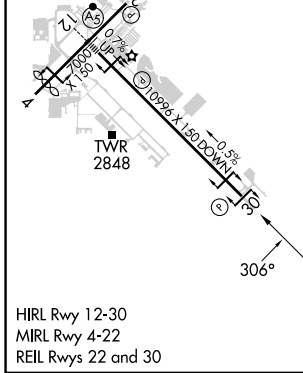
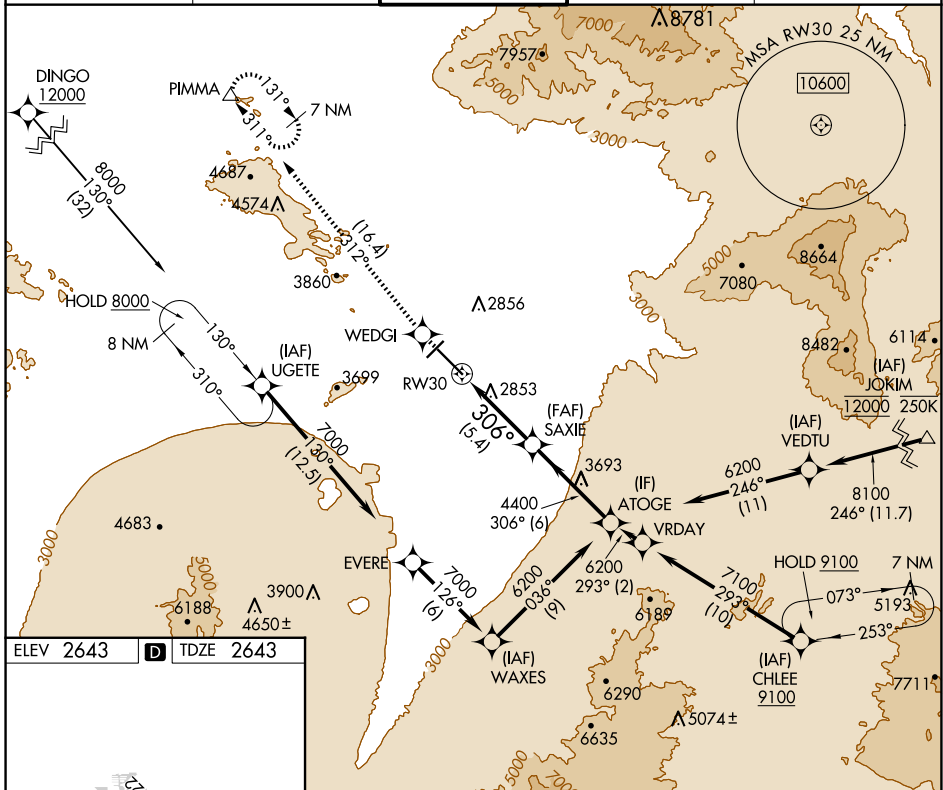
APP CRS 306°	Rwy Idg TDZE Apt Elev	10996 2643 2643
------------------------	-----------------------------	--

RNAV (RNP) Y RWY 30

TUCSON INTL (TUS)

RNP AR APCH - GPS.	MISSED APPROACH: Climb to 6800 direct WEDGI and on track 312° to PIMMA and hold.
--------------------	--

ATIS 123.8 279.65	TUCSON APP CON 119.4 318.1	TUCSON TOWER 118.3 257.8	GND CON 120.025 348.6	CLNC DEL 126.65 326.2
-----------------------------	--------------------------------------	------------------------------------	---------------------------------	---------------------------------



6800	WEDGI	PIMMA	VGSi and RNAV glidepath not coincident (VGSi Angle 3.00/TCH 81).	
↑	✦	tr 312°	SAXIE	ATOGE
			4400	6200
			5.4 NM	6 NM
CATEGORY	A	B	C	D
RNP 0.30 DA	3062-1½ 419 (500-1½)			
AUTHORIZATION REQUIRED				

SW-4, 20 MAR 2025 to 17 APR 2025

SW-4, 20 MAR 2025 to 17 APR 2025