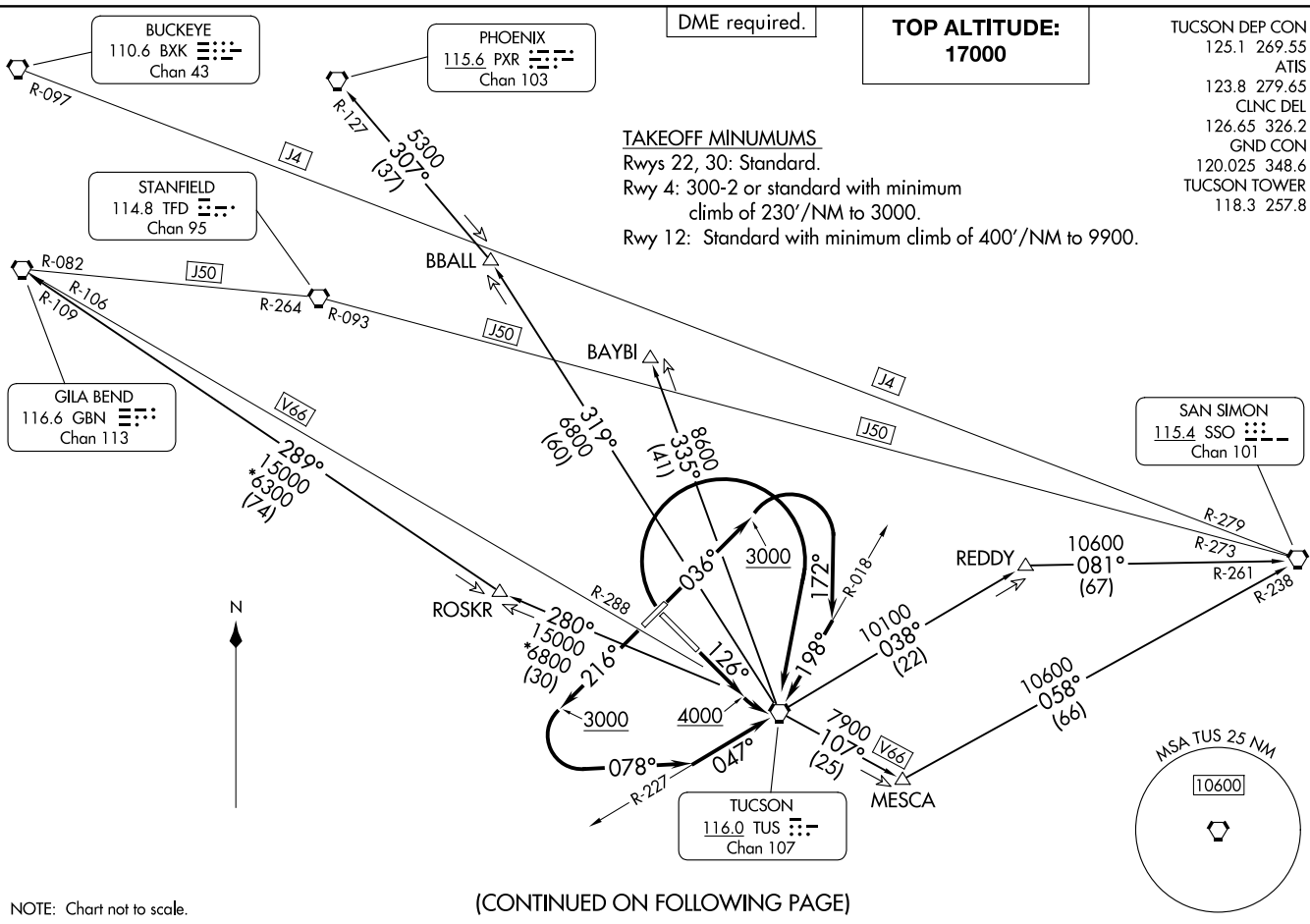


TUCSON NINE DEPARTURE  
(TUS9.TUS) 30NOV23

TUCSON, ARIZONA  
TUCSON INTL (TUS)



(CONTINUED ON FOLLOWING PAGE)

(TUS9.TUS) 24081  
TUCSON NINE DEPARTURE

AL-430 (FAA)

TUCSON INTL (TUS)  
TUCSON, ARIZONA

TUCSON DEP CON 125.1 269.55  
 ATIS 123.8 279.65  
 CLNC DEL 126.65 326.2  
 GND CON 120.025 348.6  
 TUCSON TOWER 118.3 257.8

SAN SIMON  
 115.4 SSO  
 Chan 101

DME required.

TOP ALTITUDE:  
 17000

TAKEOFF MINIMUMS  
 Rwys 22, 30: Standard.  
 Rwy 4: 300-2 or standard with minimum  
 climb of 230'/NM to 3000.  
 Rwy 12: Standard with minimum climb of 400'/NM to 9900.

MSA TUS 25 NM  
 10600

NOTE: Chart not to scale.



DEPARTURE ROUTE DESCRIPTION

TAKEOFF RUNWAY 4: Climb on heading 036° to 3000 then climbing right turn on heading 172° and TUS R-018 to TUS VORTAC, thence . . . .

TAKEOFF RUNWAY 12: Climb on heading 126° to 4000 then climbing left turn direct TUS VORTAC, thence . . . .

TAKEOFF RUNWAY 22 : Climb on heading 216° to 3000 then climbing left turn on heading 078° and TUS VORTAC R-227 to TUS VORTAC, thence . . . .

TAKEOFF RUNWAY 30: Climbing right turn direct TUS VORTAC. Thence . . . .

. . . . maintain 17000, expect clearance to filed altitude 10 minutes after departure.

BAYBI TRANSITION (TUS9.BAYBI): From over TUS VORTAC on TUS R-335 to BAYBI.

BBALL TRANSITION (TUS9.BBALL): From over TUS VORTAC on TUS R-319 to BBALL.

GILA BEND TRANSITION (TUS9.GBN): From over TUS VORTAC on TUS R-280 and GBN R-109 to GBN VORTAC.

MESCA TRANSITION (TUS9.MESCA): From over TUS VORTAC on TUS R-107 and SSO R-238 to SSO VORTAC.

PHOENIX TRANSITION (TUS9.PXR): From over TUS VORTAC on TUS R-319 and PXR R-127 to PXR VORTAC.

REDDY TRANSITION (TUS9.REDDY): From over TUS VORTAC on TUS R-038 and SSO R-261 to SSO VORTAC.

SW-4, 20 MAR 2025 to 17 APR 2025

SW-4, 20 MAR 2025 to 17 APR 2025