

VORTAC TUS <b>116.0</b> Chan <b>107</b>	APP CRS <b>123°</b>	Rwy ldg <b>10996</b> TDZE <b>2599</b> Apt Elev <b>2643</b>
---	------------------------	--

# VOR or TACAN RWY 12

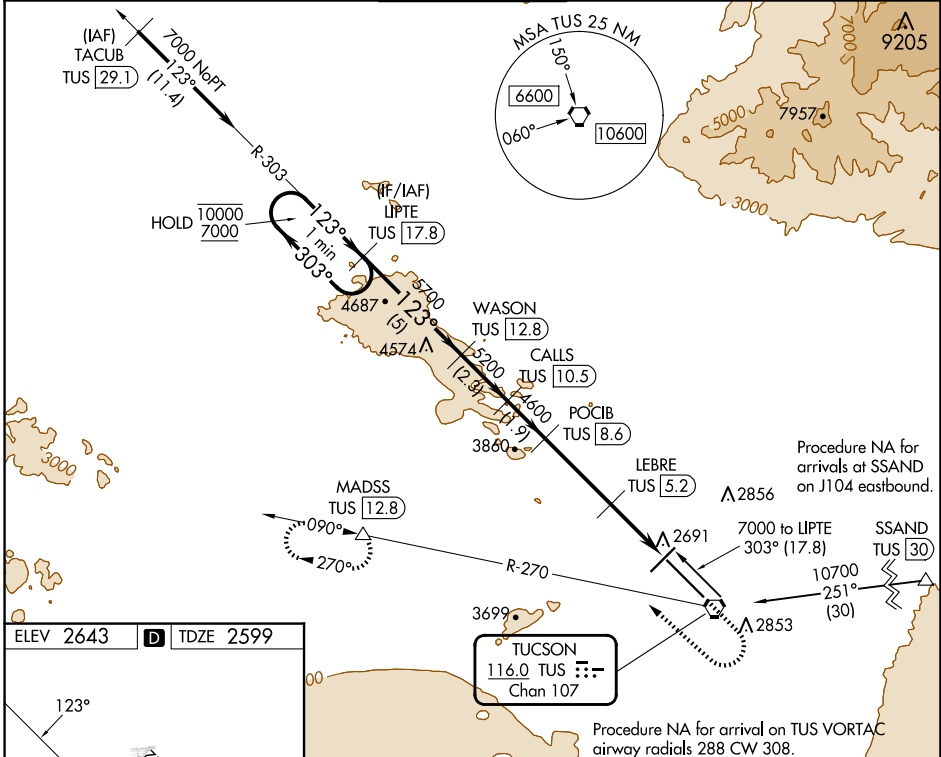
TUCSON INTL (TUS)

DME required. RADAR required for procedure entry at TACUB.

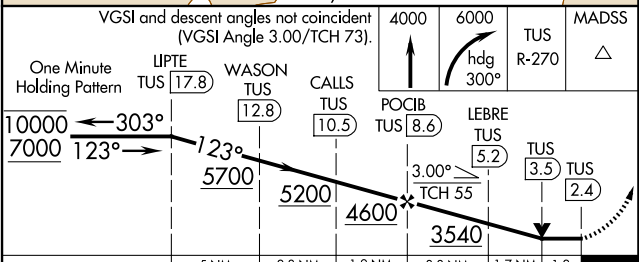
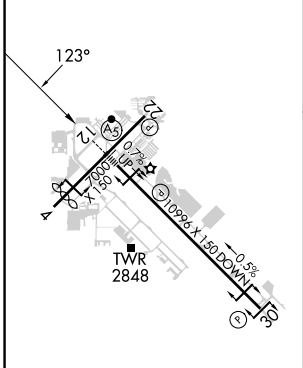
**MALSR**  
MISSED APPROACH: Climb to 4000 then climbing right turn to 6000 on heading 300° and TUS VORTAC R-270 to MADSS/TUS 12.8 DME and hold, continue climb in hold to 6000.

**⚠** For inop ALS, increase Cat E visibility to 1¼ SM.

ATIS <b>123.8 279.65</b>	TUCSON APP CON <b>119.4 318.1</b>	TUCSON TOWER <b>118.3 257.8</b>	GND CON <b>120.025 348.6</b>	CLNC DEL <b>126.65 326.2</b>
-----------------------------	--------------------------------------	------------------------------------	---------------------------------	---------------------------------



ELEV 2643	<b>D</b>	TDZE 2599
-----------	----------	-----------



CATEGORY	A	B	C	D	E
S-12	3020/24	421 (400-½)	3020/40	421 (400-¾)	
CIRCLING	3160-1 517 (600-1)	3180-1 537 (600-1)	3200-1½ 557 (600-1½)	3660-3 1017(1100-3)	3920-3 1277(1300-3)

TUCSON, ARIZONA  
Orig 30NOV23

32°07'N-110°56'W

# VOR or TACAN RWY 12

SW-4, 20 MAR 2025 to 17 APR 2025

SW-4, 20 MAR 2025 to 17 APR 2025