

WAAS CH <b>69614</b> <b>W18B</b>	APP CRS <b>180°</b>	Rwy Idg <b>5141</b> TDZE <b>668</b> Apt Elev <b>678</b>
--	------------------------	---

# RNAV (GPS) RWY 18R

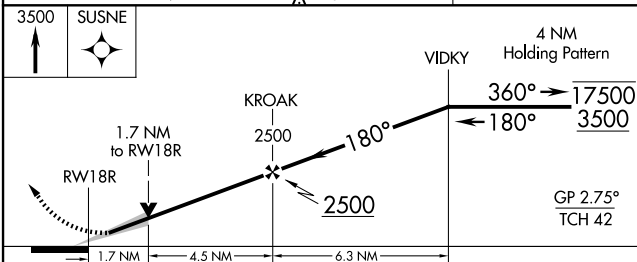
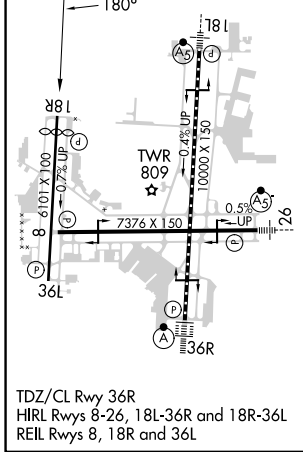
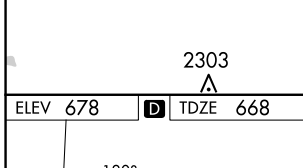
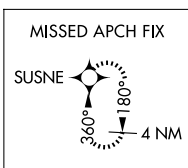
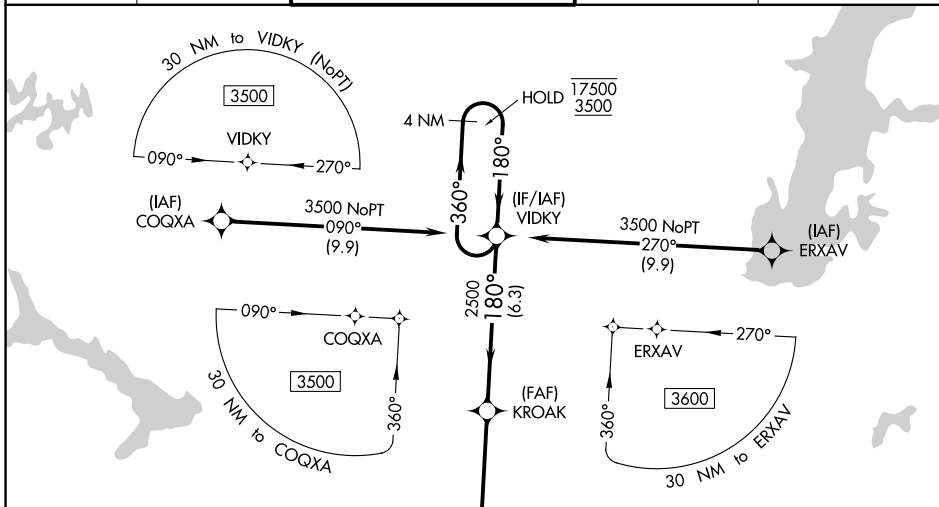
TULSA INTL (TUL)

RNP APCH - GPS.

**⚠** Circling NA for Cat E south of Rwy 8-26. Use of FD or AP required during simultaneous operations.  
**⚠** For uncompleted Baro-VNAV systems, LNAV/VNAV NA below -8°C or above 54°C.  
**ASR** Simultaneous approach authorized. LNAV procedure NA during simultaneous operations.

**MISSED APPROACH:**  
 Climb to 3500 direct  
 SUSNE and hold.

D-ATIS <b>124.9 377.2</b>	TULSA APP CON <b>124.0 338.3</b>	TULSA TOWER <b>121.2 310.8</b> (Rwys 18L-36R, 8-26) <b>118.7 257.8</b> (Rwy 18R-36L)	GND CON <b>121.9 348.6</b>	CLNC DEL <b>134.05 284.7</b>
------------------------------	-------------------------------------	--	-------------------------------	---------------------------------



CATEGORY	A	B	C	D	E
LPV DA	868- <sup>3</sup> / <sub>4</sub>		200 (200- <sup>3</sup> / <sub>4</sub> )		
LNAV/VNAV DA	954- <sup>7</sup> / <sub>8</sub>		286 (300- <sup>7</sup> / <sub>8</sub> )		
LNAV MDA	1180-1	512 (600-1)	1180- <sup>1</sup> / <sub>3</sub>	512 (600-1 <sup>3</sup> / <sub>8</sub> )	
<b>C</b> CIRCLING	1180-1	502 (600-1)	1500-2 <sup>1</sup> / <sub>2</sub> 822 (900-2 <sup>1</sup> / <sub>2</sub> )	1520-2 <sup>3</sup> / <sub>4</sub> 842 (900-2 <sup>3</sup> / <sub>4</sub> )	1520-3 842 (900-3)

SC-1, 20 MAR 2025 to 17 APR 2025

SC-1, 20 MAR 2025 to 17 APR 2025