

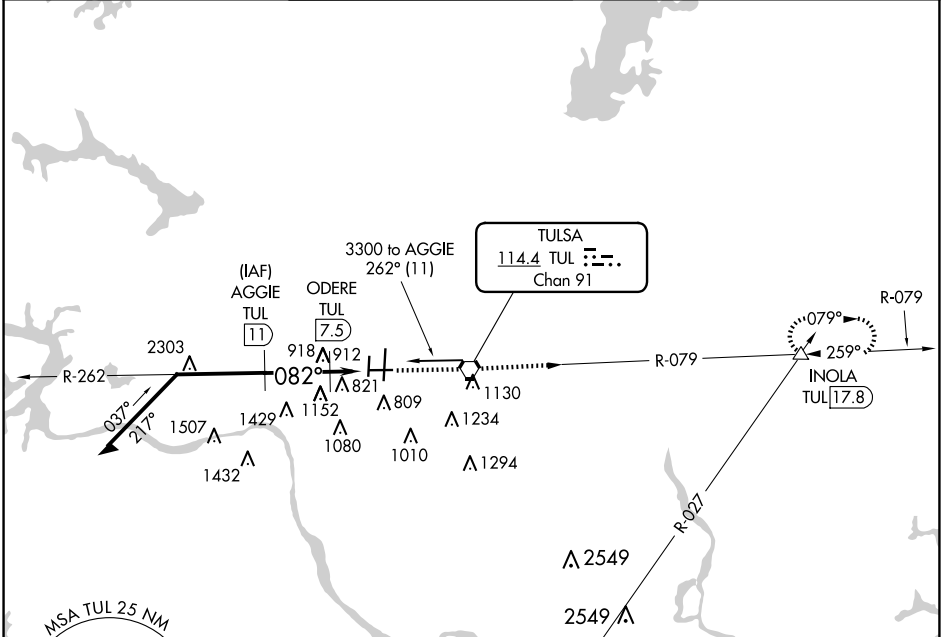
VORTAC TUL <b>114.4</b> Chan 91	APP CRS <b>082°</b>	Rwy Idg TDZE Apt Elev	<b>7376</b> <b>671</b> <b>678</b>
---------------------------------------	------------------------	-----------------------------	---

# VOR/DME RWY 8 TULSA INTL (TUL)

**ASR** Circling NA for Cat E south of Rwy 8-26.  
Helicopter visibility reduction below 3/4 SM NA.  
Autopilot coupled approach NA.

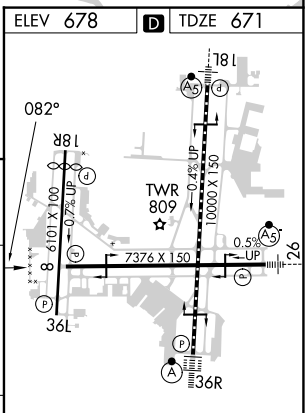
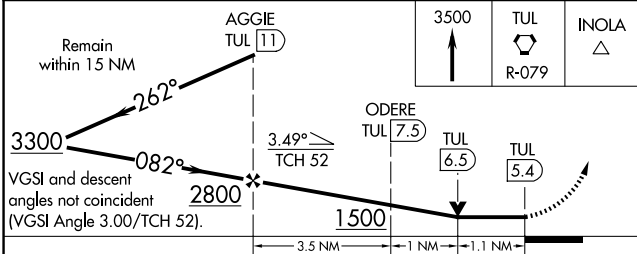
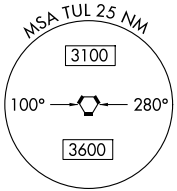
MISSED APPROACH: Climb to 3500 direct TUL VORTAC then via TUL R-079 to INOLA INT/TUL 17.8 DME and hold.

D-ATIS <b>124.9 377.2</b>	TULSA APP CON <b>124.0 338.3</b>	TULSA TOWER <b>121.2 310.8</b> (Rwys 18L-36R, 8-26) <b>118.7 257.8</b> (Rwy 18R-36L)	GND CON <b>121.9 348.6</b>	CLNC DEL <b>134.05 284.7</b>
------------------------------	-------------------------------------	--	-------------------------------	---------------------------------



SC-1, 20 MAR 2025 to 17 APR 2025

SC-1, 20 MAR 2025 to 17 APR 2025



CATEGORY	A	B	C	D	E
S-8	1080-1	409 (500-1)	1080-1 1/4 409 (500-1 1/4)		1080-1 1/2 409 (500-1 1/2)
<b>CIRCLING</b>	1120-1 442 (500-1)	1160-1 482 (500-1)	1520-2 1/2 842 (900-2 1/2)	1520-2 3/4 842 (900-2 3/4)	1520-3 842 (900-3)

TDZ/CL Rwy 36R  
HIRL Rwys 8-26, 18L-36R and 18R-36L  
REIL Rwys 8, 18R and 36L