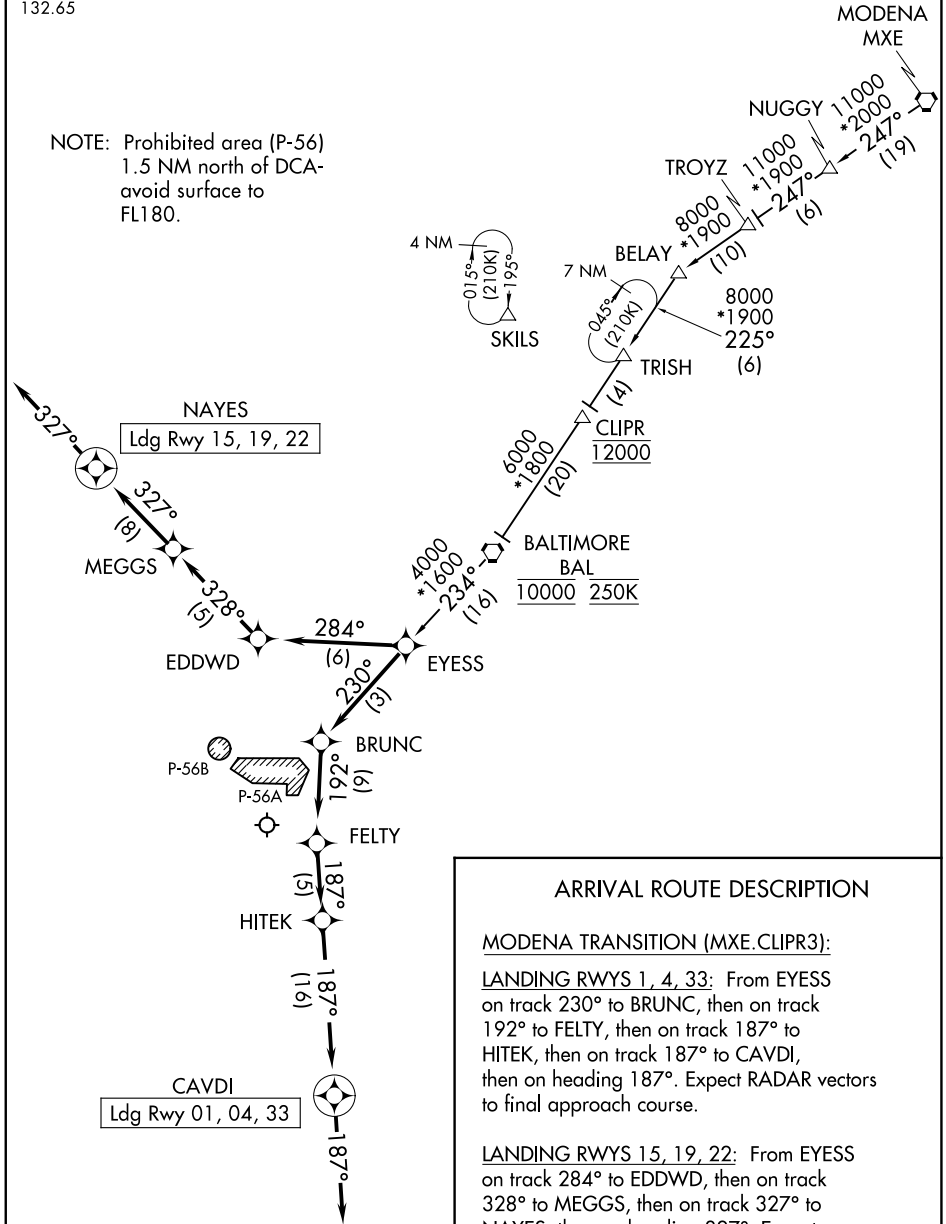


POTOMAC APP CON  
128.7 307.9  
D-ATIS  
132.65

RNAV 1 - DME/DME/IRU or GPS.

RADAR required.

NOTE: Prohibited area (P-56)  
1.5 NM north of DCA-  
avoid surface to  
FL180.



NE-3, 20 MAR 2025 to 17 APR 2025

NE-3, 20 MAR 2025 to 17 APR 2025

ARRIVAL ROUTE DESCRIPTION

MODENA TRANSITION (MXE.CLIPR3):

LANDING RWYS 1, 4, 33: From EYESS on track 230° to BRUNC, then on track 192° to FELTY, then on track 187° to HITEK, then on heading 187°. Expect RADAR vectors to final approach course.

LANDING RWYS 15, 19, 22: From EYESS on track 284° to EDDWD, then on track 328° to MEGGS, then on track 327° to NAYES, then on heading 327°. Expect RADAR vectors to final approach course.

NOTE: Chart not to scale.