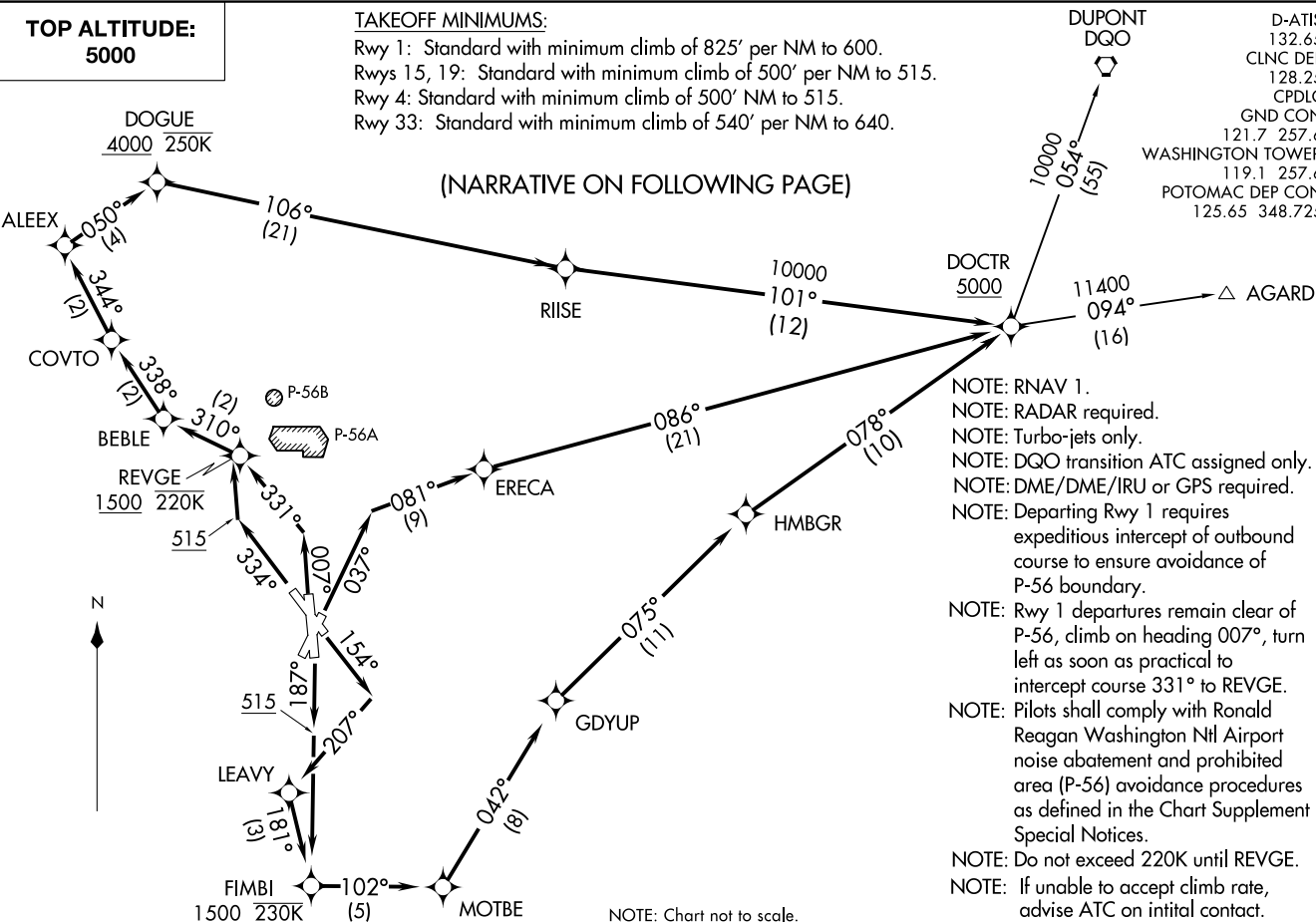


TAKEOFF MINIMUMS:

Rwy 1: Standard with minimum climb of 825' per NM to 600.
Rwys 15, 19: Standard with minimum climb of 500' per NM to 515.
Rwy 4: Standard with minimum climb of 500' NM to 515.
Rwy 33: Standard with minimum climb of 540' per NM to 640.

**TOP ALTITUDE:
5000**

(NARRATIVE ON FOLLOWING PAGE)



D-ATIS 132.65
 CLNC DEL 128.25
 CPDLC
 GND CON 121.7 257.6
 WASHINGTON TOWER 119.1 257.6
 POTOMAC DEP CON 125.65 348.725

- NOTE: RNAV 1.
- NOTE: RADAR required.
- NOTE: Turbo-jets only.
- NOTE: DQO transition ATC assigned only.
- NOTE: DME/DME/IRU or GPS required.
- NOTE: Departing Rwy 1 requires expeditious intercept of outbound course to ensure avoidance of P-56 boundary.
- NOTE: Rwy 1 departures remain clear of P-56, climb on heading 007°, turn left as soon as practical to intercept course 331° to REVGE.
- NOTE: Pilots shall comply with Ronald Reagan Washington Ntl Airport noise abatement and prohibited area (P-56) avoidance procedures as defined in the Chart Supplement Special Notices.
- NOTE: Do not exceed 220K until REVGE.
- NOTE: If unable to accept climb rate, advise ATC on initial contact.

NOTE: Chart not to scale.

DOCTR FIVE DEPARTURE (RNAV)
(DOCTR5.DOCR) 31 DECGO

WASHINGTON DC
RONALD REAGAN WASHINGTON NTL (DCA)

(DOCTR5.DOCR) 21112
DOCTR FIVE DEPARTURE (RNAV)
AL-43 (FAA)

WASHINGTON DC
RONALD REAGAN WASHINGTON NTL (DCA)



DEPARTURE ROUTE DESCRIPTION

TAKEOFF RUNWAY 1: Climb on heading 007° to intercept course 331° to REVGE, cross REVGE at or above 1500 and at or below 220K, then on track 310° to BEBLE, then on track 338° to COVTO, then on track 344 to ALEEX, then on track 050° to DOGUE, cross DOGUE at or above 4000 and at or below 250K, then on track 106° to RIISE, then on track 101° to DOCTR, cross DOCTR at or above 5000, thence....

TAKEOFF RUNWAY 4: Climb on heading 037° to intercept course 081° to ERECA, then on track 086° to DOCTR, cross DOCTR at or above 5000, thence....

TAKEOFF RUNWAY 15: Climb on heading 154° to intercept course 207° to LEAVY, then on track 181° to FIMBI, cross FIMBI at or above 1500 and at or below 230K, then on track 102° to MOTBE, then on track 042° to GDYUP, then on track 075° to HMBGR, then on track 078° to DOCTR, cross DOCTR at or above 5000, thence....

TAKEOFF RUNWAY 19: Climb on heading 187° to 515, then direct FIMBI, cross FIMBI at or above 1500 and at or below 230 K, then on track 102° to MOTBE, then on track 042° to GDYUP, then on track 075° to HMBGR, then on track 078° to DOCTR, cross DOCTR at or above 5000, thence....

TAKEOFF RUNWAY 33: Climb on heading 334° to 515, then direct REVGE, cross REVGE at or above 1500 and at or below 220K, then on track 310° to BEBLE, then on track 339° to COVTO, then on track 344° to ALEEX, then on track 050° to DOGUE, cross DOGUE at or above 4000 and at or below 250K, then on track 106° to RIISE, then on track 101° to DOCTR, cross DOCTR at or above 5000, thence....

....on assigned transition. Maintain 5000. Expect clearance to filed altitude within ten (10) minutes after departure.

AGARD TRANSITION (DOCTR5.AGARD)

DUPONT TRANSITION (DOCTR5.DQO)

NE-3, 20 MAR 2025 to 17 APR 2025

NE-3, 20 MAR 2025 to 17 APR 2025