

HORTO FOUR DEPARTURE (RNAV) AL-443 (FAA)

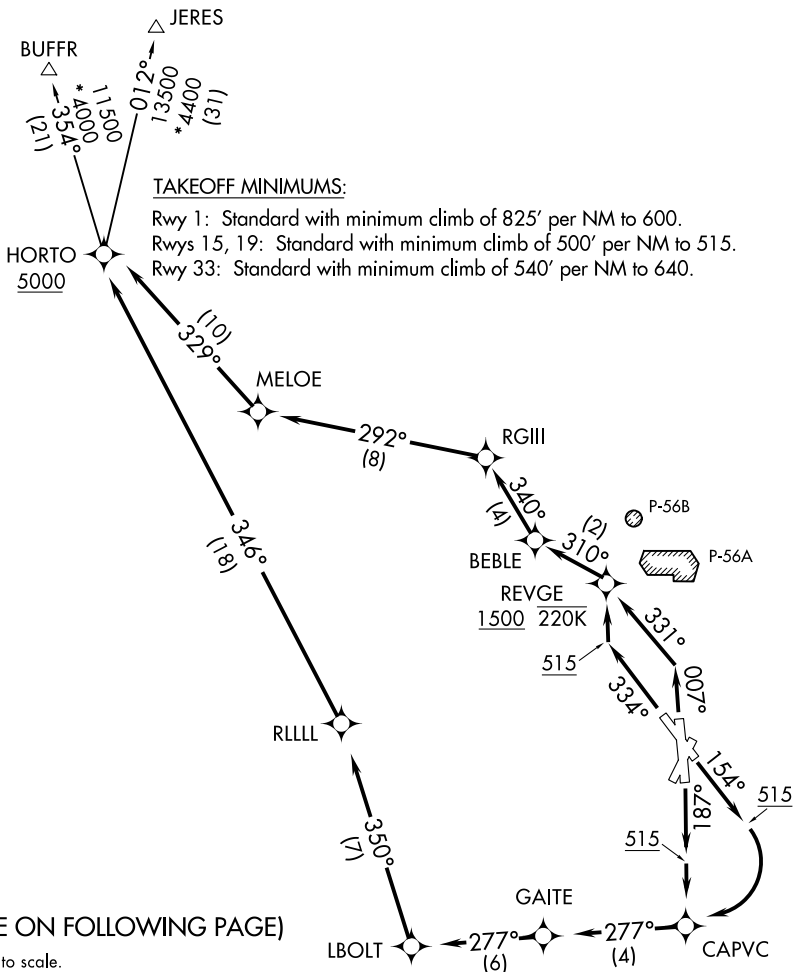
**TOP ALTITUDE:
5000**

D-ATIS
132.65
CLNC DEL
128.25
CPDLC
GND CON
121.7 257.6
WASHINGTON TOWER
119.1 257.6
POTOMAC DEP CON
118.95 257.2

- NOTE: RNAV 1.
- NOTE: RADAR required.
- NOTE: Turbo-jets only.
- NOTE: DME/DME/IRU or GPS required.
- NOTE: Departing Rwy 1 requires expeditious intercept of outbound course to ensure avoidance of P-56 boundary.
- NOTE: Rwy 1 departures remain clear of P-56, climb on heading 006°, turn left as soon as practical to intercept course 331° to REVGE.
- NOTE: Pilots shall comply with Ronald Reagan Washington Ntl Airport noise abatement and prohibited area (P-56) avoidance procedures as defined in the Chart Supplement special notices.
- NOTE: If unable to accept climb rate, advise ATC on initial contact.

TAKEOFF MINIMUMS:

- Rwy 1: Standard with minimum climb of 825' per NM to 600.
- Rwys 15, 19: Standard with minimum climb of 500' per NM to 515.
- Rwy 33: Standard with minimum climb of 540' per NM to 640.



(NARRATIVE ON FOLLOWING PAGE)

NOTE: Chart not to scale.

NE-3, 20 MAR 2025 to 17 APR 2025

NE-3, 20 MAR 2025 to 17 APR 2025



DEPARTURE ROUTE DESCRIPTION

TAKEOFF RUNWAY 1: Climb on heading 007° to intercept course 331° to REVGE, cross REVGE at or above 1500 and at or below 220K, then on track 310° to BEBLE, then on track 340° to RGIII, then on track 292° to MELOE, then on track 329° to HORTO, cross HORTO at or above 5000, thence....

TAKEOFF RUNWAY 15: Climb on heading 154° to 515, then right turn direct CAPVC, then on track 277° to GAITE, then on track 277° to LBOLT, then on track 350° to RLLLL, then on track 346° to HORTO, cross HORTO at or above 5000, thence....

TAKEOFF RUNWAY 19: Climb on heading 187° to 515, then direct CAPVC, then on track 277° to GAITE, then on track 277° to LBOLT, then on track 350° to RLLLL, then on track 346° to HORTO, cross HORTO at or above 5000, thence....

TAKEOFF RUNWAY 33: Climb on heading 334° to 515, then direct REVGE, cross REVGE at or above 1500 and at or below 220K, then on track 310° to BEBLE, then on track 340° to RGIII, then on track 292° to MELOE, then on track 329° to cross HORTO at or above 5000, thence....

...on assigned transition. Maintain 5000. Expect clearance to filed altitude within ten (10) minutes after departure.

BUFR TRANSITION (HORTO4.BUFR):

JERES TRANSITION (HORTO4.JERES):

NE-3, 20 MAR 2025 to 17 APR 2025

NE-3, 20 MAR 2025 to 17 APR 2025